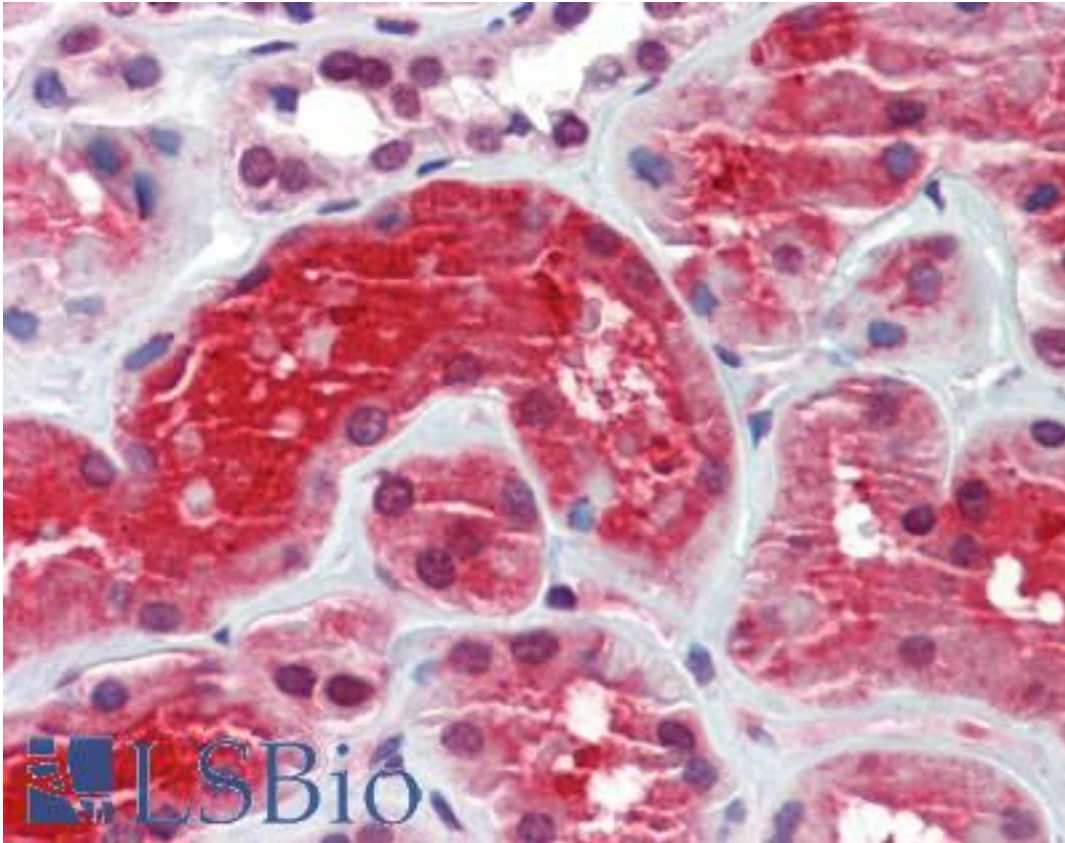


CRYM Mouse anti-Human Monoclonal (1G7) Antibody - LS-B9468 - LSBio

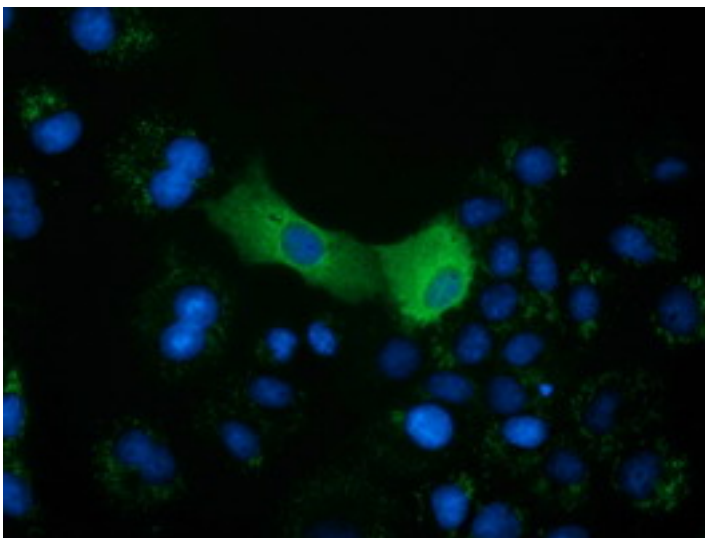
CatalogID:	LS-B9468
Validation:	This antibody replaces catalog number LS-C115457. It has been validated for use in the following assays: IHC-P.
Target:	crystallin, mu (CRYM)
Synonyms:	CRYM Antibody, Crystallin, mu Antibody, Ketimine reductase Antibody, Mu-crystallin homolog Antibody, THBP Antibody, DFNA40 Antibody
Host	CRYM antibody was produced in Mouse
Clonality:	Monoclonal
Isotype:	IgG2b
Clone Name:	1G7
Immunogen Species:	CRYM antibody was raised against Human
Antigen Type:	Recombinant protein
Immunogen:	CRYM antibody was raised against full length human recombinant protein of human CRYM (NP_001879) produced in HEK293T cell.
Specificity:	Human CRYM
Reactivity:	Human, Rat
Purification:	Protein A/G purified
Presentation:	PBS, pH 7.3, 1% BSA, 50% glycerol, 0.02% sodium azide
Recommended Storage:	Store at -20°C. Minimize freezing and thawing.
Usage Summary:	Concentration: 1.00 mg/ml (Lot dependent)
Uses:	IHC - Paraffin (1:150) & (10 µg/ml), Immunofluorescence (1:100), Western blot (1:500 - 1:2000), Flow Cytometry (1:100) (Optimal dilution to be determined by the researcher)
Size:	50 µl
Concentration:	1 mg/ml

Immunohistochemistry Image:



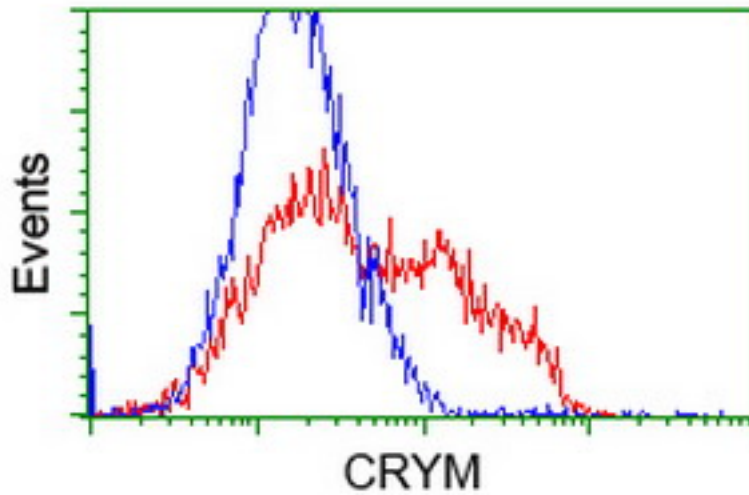
Human Kidney: Formalin-Fixed, Paraffin-Embedded (FFPE)

Immunofluorescence Image:



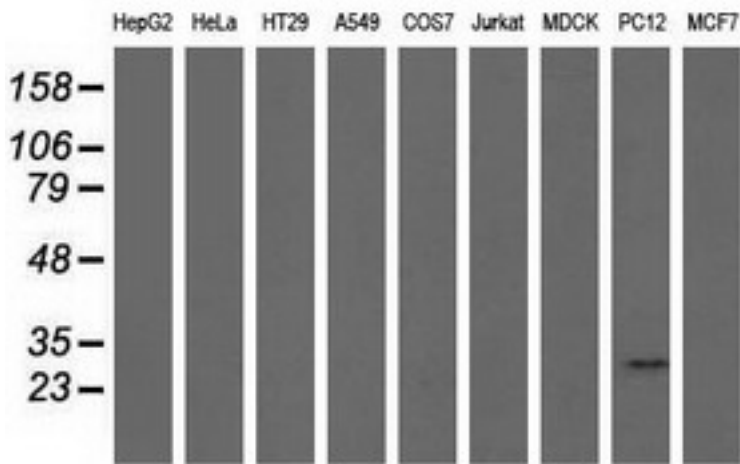
Anti-CRYM mouse monoclonal antibody immunofluorescent staining of COS7 cells transiently transfected by pCMV6-ENTRY CRYM.

Flow Cytometry Image:



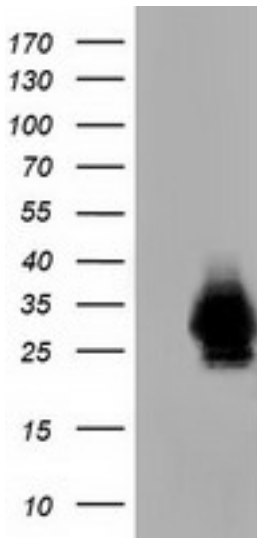
HEK293T cells transfected with either overexpress plasmid (Red) or empty vector control plasmid (Blue) were immunostained by anti-CRYM antibody, and then analyzed by flow cytometry.

Western Blot Image:



Western blot of extracts (35 ug) from 9 different cell lines by using anti-CRYM monoclonal antibody.

Western Blot Image:



HEK293T cells were transfected with the pCMV6-ENTRY control (Left lane) or pCMV6-ENTRY CRYM (Right lane) cDNA for 48 hrs and lysed. Equivalent amounts of cell lysates (5 ug per lane) were separated by SDS-PAGE and immunoblotted with anti-CRYM.

Requested From:

Japan

Laboratory Reagent For In Vitro Research Use Only

Not for resale without prior written consent from LifeSpan BioSciences, Inc.

Created on 9/24/2014

© 2014 LifeSpan BioSciences