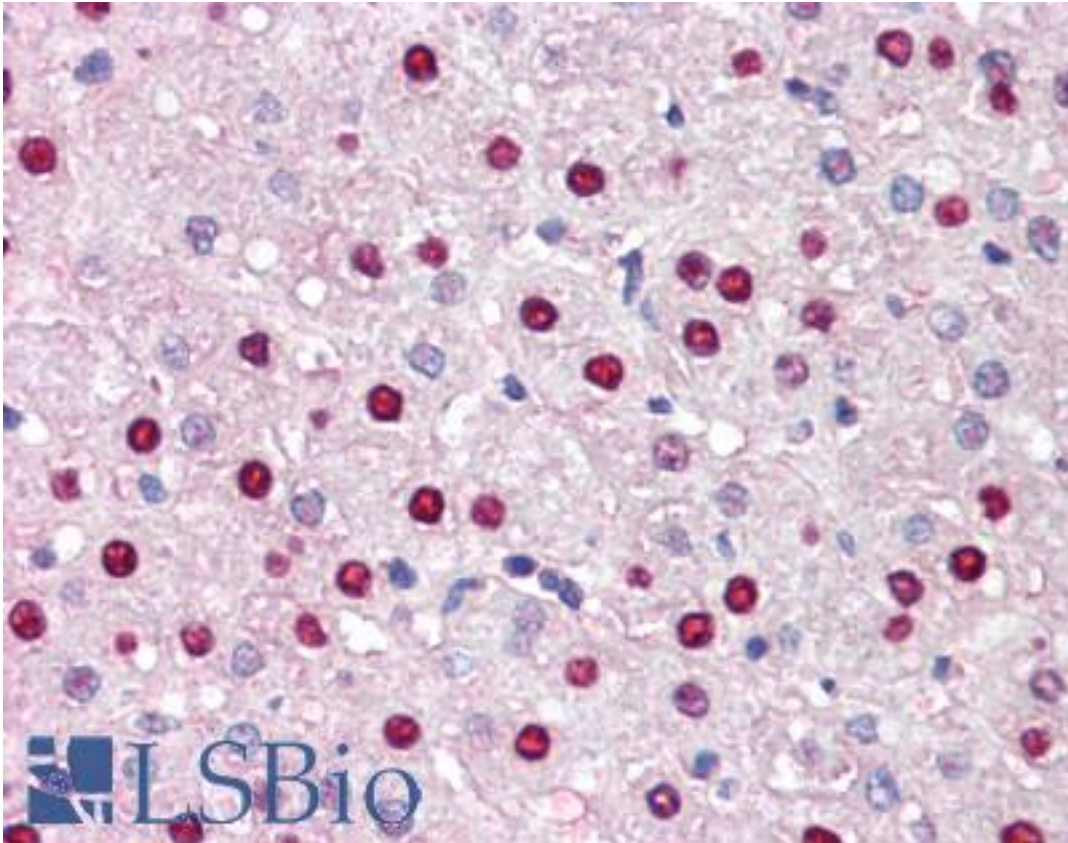


KDM5C / Jarid1C / SMCX Mouse anti-Human Monoclonal (C-Terminus) Antibody - LS-B9465 - LSBio

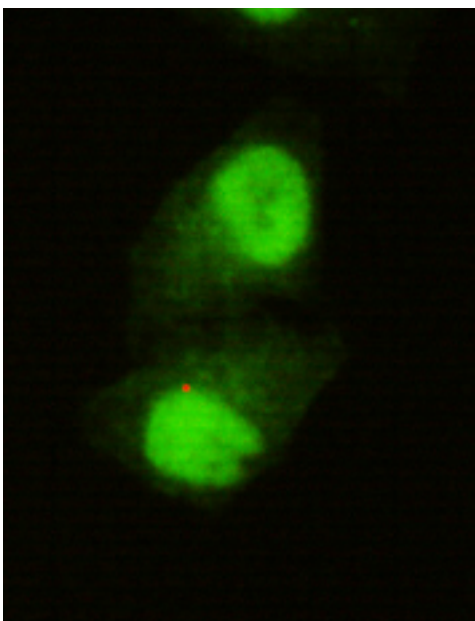
CatalogID:	LS-B9465
Validation:	This antibody replaces catalog number LS-C178329. It has been validated for use in the following assays: IHC-P.
Target:	lysine (K)-specific demethylase 5C (KDM5C)
Synonyms:	KDM5C Antibody, DXS1272E Antibody, MRXJ Antibody, MRXSCJ Antibody, MRXSJ Antibody, Histone demethylase JARID1C Antibody, Protein SmcX Antibody, Protein Xe169 Antibody, SMCX Antibody, Smcy homolog, X-linked Antibody, Smcy homolog, X-linked (mouse) Antibody, Lysine-specific demethylase 5C Antibody, XE169 Antibody, Xe169 protein Antibody, JARID1C Antibody, Selected cDNA on X Antibody, Smcx homolog, X chromosome Antibody
Host	KDM5C antibody was produced in Mouse
Clonality:	Monoclonal
Immunogen Species:	KDM5C / Jarid1C / SMCX antibody was raised against Human
Antigen Type:	Synthetic peptide
Immunogen:	KDM5C / Jarid1C / SMCX antibody was raised against synthetic peptide from C-Terminus of human KDM5C
Specificity:	Human KDM5C
Epitope:	C-Terminus
Reactivity:	Human, Mouse, Rat, Bovine, Dog
Purification:	Affinity purified
Presentation:	0.1M Tris-Glycine, pH 7.4, 150 mM NaCl, 0.2% sodium azide, 50%,glycerol
Recommended Storage:	Store at 4°C short term. Aliquot and store at -20°C long term. Avoid freeze-thaw cycles.
Uses:	IHC - Paraffin (1:50), ICC, Immunofluorescence, Western blot (1:1000) (Optimal dilution to be determined by the researcher)
Size:	50 µl

Immunohistochemistry Image:



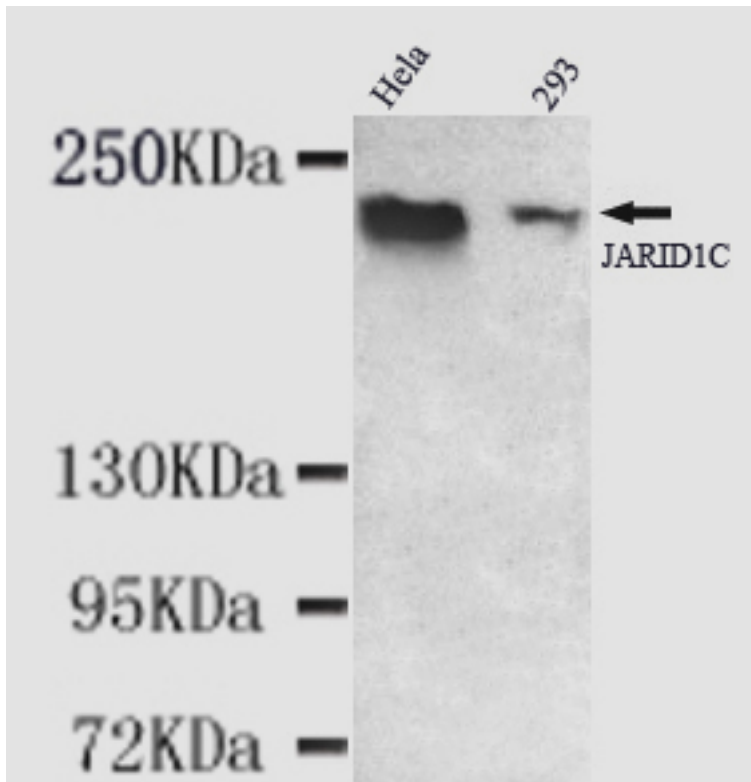
Human Liver: Formalin-Fixed, Paraffin-Embedded (FFPE)

Immunofluorescence Image:



Immunocytochemistry of HeLa cells using anti- KDM5C (C-terminus) antibody diluted 1:150.

Western Blot Image:



JARID1C antibody at 1/1000 dilution Lane1: HeLa whole cell lysate 40 ug/Lane Lane2: 293 whole cell lysate 40 ug/Lane.

Requested From:

Japan

Laboratory Reagent For In Vitro Research Use Only

Not for resale without prior written consent from LifeSpan BioSciences, Inc.

Created on 9/24/2014

© 2014 LifeSpan BioSciences