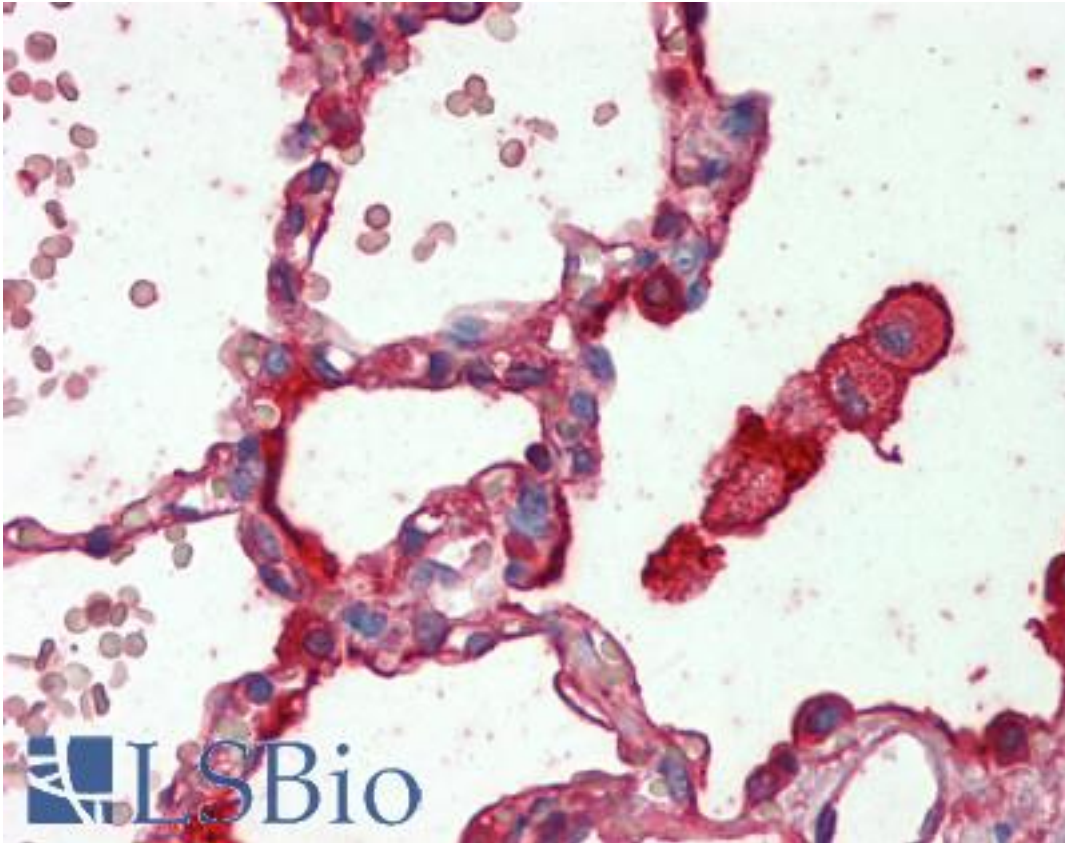


SFTPA1 / Surfactant Protein A Goat anti-Human Polyclonal Antibody - LS-B9459 - LSBio	
CatalogID:	LS-B9459
Validation:	This antibody replaces catalog number LS-C17950. It has been validated for use in the following assays: IHC-P.
Target:	surfactant protein A1 (SFTPA1)
Synonyms:	SFTPA1 Antibody, Alveolar proteinosis protein Antibody, COLEC4 Antibody, Collectin-4 Antibody, PSP-A Antibody, PSPA Antibody, SFTP1 Antibody, SFTPA Antibody, SFTPA1B Antibody, SPA1 Antibody, SP-A Antibody, SP-A1 Antibody, SPA Antibody, Surfactant Protein A Antibody, Surfactant protein A1 Antibody, Surfactant protein A1B Antibody
Host	SFTPA1 antibody was produced in Goat
Clonality:	Polyclonal
Isotype:	IgG
Immunogen Species:	SFTPA1 / Surfactant Protein A antibody was raised against Human
Antigen Type:	Purified protein
Immunogen:	SFTPA1 / Surfactant Protein A antibody was raised against human SP-A from human alveolar proteinosis lavage fluid.
Specificity:	Recognizes human SP-A.
Reactivity:	Human
Purification:	Purified
Presentation:	PBS. No preservatives added.
Recommended Storage:	Short term 4°C, long term aliquot and store at -20°C, avoid freeze thaw cycles. Store undiluted.
Usage Summary:	.
Uses:	IHC - Paraffin (1:200), Western blot (1:000 - 1:5000), ELISA (1:500 - 1:1000) (Optimal dilution to be determined by the researcher)
Size:	50 µl

Immunohistochemistry Image:



Human Lung: Formalin-Fixed, Paraffin-Embedded (FFPE)

Requested From:

Japan

Laboratory Reagent For In Vitro Research Use Only

Not for resale without prior written consent from LifeSpan BioSciences, Inc.

Created on 9/24/2014

© 2014 LifeSpan BioSciences