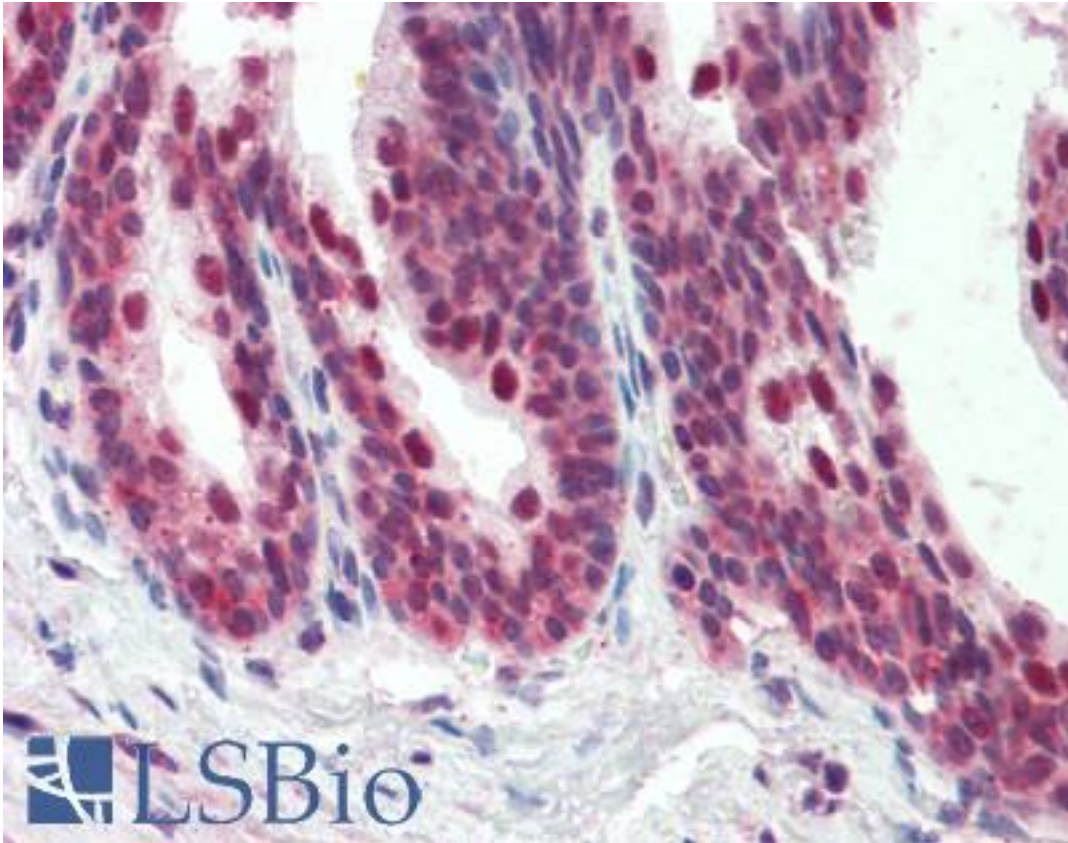


PDCD4 Goat anti-Human Polyclonal (aa210-221) Antibody - LS-B9458 - LSBio

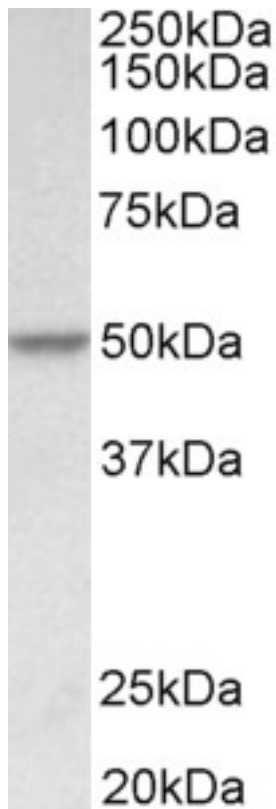
CatalogID:	LS-B9458
Validation:	This antibody replaces catalog number LS-C155029. It has been validated for use in the following assays: IHC-P.
Target:	programmed cell death 4 (neoplastic transformation inhibitor) (PDCD4)
Synonyms:	PDCD4 Antibody, H731 Antibody, Nuclear antigen H731-like Antibody, Nuclear antigen H731 Antibody, Protein 197/15a Antibody
Family / Subfamily:	Apoptosis
Host	PDCD4 antibody was produced in Goat
Clonality:	Polyclonal
Immunogen Species:	PDCD4 antibody was raised against Human
Antigen Type:	Synthetic peptide
Immunogen:	PDCD4 antibody was raised against synthetic peptide C-EGKASHREMTSK from an internal region of human PDCD4 (NP_055271.2; NP_663314.1; NP_001186421.1). Percent identity by BLAST analysis: Human, Chimpanzee, Gorilla, Orangutan, Gibbon, Monkey, Galago, Marmoset, Mouse, Rat, Goat, Hamster, Elephant, Panda, Bovine, Bat, Dog, Horse, Rabbit, Porcine, Opossum, Guinea pig, Turkey, Zebra finch, Chicken, Platypus, Lizard, Xenopus (100%); Medaka, Pufferfish, Zebrafish (83%).
Specificity:	Human PDCD4. This antibody is expected to recognize all reported isoforms (NP_055271.2; NP_663314.1; NP_001186421.1).
Epitope:	aa210-221
Reactivity:	Human, Chimpanzee, Gorilla, Orangutan, Gibbon, Monkey, Mouse, Rat, Bat, Bovine, Dog, Goat, Guinea pig, Hamster, Horse, Rabbit, Chicken, Xenopus
Purification:	Immunoaffinity purified
Presentation:	Tris-buffered saline, pH 7.3, 0.5% BSA, 0.02% sodium azide
Recommended Storage:	Store at -20°C. Minimize freezing and thawing.
Usage Summary:	Peptide ELISA: antibody detection limit dilution 1:128000. Western blot: Approx 50kD band observed in lysates of cell line HeLa (calculated MW of 50.2kD according to NP_001186421.1). Recommended concentration: 0.1-0.3 ug/ml. Tested in IHC-P only with human FFPE samples.
Uses:	IHC - Paraffin (5 µg/ml), Western blot (0.1 - 0.3 µg/ml), ELISA (1:128000) (Optimal dilution to be determined by the researcher)
Size:	50 µg
Concentration:	0.5 mg/ml

Immunohistochemistry Image:



Human Prostate: Formalin-Fixed, Paraffin-Embedded (FFPE)

Western Blot Image:



PDCD4 antibody (0.1 ug/ml) staining of HeLa lysate (35 ug protein in RIPA buffer). Primary incubation was 1 hour. Detected by chemiluminescence.

Requested From:

Japan

Laboratory Reagent For In Vitro Research Use Only

Not for resale without prior written consent from LifeSpan BioSciences, Inc.

Created on 9/24/2014

© 2014 LifeSpan BioSciences