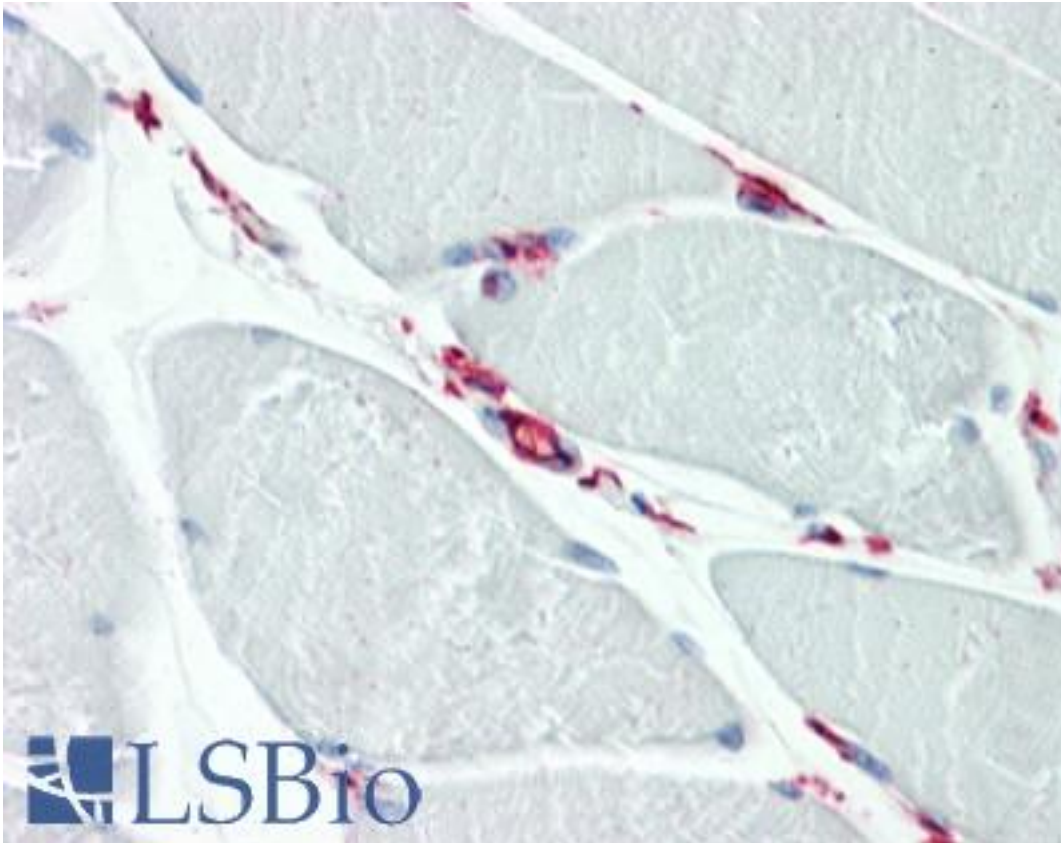


CD34 Rabbit anti-Human Polyclonal (aa366-382) Antibody - LS-B9442 - LSBio

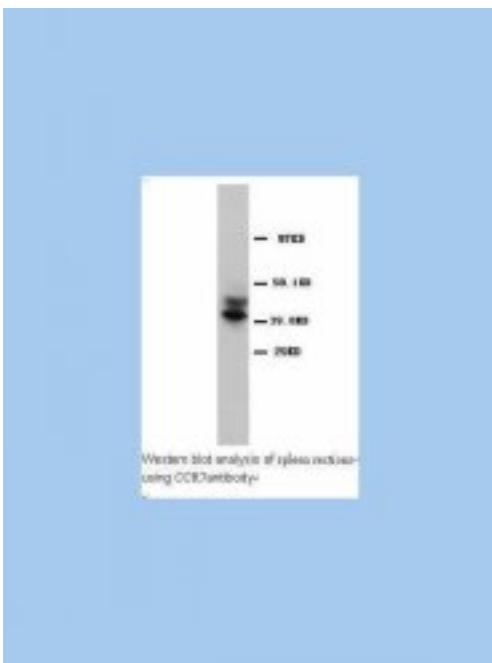
CatalogID:	LS-B9442
Validation:	This antibody replaces catalog number LS-C172156. It has been validated for use in the following assays: IHC-P.
Target:	CD34 molecule
Synonyms:	CD34 Antibody, CD34 molecule Antibody, CD34 antigen Antibody
Host	CD34 antibody was produced in Rabbit
Clonality:	Polyclonal
Immunogen Species:	CD34 antibody was raised against Human
Antigen Type:	Synthetic peptide
Immunogen:	CD34 antibody was raised against synthetic peptide corresponding to a sequence at the N-terminal of human CD34 (366-382 aa), identical to the related mouse and rat sequence.
Specificity:	Human, mouse, rat No cross reactivity with other proteins.
Epitope:	aa366-382
Reactivity:	Human, Mouse, Rat
Purification:	Immunoaffinity purified
Presentation:	PBS, sodium azide.
Recommended Storage:	Short term +4°C; Long term -20°C
Uses:	IHC - Paraffin (5 µg/ml), IHC - Frozen, Western blot (Optimal dilution to be determined by the researcher)
Size:	50 µg
Concentration:	1 mg/ml

Immunohistochemistry Image:



Human Skeletal Muscle: Formalin-Fixed, Paraffin-Embedded (FFPE)

Western Blot Image:



Requested From:

Japan

Laboratory Reagent For In Vitro Research Use Only

Not for resale without prior written consent from LifeSpan BioSciences, Inc.

Created on 9/24/2014

© 2014 LifeSpan BioSciences