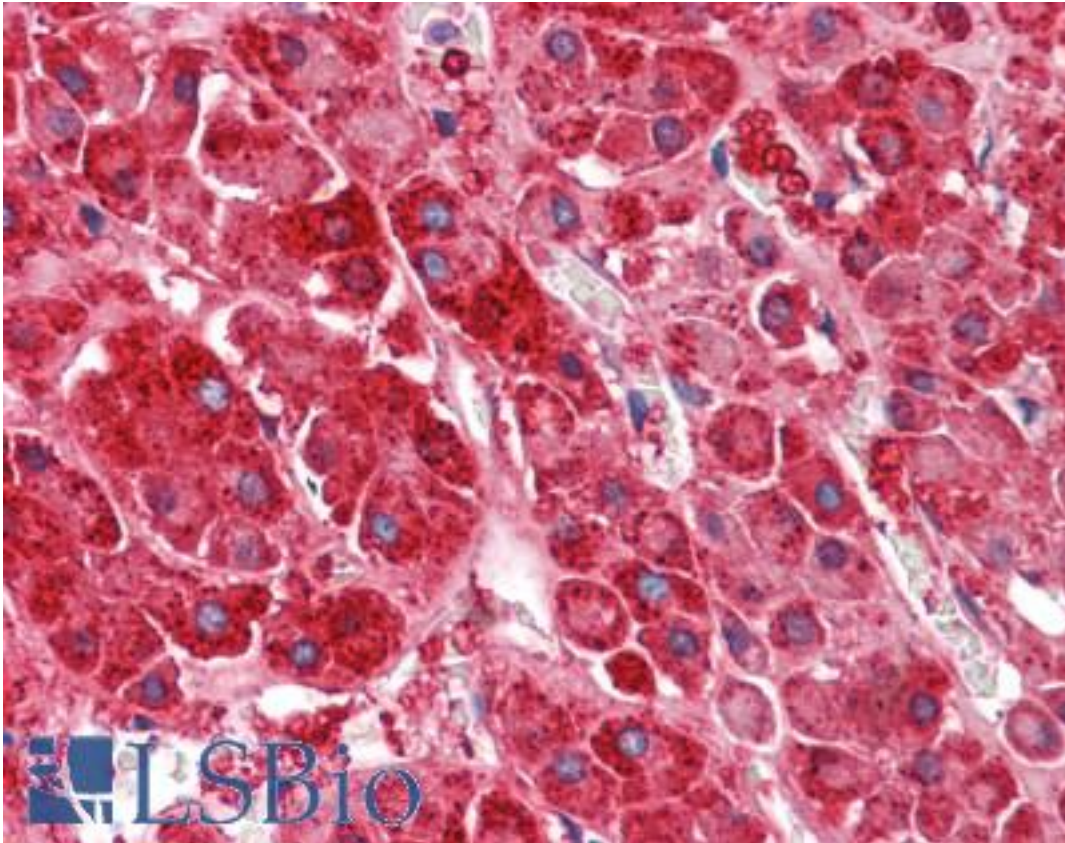


S1PR1 / EDG1 / S1P1 Rabbit anti-Human Polyclonal Antibody - LS-B9439 - LSBio

CatalogID:	LS-B9439
Validation:	This antibody replaces catalog number LS-C96204. It has been validated for use in the following assays: IHC-P.
Target:	sphingosine-1-phosphate receptor 1 (S1PR1)
Synonyms:	S1PR1 Antibody, CD363 Antibody, CD363 antigen Antibody, CHEDG1 Antibody, ECGF1 Antibody, EDG-1 Antibody, D1S3362 Antibody, EDG1 Antibody, S1P1 Antibody, S1P receptor Edg-1 Antibody, S1P receptor 1 Antibody
Family / Subfamily:	GPCR / Lysophospholipid/Lyso sphingolipid
Host	S1PR1 antibody was produced in Rabbit
Clonality:	Polyclonal
Immunogen Species:	S1PR1 / EDG1 / S1P1 antibody was raised against Human
Antigen Type:	Synthetic peptide
Immunogen:	S1PR1 / EDG1 / S1P1 antibody was raised against this polyclonal antibody was raised by immunizing rabbit with a synthetic peptide located on the putative extracellular domain of human EDG1.
Reactivity:	Human
Purification:	Affinity purified
Reconstitution:	Reconstitute with sterile water. Possible additional volumes for resuspension: 100 μ l
Presentation:	Lyophilized from PBS
Recommended Storage:	Store at 4°C for short term applications. For long term storage, aliquot and store at -20°C.
Uses:	IHC - Paraffin (5 μ g/ml), ELISA (1:3000) (Optimal dilution to be determined by the researcher)
Size:	100 μ g

Immunohistochemistry Image:



Human Adrenal: Formalin-Fixed, Paraffin-Embedded (FFPE)

Requested From:

Japan

Laboratory Reagent For In Vitro Research Use Only

Not for resale without prior written consent from LifeSpan BioSciences, Inc.

Created on 9/24/2014

© 2014 LifeSpan BioSciences