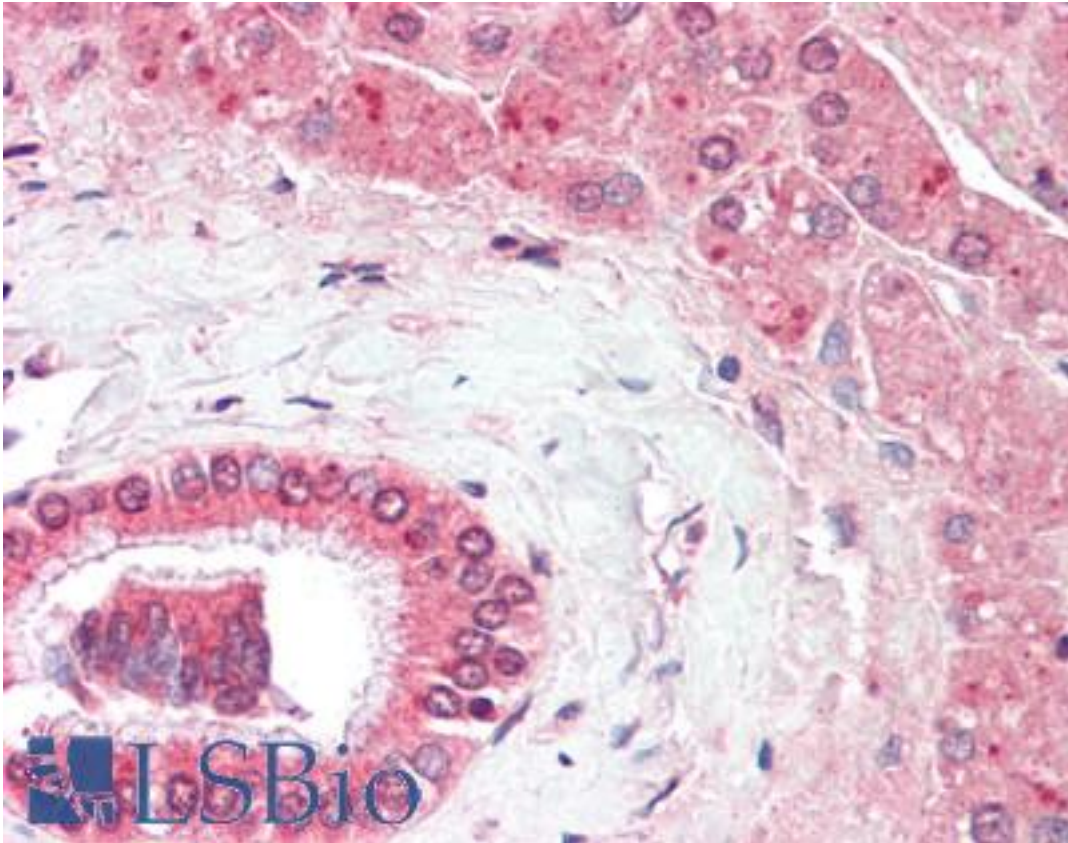


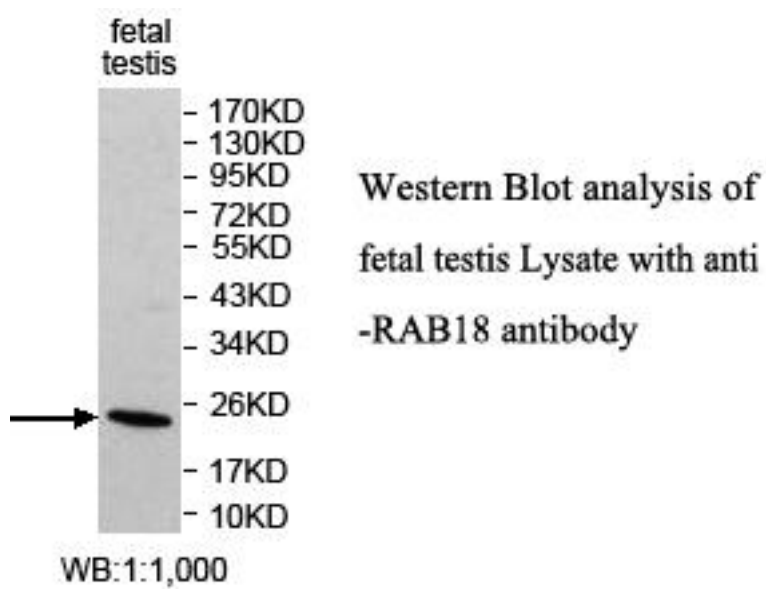
RAB18 Rabbit anti-Human Polyclonal (aa1-206) Antibody - LS-B9430 - LSBio	
CatalogID:	LS-B9430
Validation:	This antibody replaces catalog number LS-C178851. It has been validated for use in the following assays: IHC-P.
Target:	RAB18, member RAS oncogene family
Synonyms:	RAB18 Antibody, RAB18 small GTPase Antibody, RAB18LI1 Antibody, Ras-related protein Rab-18 Antibody, WARBM3 Antibody
Family / Subfamily:	Ras GTPase superfamily IPR001806 / RAS oncogene
Host	RAB18 antibody was produced in Rabbit
Clonality:	Polyclonal
Immunogen Species:	RAB18 antibody was raised against Human
Antigen Type:	Recombinant protein
Immunogen:	RAB18 antibody was raised against a recombinant human RAB18 protein 1-206aa (BC015014).
Specificity:	Human RAB18.
Epitope:	aa1-206
Reactivity:	Human
Purification:	Affinity purified
Presentation:	PBS, pH 7.4, 0.02% sodium azide
Recommended Storage:	Store at -20°C for up to one year.
Uses:	IHC - Paraffin (5 µg/ml), Western blot (1:1000 - 1:2000), ELISA (1:20000 - 1:80000) (Optimal dilution to be determined by the researcher)
Size:	50 µg
Concentration:	1 mg/ml

Immunohistochemistry Image:



Human Liver: Formalin-Fixed, Paraffin-Embedded (FFPE)

Western Blot Image:



Requested From:

Japan

Laboratory Reagent For In Vitro Research Use Only

Not for resale without prior written consent from LifeSpan BioSciences, Inc.

Created on 9/24/2014

© 2014 LifeSpan BioSciences