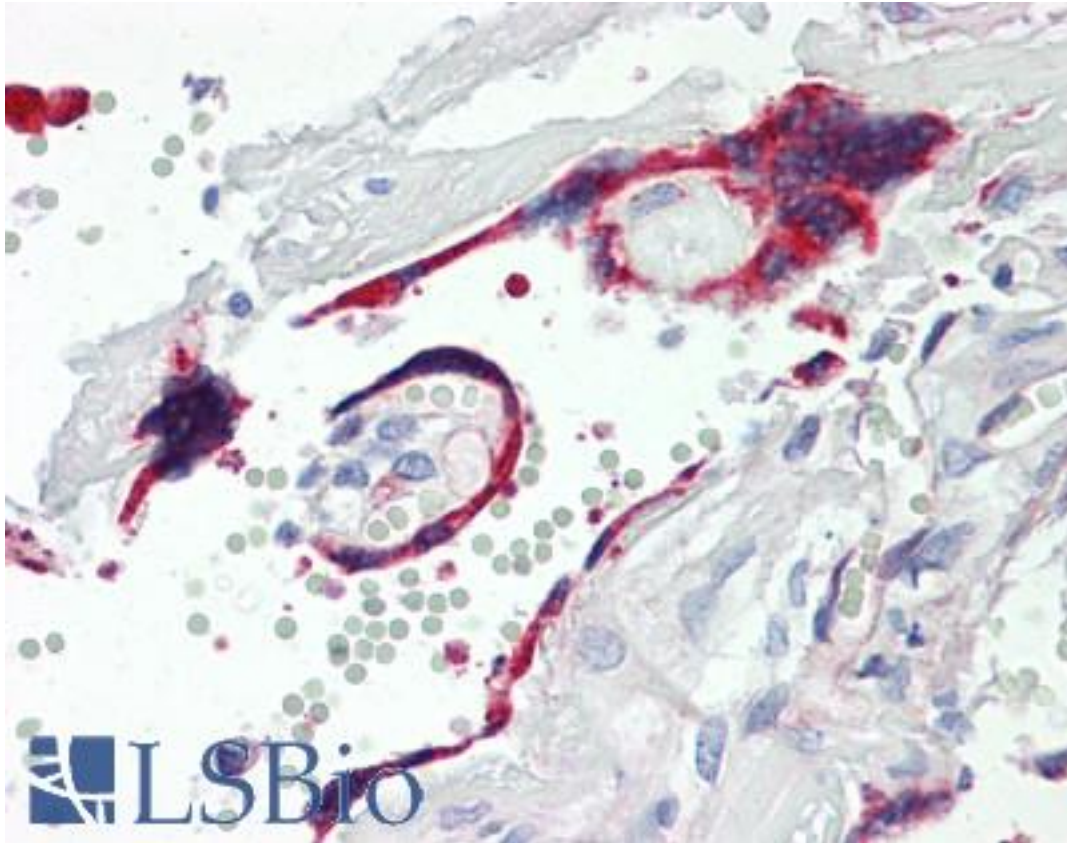


**Vasohibin 1 / VASH1 Mouse anti-Human Monoclonal (4A3) Antibody - LS-B9426 - LSBio**

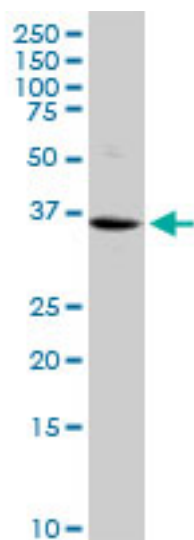
<b>CatalogID:</b>	LS-B9426
<b>Validation:</b>	This antibody replaces catalog number LS-C134039. It has been validated for use in the following assays: IHC-P.
<b>Target:</b>	vasohibin 1 (VASH1)
<b>Synonyms:</b>	VASH1 Antibody, KIAA1036 Antibody, VASH Antibody, Vasohibin 1 Antibody, Vasohibin-1 Antibody
<b>Host</b>	VASH1 antibody was produced in Mouse
<b>Clonality:</b>	Monoclonal
<b>Isotype:</b>	IgG2a,k
<b>Clone Name:</b>	4A3
<b>Immunogen Species:</b>	Vasohibin 1 / VASH1 antibody was raised against Human
<b>Immunogen:</b>	Vasohibin 1 / VASH1 antibody was raised against vASH1 (NP_055724, 3 a.a. ~ 101 a.a) partial recombinant protein with GST tag. MW of the GST tag alone is 26 KDa.
<b>Specificity:</b>	Human VASH1
<b>Reactivity:</b>	Human
<b>Purification:</b>	Protein A purified
<b>Presentation:</b>	PBS, pH 7.4.
<b>Recommended Storage:</b>	Store at -20°C or lower. Aliquot to avoid repeated freezing and thawing.
<b>Usage Summary:</b>	Immunohistochemistry: Formalin-fixed paraffin-embedded sections. Sandwich ELISA: Recombinant protein. Western Blot: Cell lysate, Recombinant protein.
<b>Uses:</b>	IHC - Paraffin (3 - 10 µg/ml), Western blot, ELISA (Optimal dilution to be determined by the researcher)
<b>Size:</b>	50 µg
<b>Concentration:</b>	0.42 mg/ml

**Immunohistochemistry Image:**



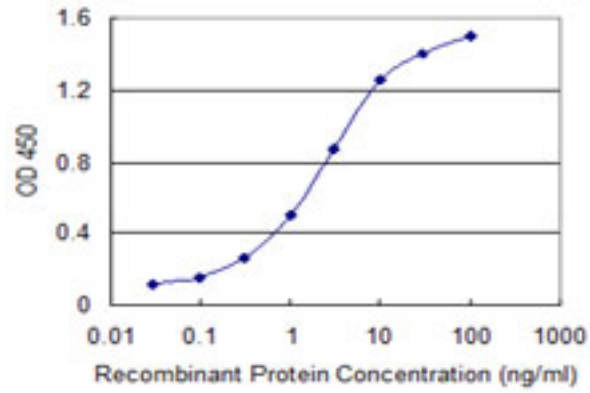
Human Placenta: Formalin-Fixed, Paraffin-Embedded (FFPE)

**Western Blot Image:**



VASH1 monoclonal antibody (M05), clone 4A3. Western blot of VASH1 expression in HepG2.

**ELISA Image:**



Detection limit for recombinant GST tagged VASH1 is 0.03 ng/ml as a capture antibody.

**Requested From:**

Japan

Laboratory Reagent For In Vitro Research Use Only

Not for resale without prior written consent from LifeSpan BioSciences, Inc.

Created on 9/24/2014

© 2014 LifeSpan BioSciences