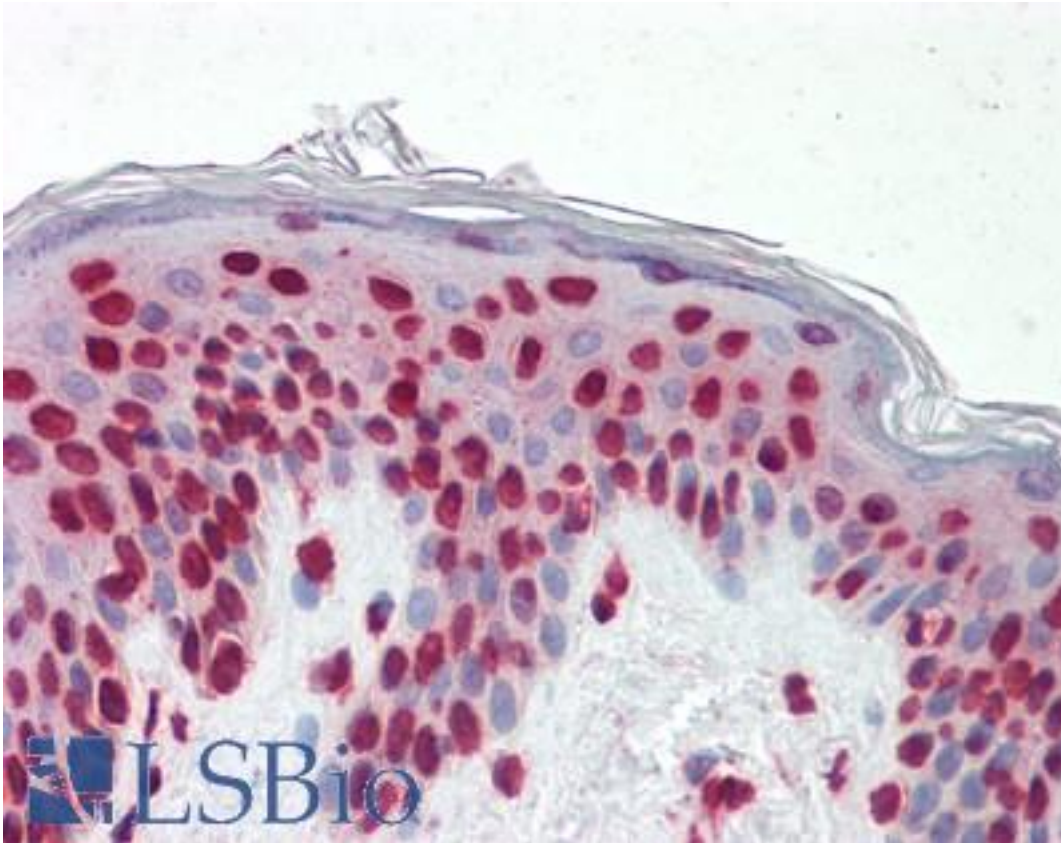


**GSC / Goosecoid Mouse anti-Human Monoclonal (2C1) Antibody - LS-B9425 - LSBio**

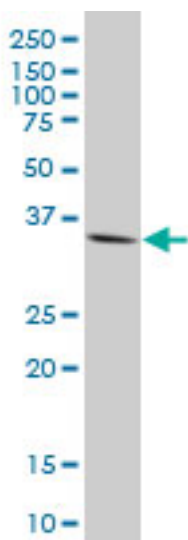
<b>CatalogID:</b>	LS-B9425
<b>Validation:</b>	This antibody replaces catalog number LS-C133838. It has been validated for use in the following assays: IHC-P.
<b>Target:</b>	goosecoid homeobox (GSC)
<b>Synonyms:</b>	GSC Antibody, Goosecoid homeobox Antibody, Homeobox protein goosecoid Antibody, Goosecoid Antibody
<b>Host</b>	GSC antibody was produced in Mouse
<b>Clonality:</b>	Monoclonal
<b>Isotype:</b>	IgG2a,k
<b>Clone Name:</b>	2C1
<b>Immunogen Species:</b>	GSC / Goosecoid antibody was raised against Human
<b>Immunogen:</b>	GSC / Goosecoid antibody was raised against gSC (NP_776248, 78 a.a. ~ 186 a.a) full length recombinant protein with GST tag. MW of the GST tag alone is 26 KDa.
<b>Specificity:</b>	Human GSC
<b>Reactivity:</b>	Human
<b>Purification:</b>	Protein A purified
<b>Presentation:</b>	PBS, pH 7.2
<b>Recommended Storage:</b>	Store at -20°C or lower. Aliquot to avoid repeated freezing and thawing.
<b>Usage Summary:</b>	Immunohistochemistry: Formalin-fixed paraffin-embedded sections. Western Blot: Tissue lysate, Recombinant protein.
<b>Uses:</b>	IHC - Paraffin (3 - 10 µg/ml), Western blot, ELISA (Optimal dilution to be determined by the researcher)
<b>Size:</b>	50 µg
<b>Concentration:</b>	0.5 mg/ml

**Immunohistochemistry Image:**



Human Skin: Formalin-Fixed, Paraffin-Embedded (FFPE)

**Western Blot Image:**



GSC monoclonal antibody (M17), clone 2C1. Western blot of GSC expression in human kidney.

Requested From:

Japan

Laboratory Reagent For In Vitro Research Use Only

Not for resale without prior written consent from LifeSpan BioSciences, Inc.

Created on 9/24/2014

© 2014 LifeSpan BioSciences