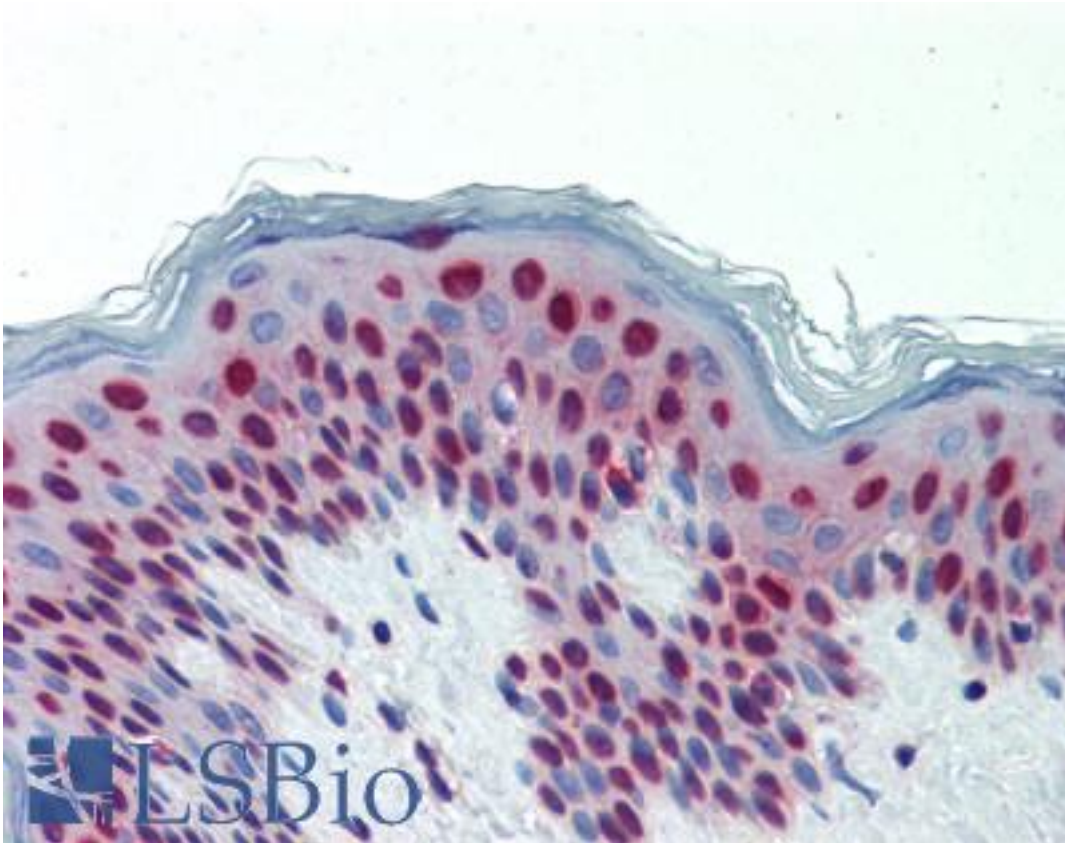


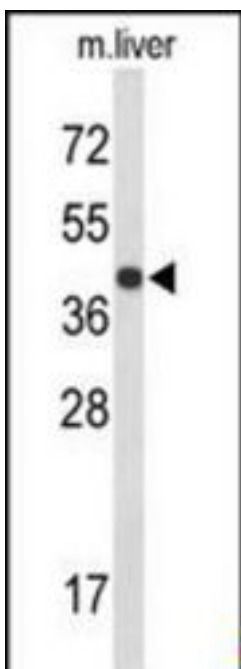
| CENPK Rabbit anti-Human Polyclonal Antibody - LS-B9423 - LSBio | |
|--|--|
| CatalogID: | LS-B9423 |
| Validation: | This antibody replaces catalog number LS-C168668. It has been validated for use in the following assays: IHC-P. |
| Target: | centromere protein K (CENPK) |
| Synonyms: | CENPK Antibody, Centromere protein K Antibody, CEMPK Antibody, AF5alpha Antibody, ICEN37 Antibody, p33 Antibody, Protein AF-5alpha Antibody, Leucine zipper protein FKSG14 Antibody, Solt Antibody, CENP-K Antibody, FKSG14 Antibody |
| Host | CENPK antibody was produced in Rabbit |
| Clonality: | Polyclonal |
| Immunogen Species: | CENPK antibody was raised against Human |
| Antigen Type: | Synthetic peptide |
| Immunogen: | CENPK antibody was raised against kLH-conjugated synthetic peptide selected from C-terminal region of human CENPK. |
| Specificity: | Human CENPK |
| Reactivity: | Human, Mouse |
| Purification: | Immunoaffinity purified |
| Presentation: | PBS, 0.09% sodium azide |
| Recommended Storage: | Maintain refrigerated at 2-8°C for up to 6 months. For long term storage store at -20°C. |
| Uses: | IHC - Paraffin (5 µg/ml), Western blot (1:1000) (Optimal dilution to be determined by the researcher) |
| Size: | 200 µl |

Immunohistochemistry Image:



Human Skin: Formalin-Fixed, Paraffin-Embedded (FFPE)

Western Blot Image:



Western blot of CENPK Antibody (C-term) in mouse liver tissue lysates (35 ug/lane). CENPK (arrow) was detected using the purified Pab.

| | |
|--|-------|
| Requested From: | Japan |
| Laboratory Reagent For In Vitro Research Use Only | |
| Not for resale without prior written consent from LifeSpan BioSciences, Inc. | |
| Created on 9/24/2014 | |
| © 2014 LifeSpan BioSciences | |