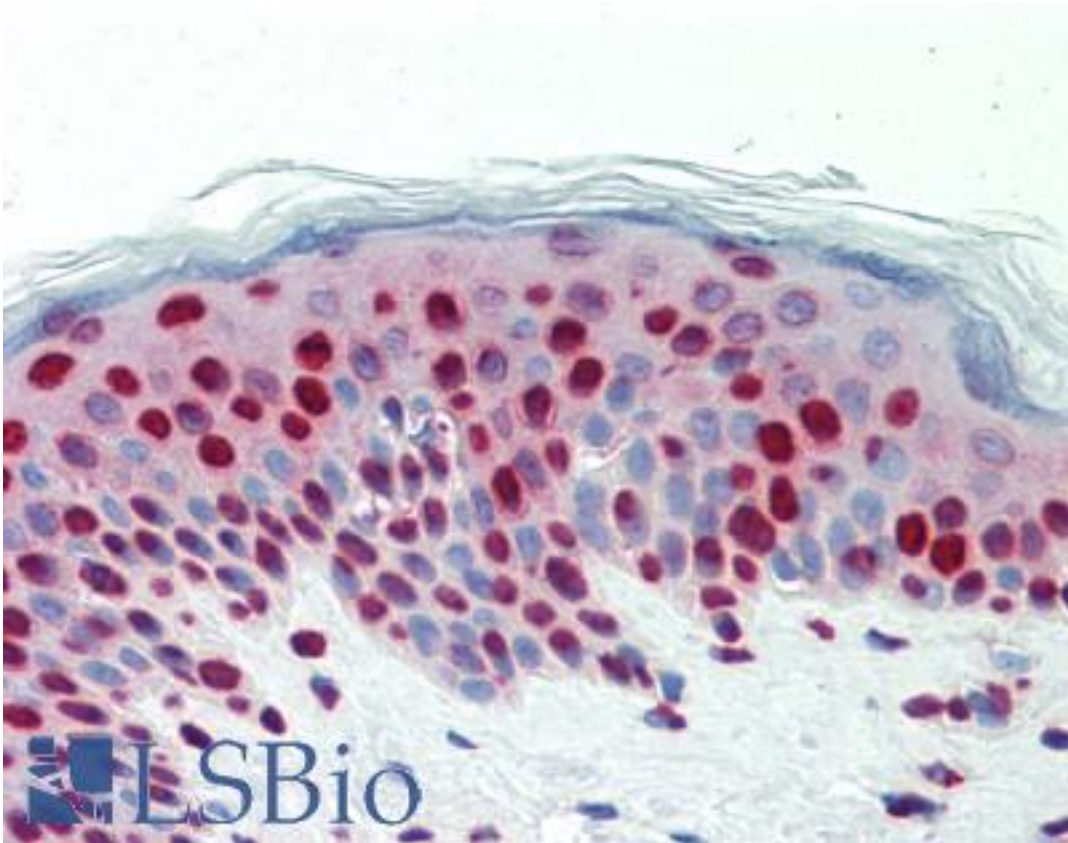


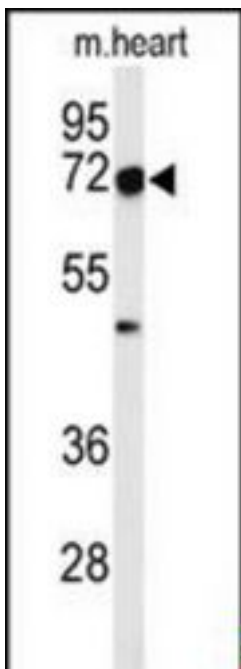
DCLRE1C / Artemis Rabbit anti-Human Polyclonal (aa21-50) Antibody - LS-B9422 - LSBio	
<b>CatalogID:</b>	LS-B9422
<b>Validation:</b>	This antibody replaces catalog number LS-C167296. It has been validated for use in the following assays: IHC-P.
<b>Target:</b>	DNA cross-link repair 1C (DCLRE1C)
<b>Synonyms:</b>	DCLRE1C Antibody, A-SCID Antibody, ARTEMIS Antibody, DCLREC1C Antibody, HSNM1C Antibody, SCIDA Antibody, RS-SCID Antibody, SNM1C Antibody, SNM1-like protein Antibody, Protein A-SCID Antibody, Protein artemis Antibody, PSO2 homolog Antibody, ASCID Antibody, DNA cross-link repair 1C Antibody, SNM1 homolog C Antibody
<b>Family / Subfamily:</b>	DNA cross-link repair
<b>Host</b>	DCLRE1C antibody was produced in Rabbit
<b>Clonality:</b>	Polyclonal
<b>Immunogen Species:</b>	DCLRE1C / Artemis antibody was raised against Human
<b>Antigen Type:</b>	Synthetic peptide
<b>Immunogen:</b>	DCLRE1C / Artemis antibody was raised against kLH-conjugated synthetic peptide from N-terminal region of human DCLRE1C.
<b>Specificity:</b>	Human ARTEMIS
<b>Epitope:</b>	aa21-50
<b>Reactivity:</b>	Human, Mouse
<b>Purification:</b>	Immunoaffinity purified
<b>Presentation:</b>	PBS, 0.09% sodium azide
<b>Recommended Storage:</b>	Maintain refrigerated at 2-8°C for up to 6 months. For long term storage store at -20°C.
<b>Uses:</b>	IHC - Paraffin (5 µg/ml), Western blot (1:1000) (Optimal dilution to be determined by the researcher)
<b>Size:</b>	200 µl

**Immunohistochemistry Image:**



Human Skin: Formalin-Fixed, Paraffin-Embedded (FFPE)

**Western Blot Image:**



Western blot of DCLRE1C Antibody (N-term) in mouse heart tissue lysates (35 ug/lane). DCLRE1C (arrow) was detected using the purified Pab.

<b>Requested From:</b>	Japan
Laboratory Reagent For In Vitro Research Use Only	
Not for resale without prior written consent from LifeSpan BioSciences, Inc.	
Created on 9/24/2014	
© 2014 LifeSpan BioSciences	