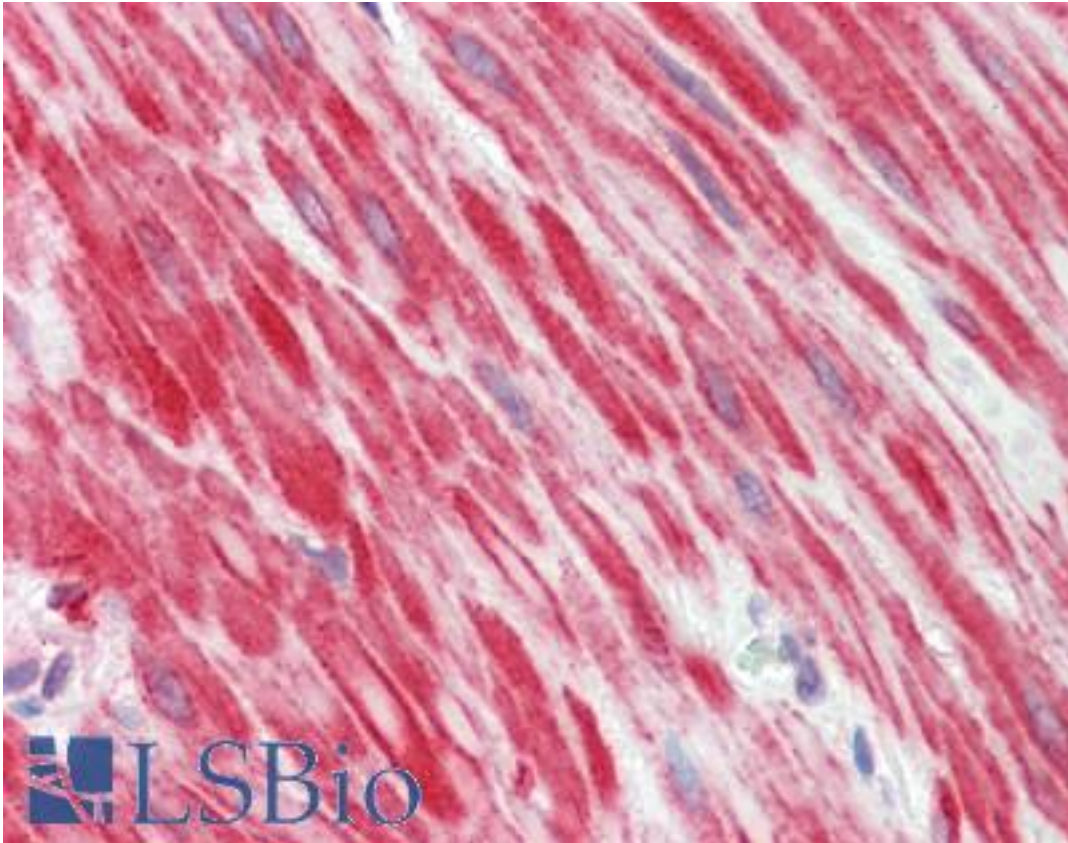


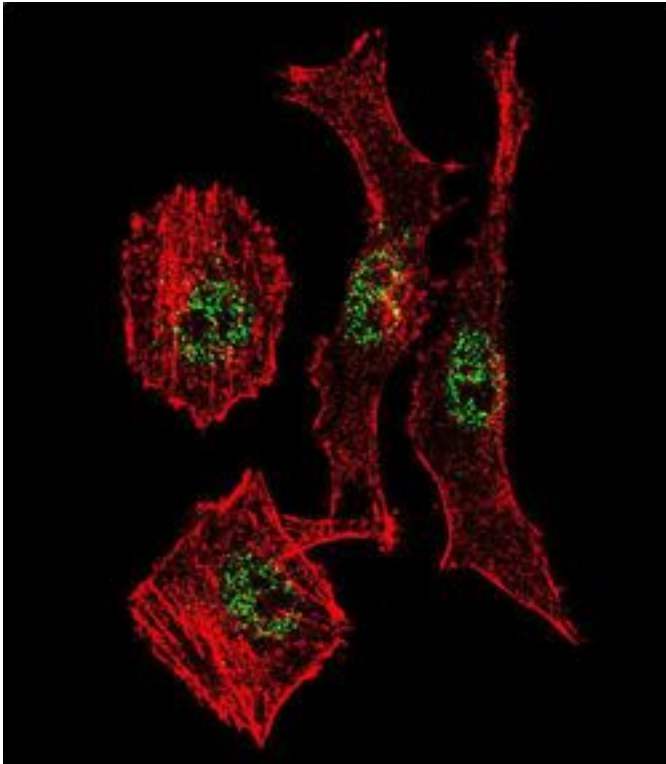
MYOD / MYOD1 Rabbit anti-Human Polyclonal (aa211-240) Antibody - LS-B9421 - LSBio	
CatalogID:	LS-B9421
Validation:	This antibody replaces catalog number LS-C164718. It has been validated for use in the following assays: IHC-P.
Target:	myogenic differentiation 1 (MYOD1)
Synonyms:	MYOD1 Antibody, BHLHc1 Antibody, Myogenic differentiation 1 Antibody, Myf-3 Antibody, MYOD Antibody, Myogenic factor 3 Antibody, PUM Antibody, MYF3 Antibody
Host	MYOD1 antibody was produced in Rabbit
Clonality:	Polyclonal
Immunogen Species:	MYOD / MYOD1 antibody was raised against Human
Antigen Type:	Synthetic peptide
Immunogen:	MYOD / MYOD1 antibody was raised against kLH-conjugated synthetic peptide from internal region of human MyoD1.
Specificity:	Human MYOD
Epitope:	aa211-240
Reactivity:	Human
Purification:	Immunoaffinity purified
Presentation:	PBS, 0.09% sodium azide
Recommended Storage:	Maintain refrigerated at 2-8°C for up to 6 months. For long term storage store at -20°C.
Uses:	IHC - Paraffin (5 µg/ml), Immunofluorescence (1:10 - 1:50), Western blot (1:1000) (Optimal dilution to be determined by the researcher)
Size:	200 µl

Immunohistochemistry Image:



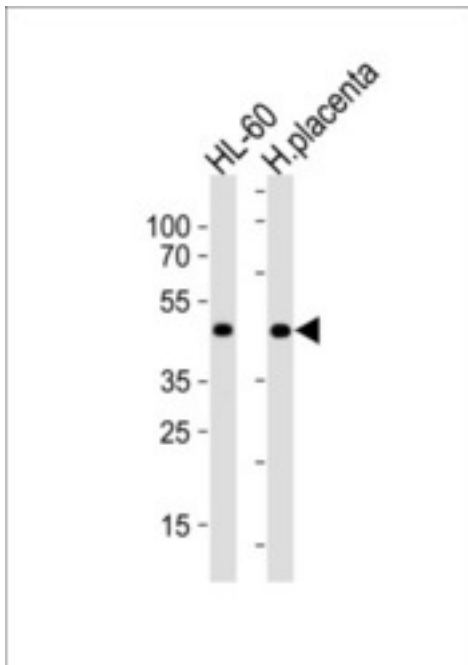
Human Small Intestine, Muscularis Propria: Formalin-Fixed, Paraffin-Embedded (FFPE)

Immunofluorescence Image:



Confocal immunofluorescence of MyoD1 Antibody (Center) with MDA-MB231 cell followed by Alexa Fluor 488-conjugated goat anti-rabbit IgG (green). Actin filaments have been labeled with Alexa Fluor 555 phalloidin (red).

Western Blot Image:



MyoD1 Antibody (Center) Western blot of HL-60 cell line lysates (35 ug/lane). This demonstrates the MyoD1 antibody detected the MyoD1 protein (arrow).

Requested From:	Japan
Laboratory Reagent For In Vitro Research Use Only	
Not for resale without prior written consent from LifeSpan BioSciences, Inc.	
Created on 9/24/2014	
© 2014 LifeSpan BioSciences	