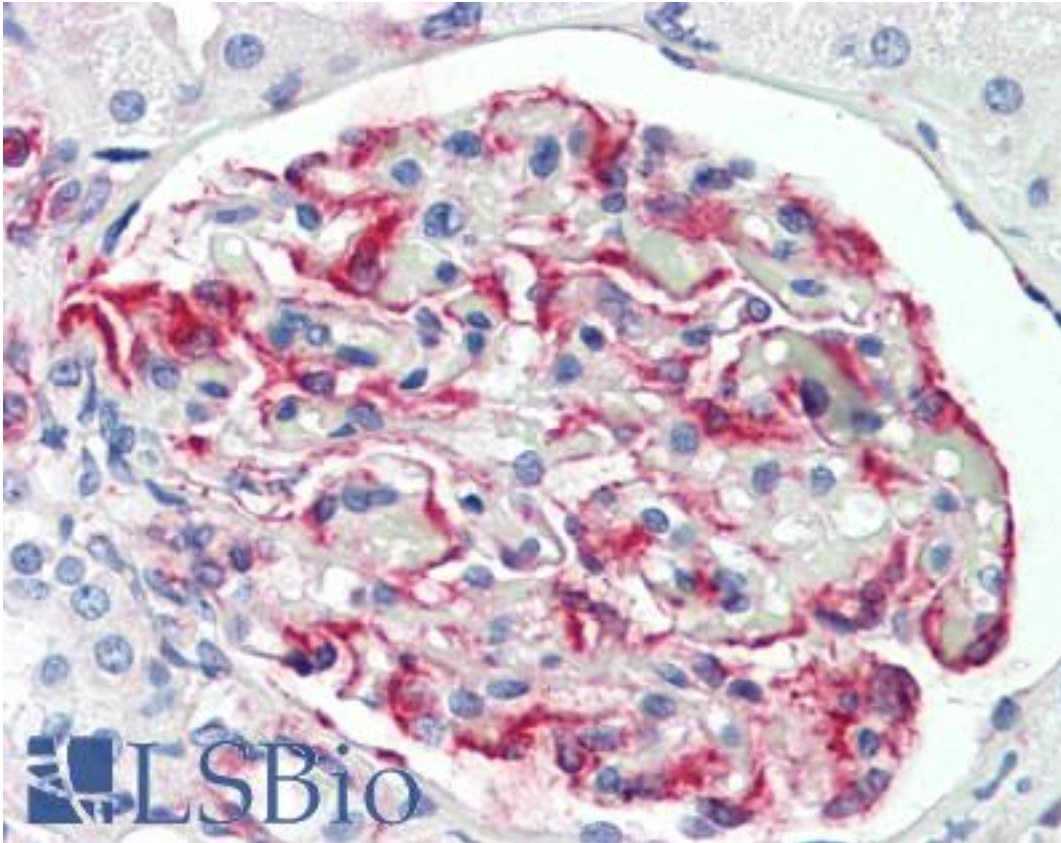


PEAK1 Rabbit anti-Human Polyclonal (aa672-699) Antibody - LS-B9420 - LSBio

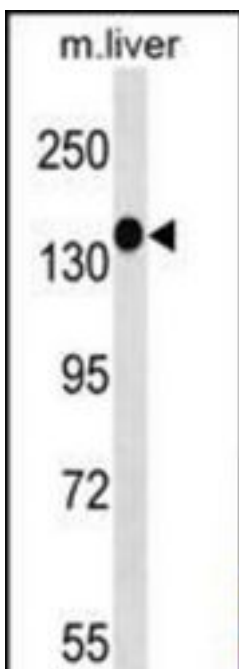
CatalogID:	LS-B9420
Validation:	This antibody replaces catalog number LS-C158959. It has been validated for use in the following assays: IHC-P.
Target:	pseudopodium-enriched atypical kinase 1 (PEAK1)
Synonyms:	PEAK1 Antibody, 9530046P14 Antibody, AA690169 Antibody, BE132841 Antibody, MKIAA2002 Antibody, SGK269 Antibody, RIKEN cDNA C230081A13 gene Antibody
Host	PEAK1 antibody was produced in Rabbit
Clonality:	Polyclonal
Immunogen Species:	PEAK1 antibody was raised against Human
Antigen Type:	Synthetic peptide
Immunogen:	PEAK1 antibody was raised against kLH-conjugated synthetic peptide from N-terminal region of human SGK269.
Specificity:	Human Sgk269
Epitope:	aa672-699
Reactivity:	Human, Mouse
Purification:	Immunoaffinity purified
Presentation:	PBS, 0.09% sodium azide
Recommended Storage:	Maintain refrigerated at 2-8°C for up to 6 months. For long term storage store at -20°C.
Uses:	IHC - Paraffin (5 µg/ml), Western blot (1:1000) (Optimal dilution to be determined by the researcher)
Size:	200 µl

Immunohistochemistry Image:



Human Kidney: Formalin-Fixed, Paraffin-Embedded (FFPE)

Western Blot Image:



SGK269 Antibody (N-term) Western blot of mouse liver tissue lysates (35 ug/lane). This demonstrates the SGK269 antibody detected the SGK269 protein (arrow).

Requested From:	Japan
Laboratory Reagent For In Vitro Research Use Only	
Not for resale without prior written consent from LifeSpan BioSciences, Inc.	
Created on 9/24/2014	
© 2014 LifeSpan BioSciences	