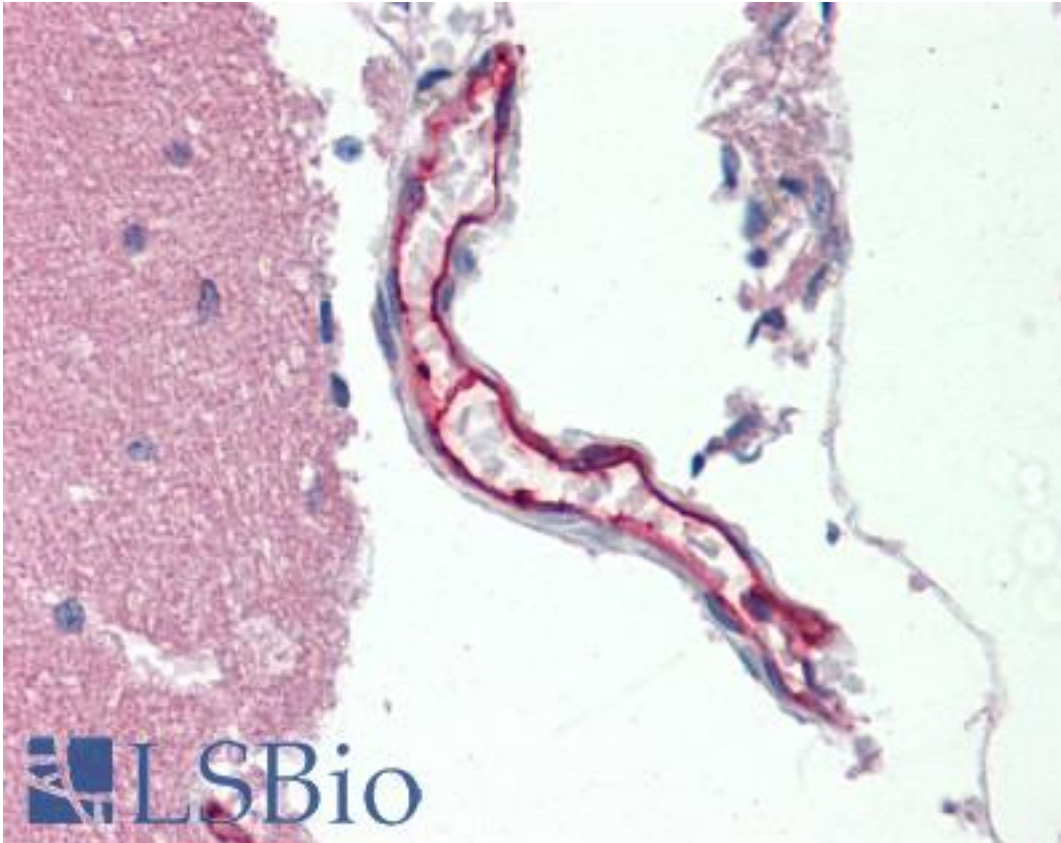


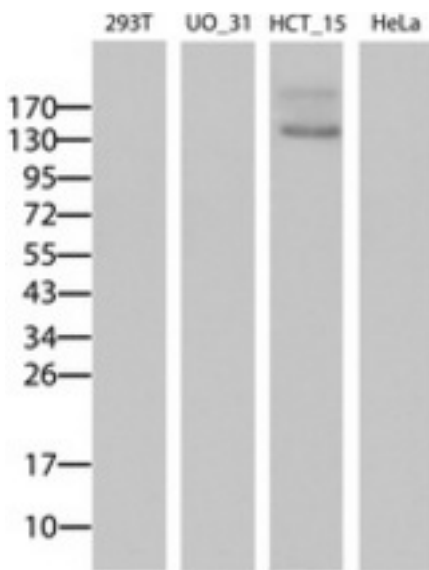
ABCB1 / MDR1 / P Glycoprotein Mouse anti-Human Monoclonal (6H2) Antibody - LS-B9413 - LSBio	
CatalogID:	LS-B9413
Validation:	This antibody replaces catalog number LS-C175526. It has been validated for use in the following assays: IHC-P.
Target:	ATP-binding cassette, sub-family B (MDR/TAP), member 1 (ABCB1)
Synonyms:	ABCB1 Antibody, ABC20 Antibody, Abcb1b Antibody, CLCS Antibody, Colchicin sensitivity Antibody, CD243 Antibody, Doxorubicin resistance Antibody, IBD13 Antibody, gp170 Antibody, MDR1 Antibody, Multidrug resistance protein 1 Antibody, P glycoprotein Antibody, P-glycoprotein 1 Antibody, P-GP Antibody, CD243 antigen Antibody, PGY1 Antibody
Family / Subfamily:	Transporter / ATP-binding cassette - ABCB/MDR
Host	ABCB1 antibody was produced in Mouse
Clonality:	Monoclonal
Isotype:	IgG2a
Clone Name:	6H2
Immunogen Species:	ABCB1 / MDR1 / P Glycoprotein antibody was raised against Human
Antigen Type:	Recombinant protein
Immunogen:	ABCB1 / MDR1 / P Glycoprotein antibody was raised against human recombinant protein fragment corresponding to amino acids 995-1280 of human ABCB1 (NP_000918) produced in SF9 cell.
Specificity:	Human ABCB1 / MDR1
Reactivity:	Human
Purification:	Protein A/G purified
Presentation:	PBS, pH 7.3, 1% BSA, 50% glycerol, 0.02% sodium azide
Recommended Storage:	Store at -20°C. Minimize freezing and thawing.
Uses:	IHC - Paraffin (10 µg/ml), Western blot (1:1000) (Optimal dilution to be determined by the researcher)
Size:	50 µl
Concentration:	1 mg/ml

Immunohistochemistry Image:



Human Vessel: Formalin-Fixed, Paraffin-Embedded (FFPE)

Western Blot Image:



Western blot of extracts (15 ug) from 4 different cell lines by using anti-ABCB1 monoclonal antibody (Lane 1: 293T; Lane 2: UO_31; Lane 3: HCT_115; Lane 4: HeLa).

Requested From:

Japan

Laboratory Reagent For In Vitro Research Use Only

Not for resale without prior written consent from LifeSpan BioSciences, Inc.

Created on 9/24/2014

© 2014 LifeSpan BioSciences