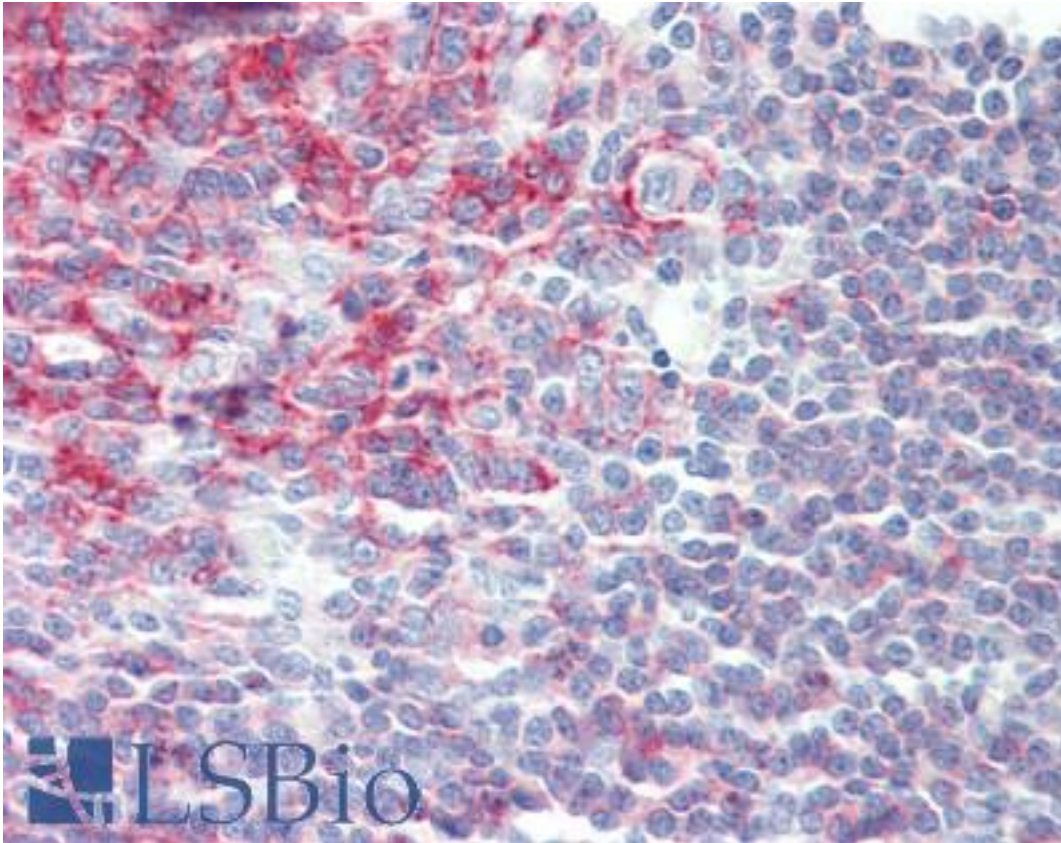


CD20 Mouse anti-Human Monoclonal (4B4) Antibody - LS-B9412 - LSBio

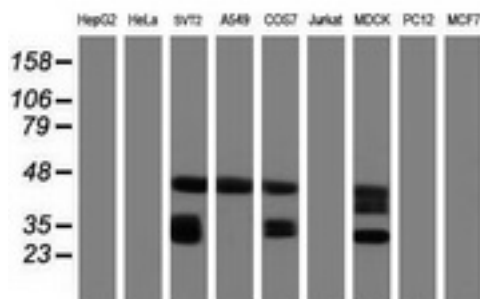
CatalogID:	LS-B9412
Validation:	This antibody replaces catalog number LS-C175267. It has been validated for use in the following assays: IHC-P.
Target:	membrane-spanning 4-domains, subfamily A, member 1 (MS4A1)
Synonyms:	MS4A1 Antibody, B-lymphocyte antigen CD20 Antibody, B1 Antibody, Bp35 Antibody, CD20 Antibody, CD20 antigen Antibody, CD20 receptor Antibody, LEU-16 Antibody, CVID5 Antibody
Host	MS4A1 antibody was produced in Mouse
Clonality:	Monoclonal
Isotype:	IgG1
Clone Name:	4B4
Immunogen Species:	CD20 antibody was raised against Human
Antigen Type:	Recombinant protein
Immunogen:	CD20 antibody was raised against full length human recombinant protein of human MS4A1 (NP_068769) produced in HEK293T cell.
Specificity:	Human CD20
Reactivity:	Human
Predicted Reactivity:	Monkey, Mouse, Dog
Purification:	Protein A/G purified
Presentation:	PBS, pH 7.3, 1% BSA, 50% glycerol, 0.02% sodium azide
Recommended Storage:	Store at -20°C. Minimize freezing and thawing.
Uses:	IHC - Paraffin (10 µg/ml), Western blot (1:2000) (Optimal dilution to be determined by the researcher)
Size:	50 µl
Concentration:	1 mg/ml

Immunohistochemistry Image:



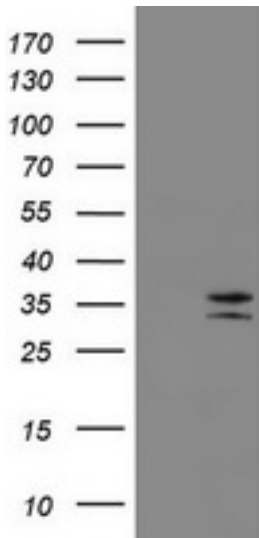
Human Tonsil: Formalin-Fixed, Paraffin-Embedded (FFPE)

Western Blot Image:



Western blot of extracts (35 ug) from 9 different cell lines by using anti-MS4A1 monoclonal antibody (HepG2: human; HeLa: human; SVT2: mouse; A549: human; COS7: monkey; Jurkat: human; MDCK: canine; PC12: rat; MCF7: human).

Western Blot Image:



HEK293T cells were transfected with the pCMV6-ENTRY control (Left lane) or pCMV6-ENTRY MS4A1 (Right lane) cDNA for 48 hrs and lysed. Equivalent amounts of cell lysates (5 ug per lane) were separated by SDS-PAGE and immunoblotted with anti-MS4A1.

Requested From:

Japan

Laboratory Reagent For In Vitro Research Use Only

Not for resale without prior written consent from LifeSpan BioSciences, Inc.

Created on 9/24/2014

© 2014 LifeSpan BioSciences