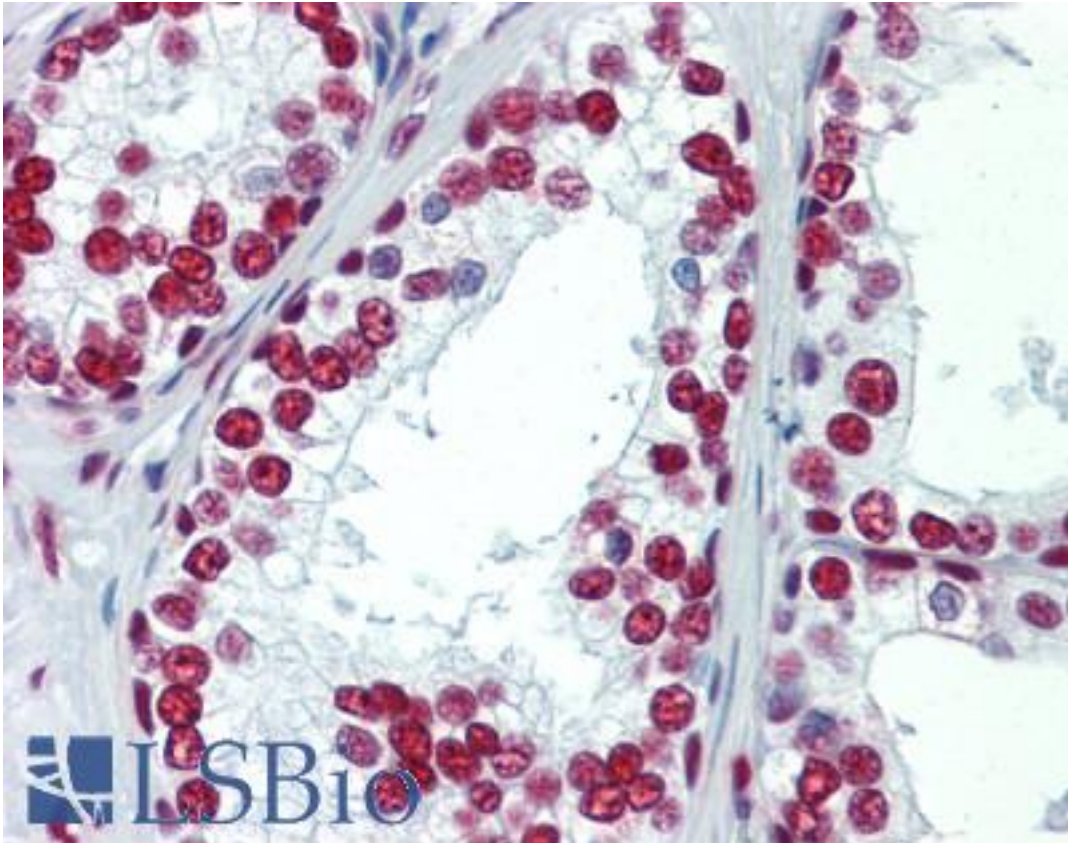


SAE1 Mouse anti-Human Monoclonal (1G8) Antibody - LS-B9408 - LSBio

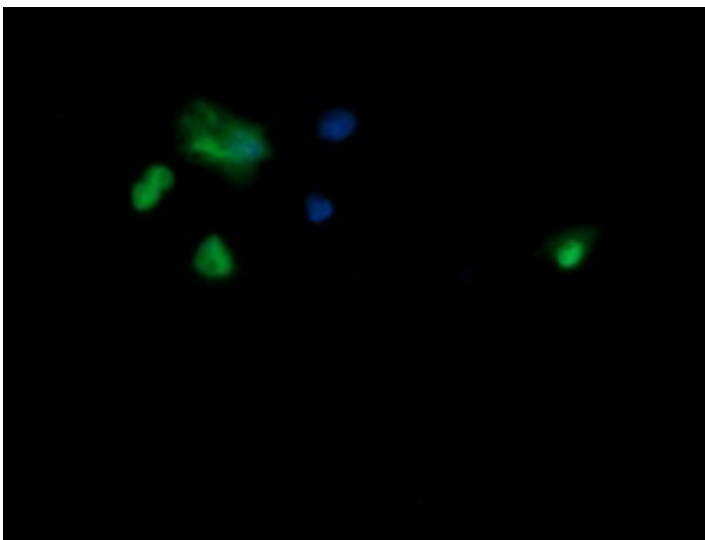
CatalogID:	LS-B9408
Validation:	This antibody replaces catalog number LS-C174665. It has been validated for use in the following assays: IHC-P.
Target:	SUMO1 activating enzyme subunit 1 (SAE1)
Synonyms:	SAE1 Antibody, Activator of SUMO1 Antibody, AOS1 Antibody, UBLE1A Antibody, HSPC140 Antibody, SUA1 Antibody
Host	SAE1 antibody was produced in Mouse
Clonality:	Monoclonal
Isotype:	IgG2b
Clone Name:	1G8
Immunogen Species:	SAE1 antibody was raised against Human
Antigen Type:	Recombinant protein
Immunogen:	SAE1 antibody was raised against full length human recombinant protein of human SAE1(NP_005491) produced in HEK293T cell.
Specificity:	Human SAE1
Reactivity:	Human
Purification:	Protein A/G purified
Presentation:	PBS, pH 7.3, 1% BSA, 50% glycerol, 0.02% sodium azide
Recommended Storage:	Store at -20°C. Minimize freezing and thawing.
Uses:	IHC - Paraffin (10 µg/ml), Immunofluorescence (1:100), Western blot (1:4000) (Optimal dilution to be determined by the researcher)
Size:	50 µl
Concentration:	1 mg/ml

Immunohistochemistry Image:



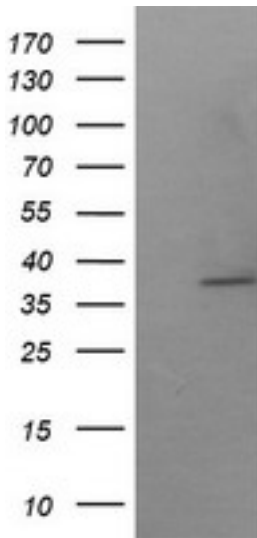
Human Prostate: Formalin-Fixed, Paraffin-Embedded (FFPE)

Immunofluorescence Image:



Anti-SAE1 mouse monoclonal antibody immunofluorescent staining of COS7 cells transiently transfected by pCMV6-ENTRY SAE1.

Western Blot Image:



HEK293T cells were transfected with the pCMV6-ENTRY control (Left lane) or pCMV6-ENTRY SAE1 (Right lane) cDNA for 48 hrs and lysed. Equivalent amounts of cell lysates (5 ug per lane) were separated by SDS-PAGE and immunoblotted with anti-SAE1.

Requested From:

Japan

Laboratory Reagent For In Vitro Research Use Only

Not for resale without prior written consent from LifeSpan BioSciences, Inc.

Created on 9/24/2014

© 2014 LifeSpan BioSciences