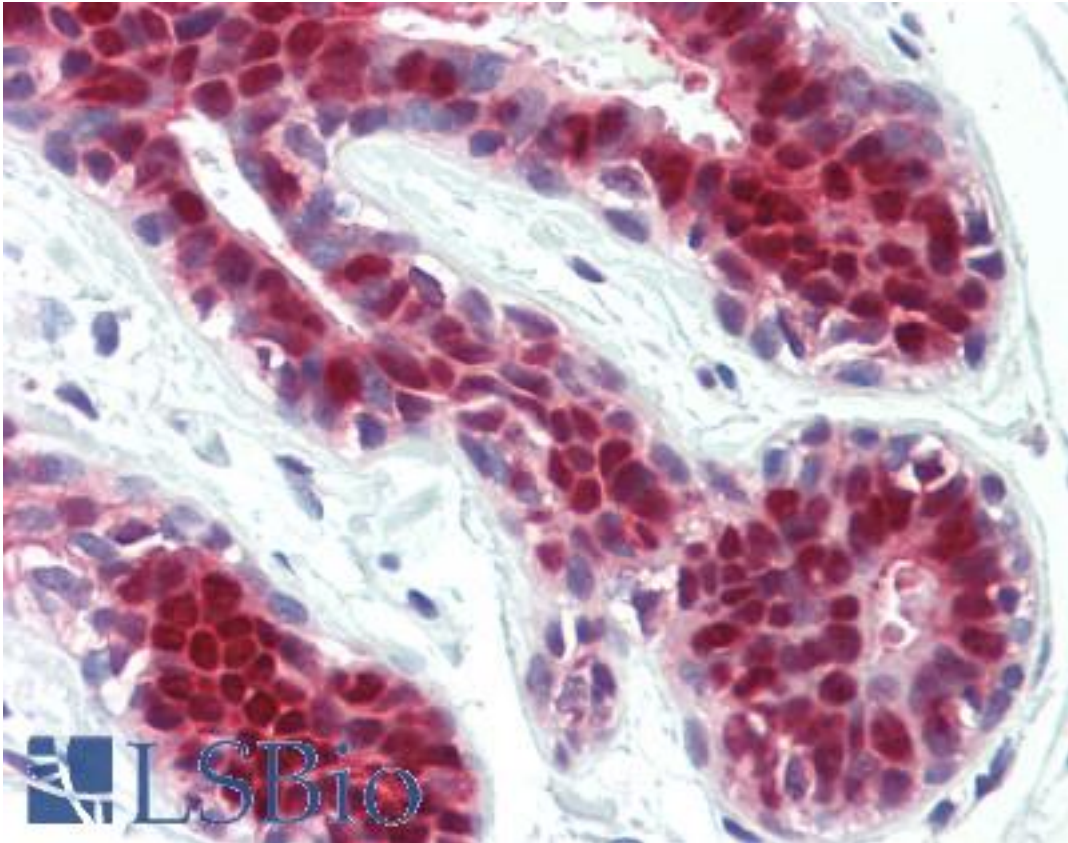


STAT5A Mouse anti-Human Monoclonal (4E7) Antibody - LS-B9406 - LSBio

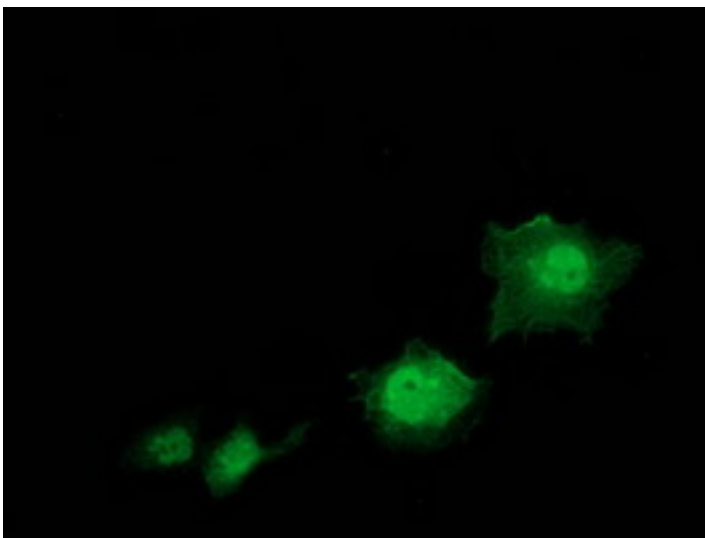
CatalogID:	LS-B9406
Validation:	This antibody replaces catalog number LS-C172877. It has been validated for use in the following assays: IHC-P.
Target:	signal transducer and activator of transcription 5A (STAT5A)
Synonyms:	STAT5A Antibody, MGF Antibody, STAT5 Antibody
Host	STAT5A antibody was produced in Mouse
Clonality:	Monoclonal
Isotype:	IgG1
Clone Name:	4E7
Immunogen Species:	STAT5A antibody was raised against Human
Antigen Type:	Recombinant protein
Immunogen:	STAT5A antibody was raised against full length human recombinant protein of human STAT5A (NP_003143) produced in HEK293T cell.
Specificity:	Human STAT5A / STAT5
Reactivity:	Human
Predicted Reactivity:	Monkey, Rat, Dog
Purification:	Protein A/G purified
Presentation:	PBS, pH 7.3, 1% BSA, 50% glycerol, 0.02% sodium azide
Recommended Storage:	Store at -20°C. Minimize freezing and thawing.
Uses:	IHC - Paraffin (10 µg/ml), Immunofluorescence (1:100), Western blot (1:500 - 1:2000), Flow Cytometry (1:100) (Optimal dilution to be determined by the researcher)
Size:	100 µl
Concentration:	0.71 mg/ml

Immunohistochemistry Image:



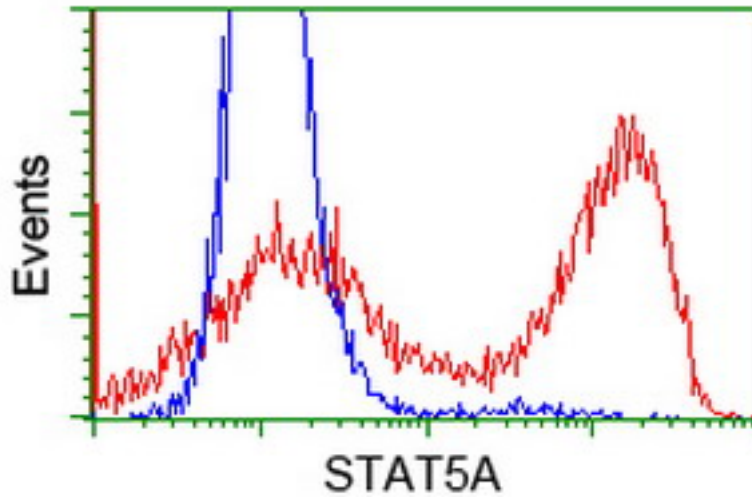
Human Breast: Formalin-Fixed, Paraffin-Embedded (FFPE)

Immunofluorescence Image:



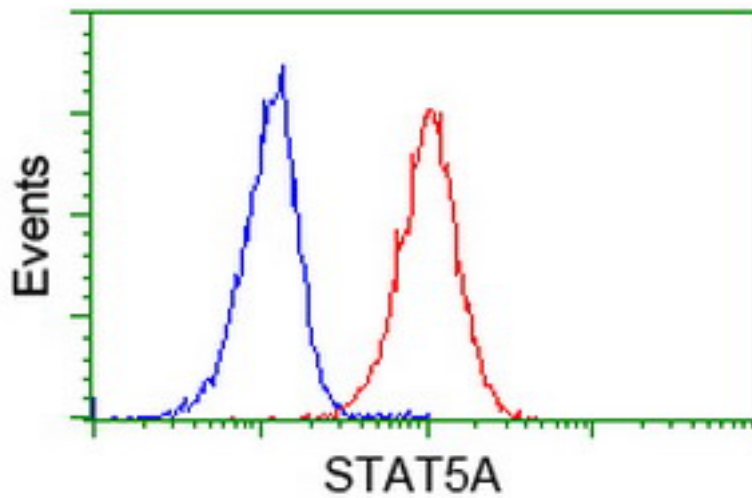
Anti-STAT5A mouse monoclonal antibody immunofluorescent staining of COS7 cells transiently transfected by pCMV6-ENTRY STAT5A.

Flow Cytometry Image:



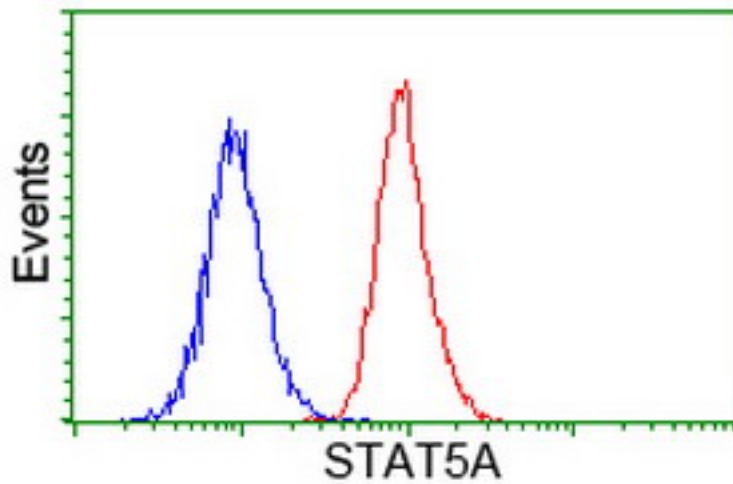
HEK293T cells transfected with either overexpress plasmid (Red) or empty vector control plasmid (Blue) were immunostained by anti-STAT5A antibody, and then analyzed by flow cytometry.

Flow Cytometry Image:



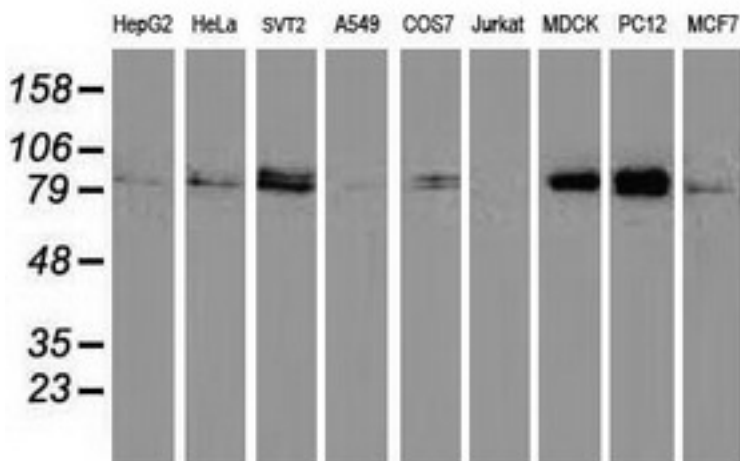
Flow cytometry of Jurkat cells, using anti-STAT5A antibody (Red), compared to a nonspecific negative control antibody (Blue).

Flow Cytometry Image:



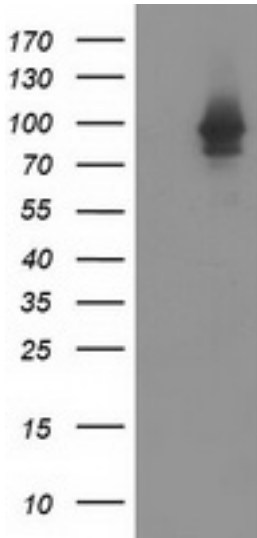
Flow cytometry of HeLa cells, using anti-STAT5A antibody (Red), compared to a nonspecific negative control antibody (Blue).

Western Blot Image:



Western blot of extracts (35 ug) from 9 different cell lines by using anti-STAT5A monoclonal antibody (HepG2: human; HeLa: human; SVT2: mouse; A549: human; COS7: monkey; Jurkat: human; MDCK: canine; PC12: rat; MCF7: human).

Western Blot Image:



HEK293T cells were transfected with the pCMV6-ENTRY control (Left lane) or pCMV6-ENTRY STAT5A (Right lane) cDNA for 48 hrs and lysed. Equivalent amounts of cell lysates (5 ug per lane) were separated by SDS-PAGE and immunoblotted with anti-STAT5A.

Requested From:

Japan

Laboratory Reagent For In Vitro Research Use Only

Not for resale without prior written consent from LifeSpan BioSciences, Inc.

Created on 9/24/2014

© 2014 LifeSpan BioSciences