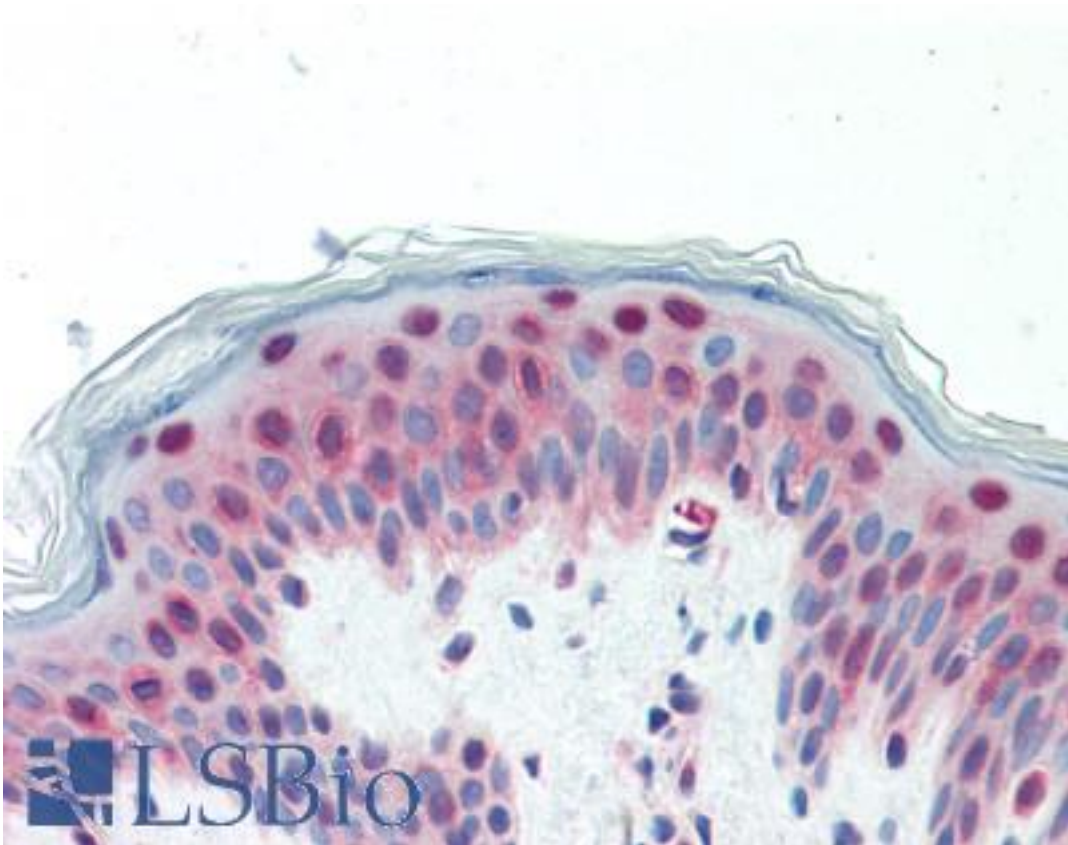


GABPA / NRF2 Rabbit anti-Human Polyclonal Antibody - LS-B9401 - LSBio	
CatalogID:	LS-B9401
Validation:	This antibody replaces catalog number LS-C186430. It has been validated for use in the following assays: IHC-P.
Target:	GA binding protein transcription factor, alpha subunit 60kDa (GABPA)
Synonyms:	GABPA Antibody, E4TF1A Antibody, E4TF1-60 Antibody, GA-binding protein alpha chain Antibody, NRF2A Antibody, RCH04A07 Antibody, GABP subunit alpha Antibody, NFT2 Antibody, NRF2 Antibody, Transcription factor E4TF1-60 Antibody
Host	GABPA antibody was produced in Rabbit
Clonality:	Polyclonal
Isotype:	IgG
Immunogen Species:	GABPA / NRF2 antibody was raised against Human
Immunogen:	GABPA / NRF2 antibody was raised against human Nrf2 N-terminal amino acids 18-29
Specificity:	Detects both poly-ubiquitination Nrf2 at 90 kDa and native Nrf2 at 67 kDa.
Reactivity:	Human, Mouse, Rat
Purification:	Affinity purified
Presentation:	lyophilized from 500 µl TBS
Recommended Storage:	Short term 4°C, long term aliquot and store at -20°C, avoid freeze thaw cycles.
Usage Summary:	Resuspend the IgG in 500 µl of purified water prior to use. Sufficient antibody is provided for 10 western blots.
Uses:	IHC - Paraffin (5 µg/ml), ICC, Western blot (1:200), Flow Cytometry (Optimal dilution to be determined by the researcher)
Size:	1 ea

Immunohistochemistry Image:



Human Skin: Formalin-Fixed, Paraffin-Embedded (FFPE)

Requested From:

Japan

Laboratory Reagent For In Vitro Research Use Only

Not for resale without prior written consent from LifeSpan BioSciences, Inc.

Created on 9/24/2014

© 2014 LifeSpan BioSciences