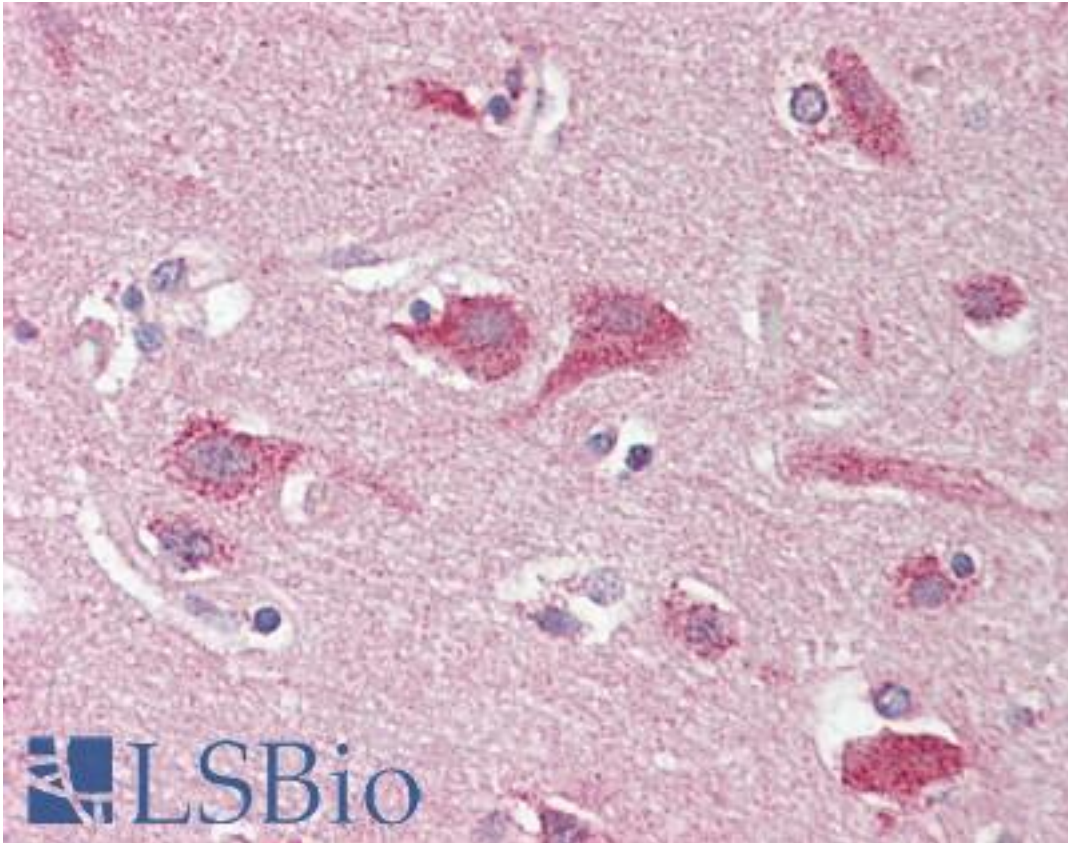


OPCML / OBCAM Rabbit anti-Human Polyclonal Antibody - LS-B9395 - LSBio	
CatalogID:	LS-B9395
Validation:	This antibody replaces catalog number LS-C137343. It has been validated for use in the following assays: IHC-P.
Target:	opioid binding protein/cell adhesion molecule-like (OPCML)
Synonyms:	OPCML Antibody, IGLON1 Antibody, OBCAM Antibody, OPCM Antibody, IgLON family member 1 Antibody
Host	OPCML antibody was produced in Rabbit
Clonality:	Polyclonal
Isotype:	IgG
Immunogen Species:	OPCML / OBCAM antibody was raised against Human
Antigen Type:	Recombinant protein
Immunogen:	OPCML / OBCAM antibody was raised against recombinant protein
Reactivity:	Human
Purification:	Affinity purified
Presentation:	PBS, pH 7.4, 0.02% sodium azide
Recommended Storage:	Store at -20°C for up to one year.
Uses:	IHC - Paraffin (5 µg/ml), Western blot (1:500 - 1:1000) (Optimal dilution to be determined by the researcher)
Size:	50 µl
Concentration:	1 mg/ml

Immunohistochemistry Image:



Human Brain, Cortex: Formalin-Fixed, Paraffin-Embedded (FFPE)

Requested From:

Japan

Laboratory Reagent For In Vitro Research Use Only

Not for resale without prior written consent from LifeSpan BioSciences, Inc.

Created on 9/24/2014

© 2014 LifeSpan BioSciences