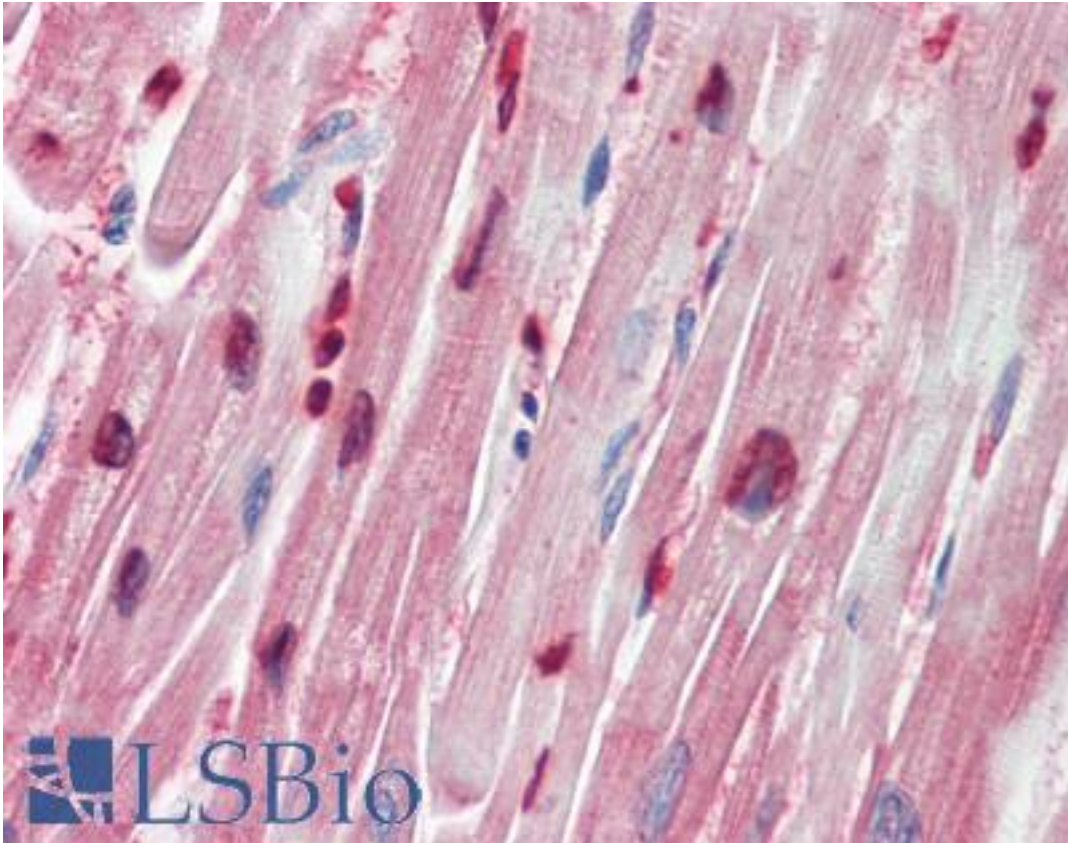


**ZEB1 / AREB6 Rabbit anti-Human Polyclonal Antibody - LS-B9390 - LSBio**

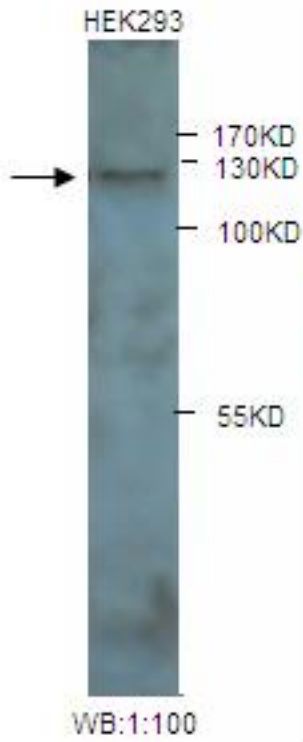
<b>CatalogID:</b>	LS-B9390
<b>Validation:</b>	This antibody replaces catalog number LS-C136902. It has been validated for use in the following assays: IHC-P.
<b>Target:</b>	zinc finger E-box binding homeobox 1 (ZEB1)
<b>Synonyms:</b>	ZEB1 Antibody, AREB6 Antibody, BZP Antibody, FECD6 Antibody, NIL-2-A zinc finger protein Antibody, TCF-8 Antibody, Negative regulator of IL2 Antibody, NIL2A Antibody, ZEB Antibody, ZFHEP Antibody, DELTAEF1 Antibody, NIL-2-A Antibody, PPCD3 Antibody, TCF8 Antibody, Transcription factor 8 Antibody, ZFHX1A Antibody
<b>Family / Subfamily:</b>	Transcription factor / not assigned-Transcription factor
<b>Host</b>	ZEB1 antibody was produced in Rabbit
<b>Clonality:</b>	Polyclonal
<b>Isotype:</b>	IgG
<b>Immunogen Species:</b>	ZEB1 / AREB6 antibody was raised against Human
<b>Antigen Type:</b>	Synthetic peptide - KLH conjugated
<b>Immunogen:</b>	ZEB1 / AREB6 antibody was raised against synthetic peptide conjugated to KLH
<b>Specificity:</b>	AREB6 antibody detects endogenous levels of AREB6 protein. Not tested with other proteins.
<b>Reactivity:</b>	Human
<b>Purification:</b>	Purified
<b>Presentation:</b>	PBS, pH 7.4, 0.05% sodium azide
<b>Recommended Storage:</b>	Store at -20°C for up to one year.
<b>Uses:</b>	IHC - Paraffin (1:100), Western blot (1:100) (Optimal dilution to be determined by the researcher)
<b>Size:</b>	50 µl

**Immunohistochemistry Image:**



Human Heart: Formalin-Fixed, Paraffin-Embedded (FFPE)

**Western Blot Image:**



Western Blot analysis of HEK293 cell lysates with anti-AREB6 antibody ↵

↵

↵

**Requested From:**

Japan

Laboratory Reagent For In Vitro Research Use Only

Not for resale without prior written consent from LifeSpan BioSciences, Inc.

Created on 9/24/2014

© 2014 LifeSpan BioSciences