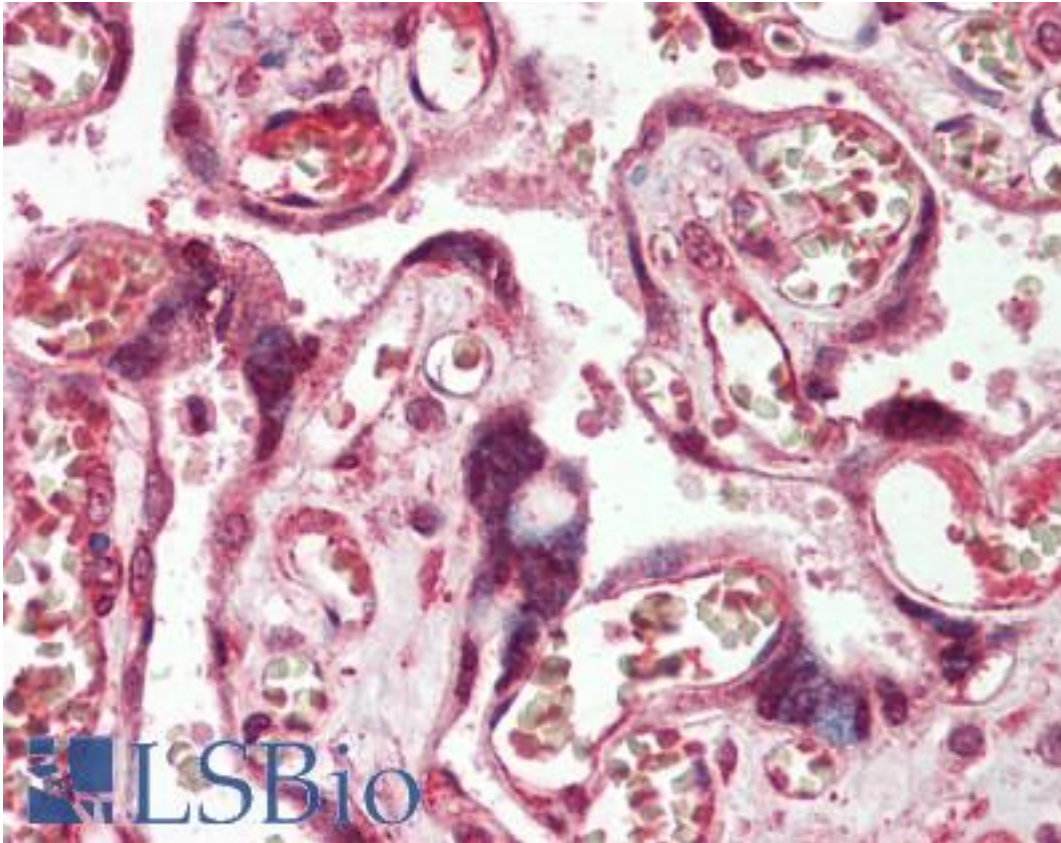


**ADAM19 Rabbit anti-Human Polyclonal Antibody - LS-B9389 - LSBio**

<b>CatalogID:</b>	LS-B9389
<b>Validation:</b>	This antibody replaces catalog number LS-C136820. It has been validated for use in the following assays: IHC-P.
<b>Target:</b>	ADAM metallopeptidase domain 19 (ADAM19)
<b>Synonyms:</b>	ADAM19 Antibody, ADAM 19 Antibody, FKSG34 Antibody, Meltrin beta Antibody, Meltrin-beta Antibody, MLTNB Antibody, MADDAM Antibody
<b>Family / Subfamily:</b>	Protease / Metallopeptidase M12B
<b>Host</b>	ADAM19 antibody was produced in Rabbit
<b>Clonality:</b>	Polyclonal
<b>Isotype:</b>	IgG
<b>Immunogen Species:</b>	ADAM19 antibody was raised against Human
<b>Antigen Type:</b>	Synthetic peptide - KLH conjugated
<b>Immunogen:</b>	ADAM19 antibody was raised against synthetic peptide conjugated to KLH
<b>Specificity:</b>	Not tested with other proteins.
<b>Reactivity:</b>	Human
<b>Purification:</b>	Protein A purified
<b>Presentation:</b>	PBS, pH 7.4, 0.05% sodium azide
<b>Recommended Storage:</b>	Store at -20°C for up to one year.
<b>Uses:</b>	IHC - Paraffin (1:100), Western blot (1:250) (Optimal dilution to be determined by the researcher)
<b>Size:</b>	50 µl

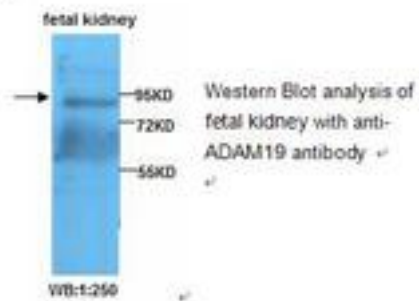
**Immunohistochemistry Image:**



Human Placenta: Formalin-Fixed, Paraffin-Embedded (FFPE)

**Western Blot Image:**

This antibody identifies a band of approximately 87KD in fetal kidney lysates. This band represents ADAM19 mature form.



**Requested From:**

Japan

Laboratory Reagent For In Vitro Research Use Only

Not for resale without prior written consent from LifeSpan BioSciences, Inc.

Created on 9/24/2014

© 2014 LifeSpan BioSciences