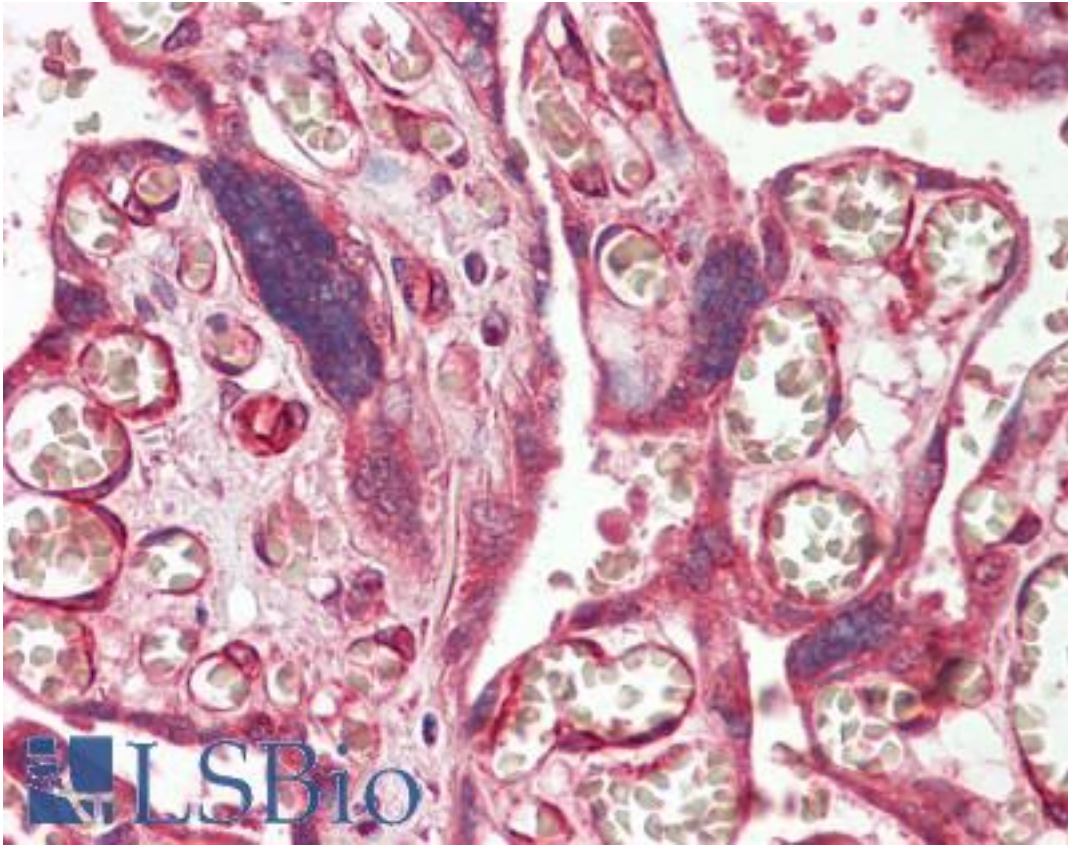


ADAM19 Rabbit anti-Human Polyclonal Antibody - LS-B9388 - LSBio

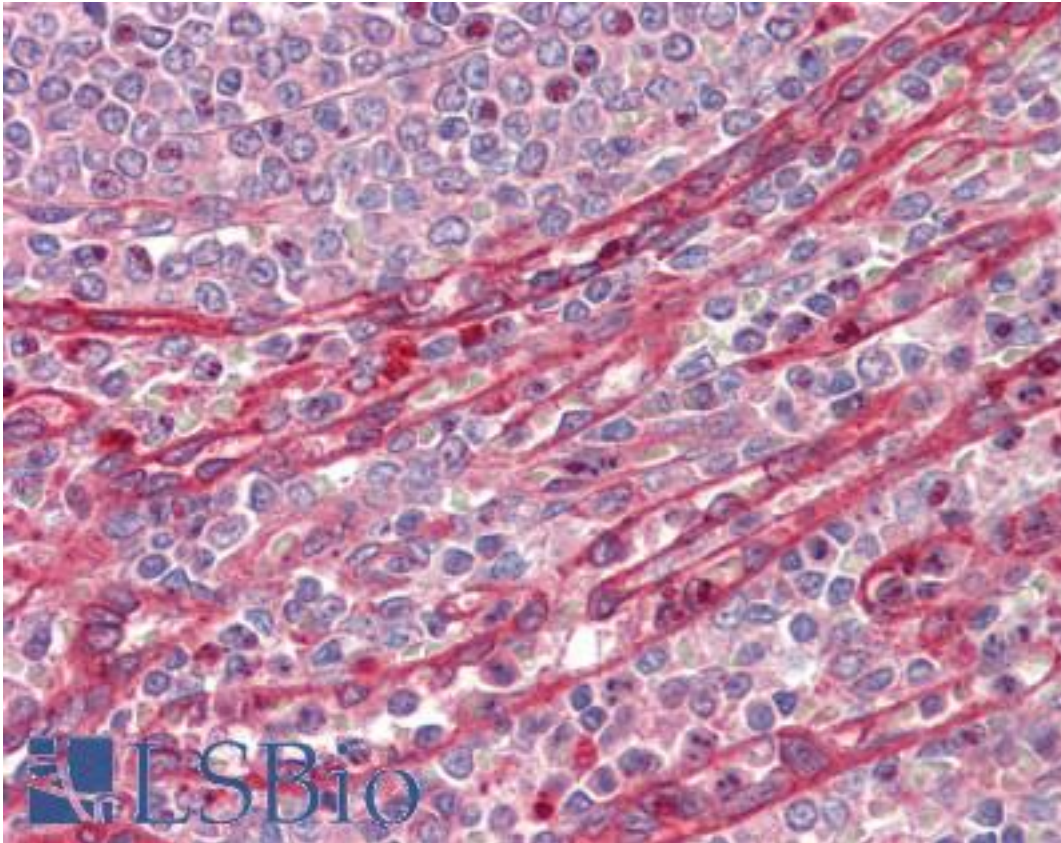
CatalogID:	LS-B9388
Validation:	This antibody replaces catalog number LS-C136819. It has been validated for use in the following assays: IHC-P.
Target:	ADAM metallopeptidase domain 19 (ADAM19)
Synonyms:	ADAM19 Antibody, ADAM 19 Antibody, FKSG34 Antibody, Meltrin beta Antibody, Meltrin-beta Antibody, MLTNB Antibody, MADDAM Antibody
Family / Subfamily:	Protease / Metallopeptidase M12B
Host	ADAM19 antibody was produced in Rabbit
Clonality:	Polyclonal
Isotype:	IgG
Immunogen Species:	ADAM19 antibody was raised against Human
Antigen Type:	Synthetic peptide - KLH conjugated
Immunogen:	ADAM19 antibody was raised against synthetic peptide conjugated to KLH
Specificity:	Not tested with other proteins.
Reactivity:	Human
Purification:	Protein A purified
Presentation:	PBS, pH 7.4, 0.05% sodium azide
Recommended Storage:	Store at -20°C for up to one year.
Uses:	IHC - Paraffin (5 µg/ml), Western blot (1:250) (Optimal dilution to be determined by the researcher)
Size:	50 µl

Immunohistochemistry Image:



Human Placenta: Formalin-Fixed, Paraffin-Embedded (FFPE)

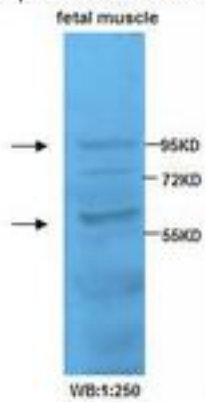
Immunohistochemistry Image:



Human Spleen: Formalin-Fixed, Paraffin-Embedded (FFPE)

Western Blot Image:

This antibody identifies two bands of approximately 95 and 60KD in fetal muscle lysates. The 60 KD band may represent soluble form-



Requested From:

Japan

Laboratory Reagent For In Vitro Research Use Only

Not for resale without prior written consent from LifeSpan BioSciences, Inc.

Created on 9/24/2014

© 2014 LifeSpan BioSciences