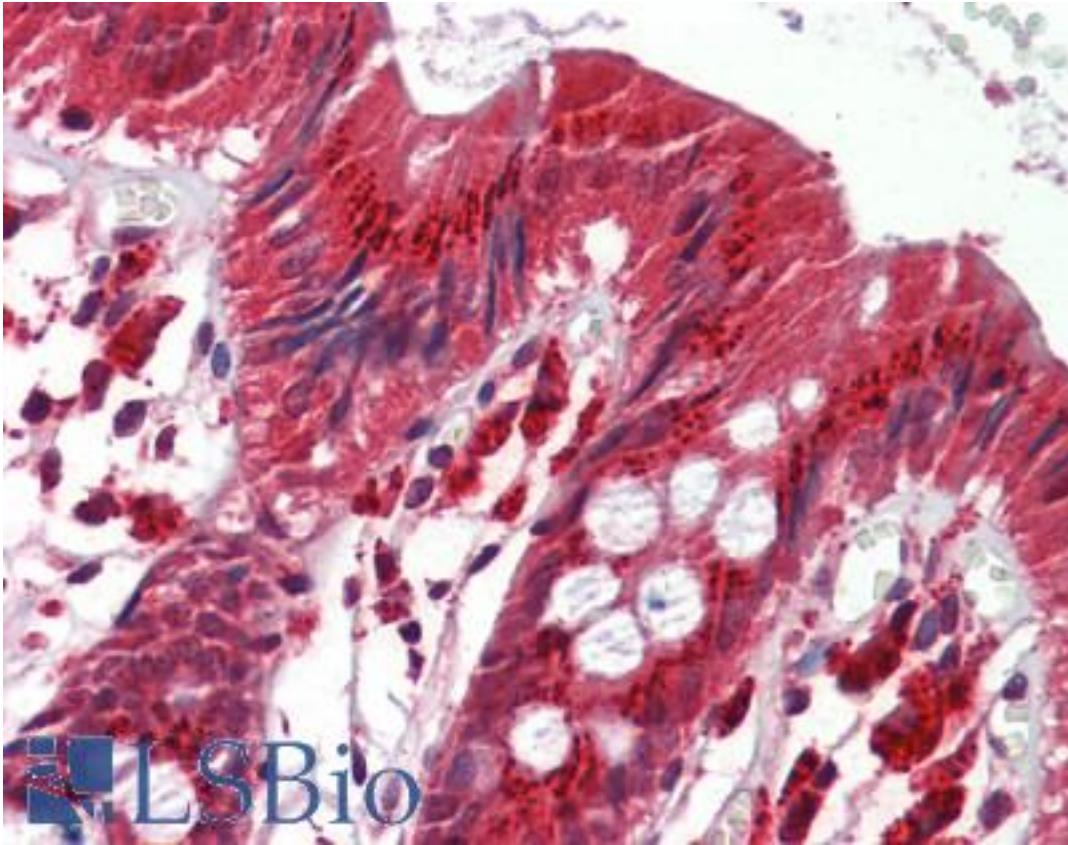


ITGB1 / Integrin Beta 1 / CD29 Rabbit anti-Human Polyclonal Antibody - LS-B9378 - LSBio	
<b>CatalogID:</b>	LS-B9378
<b>Validation:</b>	This antibody replaces catalog number LS-C137443. It has been validated for use in the following assays: IHC-P.
<b>Target:</b>	integrin, beta 1 (fibronectin receptor, beta polypeptide, antigen CD29 includes MDF2, MSK12) (ITGB1)
<b>Synonyms:</b>	ITGB1 Antibody, CD29 Antibody, CD29 antigen Antibody, Integrin beta-1 Antibody, MDF2 Antibody, MSK12 Antibody, Integrin VLA-4 beta subunit Antibody, VLA-BETA Antibody, VLAB Antibody, Beta 1 integrin Antibody, FNRB Antibody, GPIIA Antibody, Integrin Beta 1 Antibody, VLA-4 subunit beta Antibody
<b>Family / Subfamily:</b>	Integrin / not assigned-Integrin
<b>Host</b>	ITGB1 antibody was produced in Rabbit
<b>Clonality:</b>	Polyclonal
<b>Isotype:</b>	IgG
<b>Immunogen Species:</b>	ITGB1 / Integrin Beta 1 / CD29 antibody was raised against Human
<b>Antigen Type:</b>	Synthetic peptide
<b>Immunogen:</b>	ITGB1 / Integrin Beta 1 / CD29 antibody was raised against synthetic peptide derived from Human CD29
<b>Specificity:</b>	This Polyclonal antibody is directed against human CD29 protein. The product was purified from serum by protein A chromatography. Expect reactivity with human CD29. Cross-reactivity with CD29 from other sources has not been determined.
<b>Reactivity:</b>	Human
<b>Purification:</b>	Affinity purified
<b>Presentation:</b>	PBS, pH 7.4, 0.02% sodium azide
<b>Recommended Storage:</b>	Store at -20°C for up to one year.
<b>Uses:</b>	IHC - Paraffin (5 µg/ml), Western blot (1:1000 - 1:4000) (Optimal dilution to be determined by the researcher)
<b>Size:</b>	50 µl
<b>Concentration:</b>	1 mg/ml

**Immunohistochemistry Image:**



Human Colon: Formalin-Fixed, Paraffin-Embedded (FFPE)

**Requested From:**

Japan

Laboratory Reagent For In Vitro Research Use Only

Not for resale without prior written consent from LifeSpan BioSciences, Inc.

Created on 9/24/2014

© 2014 LifeSpan BioSciences