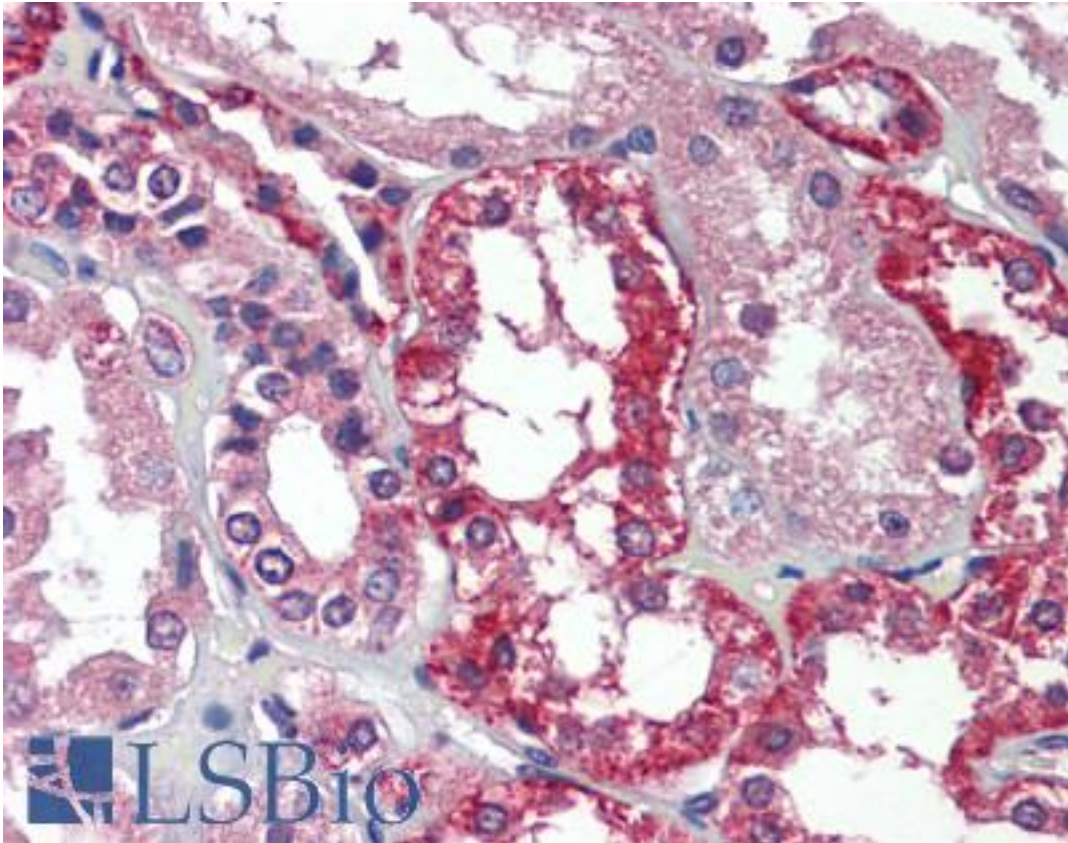


**AGPS Rabbit anti-Human Polyclonal Antibody - LS-B9377 - LSBio**

<b>CatalogID:</b>	LS-B9377
<b>Validation:</b>	This antibody replaces catalog number LS-C137224. It has been validated for use in the following assays: IHC-P.
<b>Target:</b>	alkylglycerone phosphate synthase (AGPS)
<b>Synonyms:</b>	AGPS Antibody, ALDHPSY Antibody, ADAP-S Antibody, ADPS Antibody, Alkyl-DHAP synthase Antibody, Aging-associated protein 5 Antibody, ADAS Antibody, ADHAPS Antibody
<b>Host</b>	AGPS antibody was produced in Rabbit
<b>Clonality:</b>	Polyclonal
<b>Isotype:</b>	IgG
<b>Immunogen Species:</b>	AGPS antibody was raised against Human
<b>Antigen Type:</b>	Recombinant protein
<b>Immunogen:</b>	AGPS antibody was raised against recombinant protein
<b>Reactivity:</b>	Human, Rat
<b>Purification:</b>	Affinity purified
<b>Presentation:</b>	PBS, pH 7.4, 0.02% sodium azide
<b>Recommended Storage:</b>	Store at -20°C for up to one year.
<b>Uses:</b>	IHC - Paraffin (5 µg/ml), Western blot (Optimal dilution to be determined by the researcher)
<b>Size:</b>	50 µl
<b>Concentration:</b>	1 mg/ml

**Immunohistochemistry Image:**



Human Kidney: Formalin-Fixed, Paraffin-Embedded (FFPE)

**Western Blot Image:**

**HepG2 HeLa MCF-7 SW480**



— 95KD Western Blot  
— 72KD analysis of HepG2,  
— 55KD HeLa, MCF-7 and  
— 43KD SW480 cell Lysate  
with anti-AGPS  
antibody

**WB 1:500**

Requested From:

Japan

Laboratory Reagent For In Vitro Research Use Only

Not for resale without prior written consent from LifeSpan BioSciences, Inc.

Created on 9/24/2014

© 2014 LifeSpan BioSciences