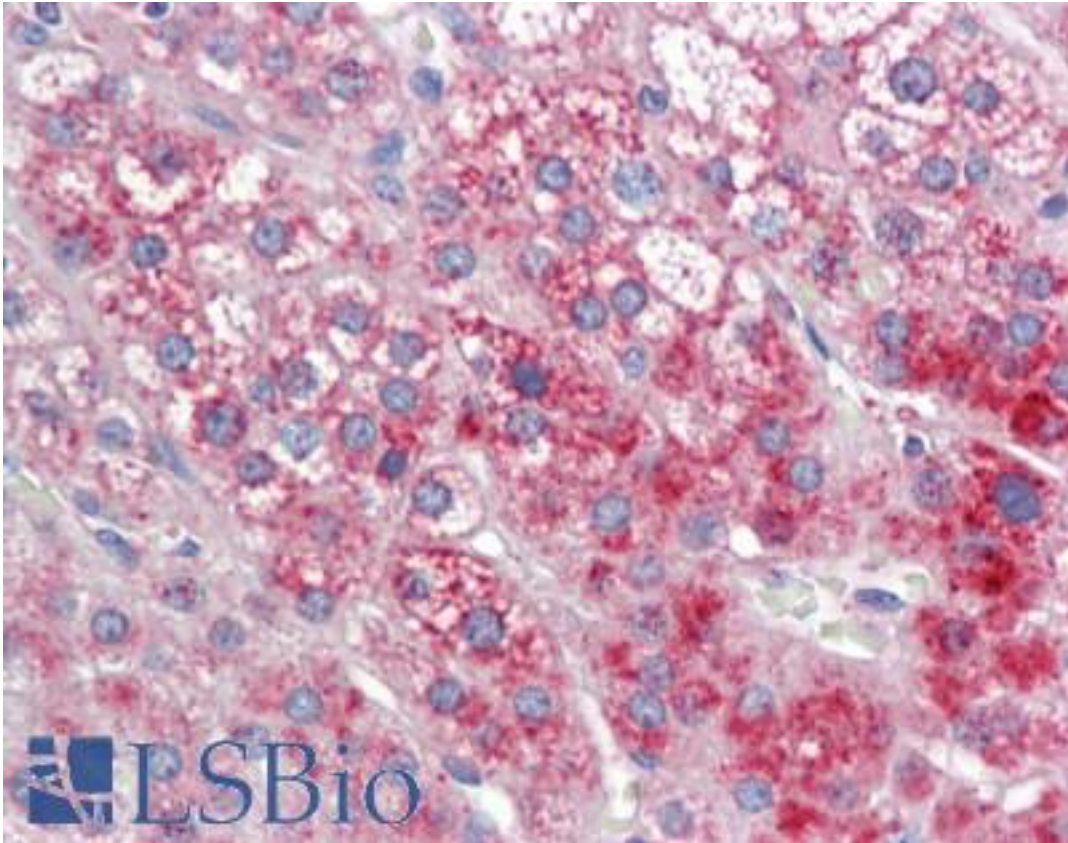


**DCP2 Rabbit anti-Human Polyclonal Antibody - LS-B9375 - LSBio**

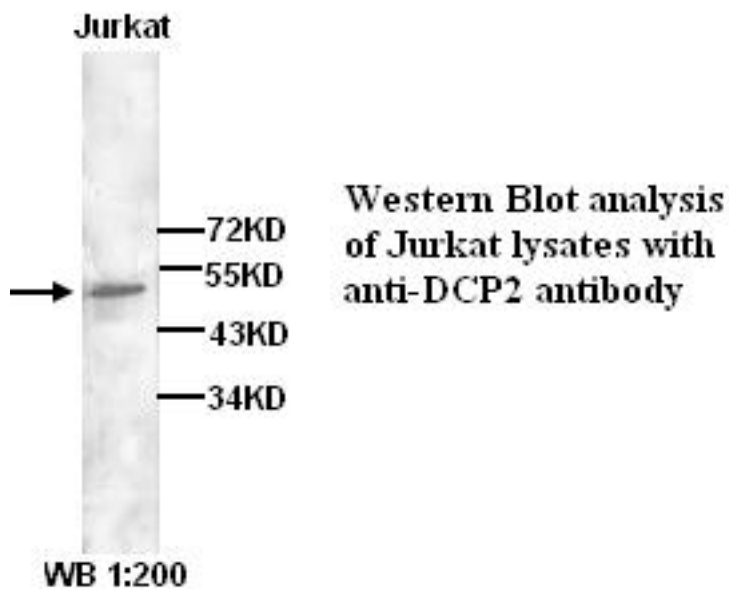
<b>CatalogID:</b>	LS-B9375
<b>Validation:</b>	This antibody replaces catalog number LS-C136940. It has been validated for use in the following assays: IHC-P.
<b>Target:</b>	decapping mRNA 2 (DCP2)
<b>Synonyms:</b>	DCP2 Antibody, MRNA-decapping enzyme 2 Antibody, Nudix motif 20 Antibody, NUDT20 Antibody, HDpc Antibody, M7GpppN-mRNA hydrolase Antibody
<b>Host</b>	DCP2 antibody was produced in Rabbit
<b>Clonality:</b>	Polyclonal
<b>Isotype:</b>	IgG
<b>Immunogen Species:</b>	DCP2 antibody was raised against Human
<b>Antigen Type:</b>	Synthetic peptide - KLH conjugated
<b>Immunogen:</b>	DCP2 antibody was raised against synthetic peptide conjugated to KLH
<b>Specificity:</b>	Not yet tested in other species.
<b>Reactivity:</b>	Human, Mouse, Rat
<b>Purification:</b>	Affinity purified
<b>Presentation:</b>	Supplied as a liquid PBS, pH 7.4, with 0.02% Sodium Azide
<b>Recommended Storage:</b>	Store at -20°C for up to one year.
<b>Uses:</b>	IHC - Paraffin (1:100), Western blot (1:200 - 1:500), ELISA (1:1000 - 1:5000) (Optimal dilution to be determined by the researcher)
<b>Size:</b>	50 µl

**Immunohistochemistry Image:**



Human Adrenal: Formalin-Fixed, Paraffin-Embedded (FFPE)

**Western Blot Image:**



Requested From:

Japan

Laboratory Reagent For In Vitro Research Use Only

Not for resale without prior written consent from LifeSpan BioSciences, Inc.

Created on 9/24/2014

© 2014 LifeSpan BioSciences