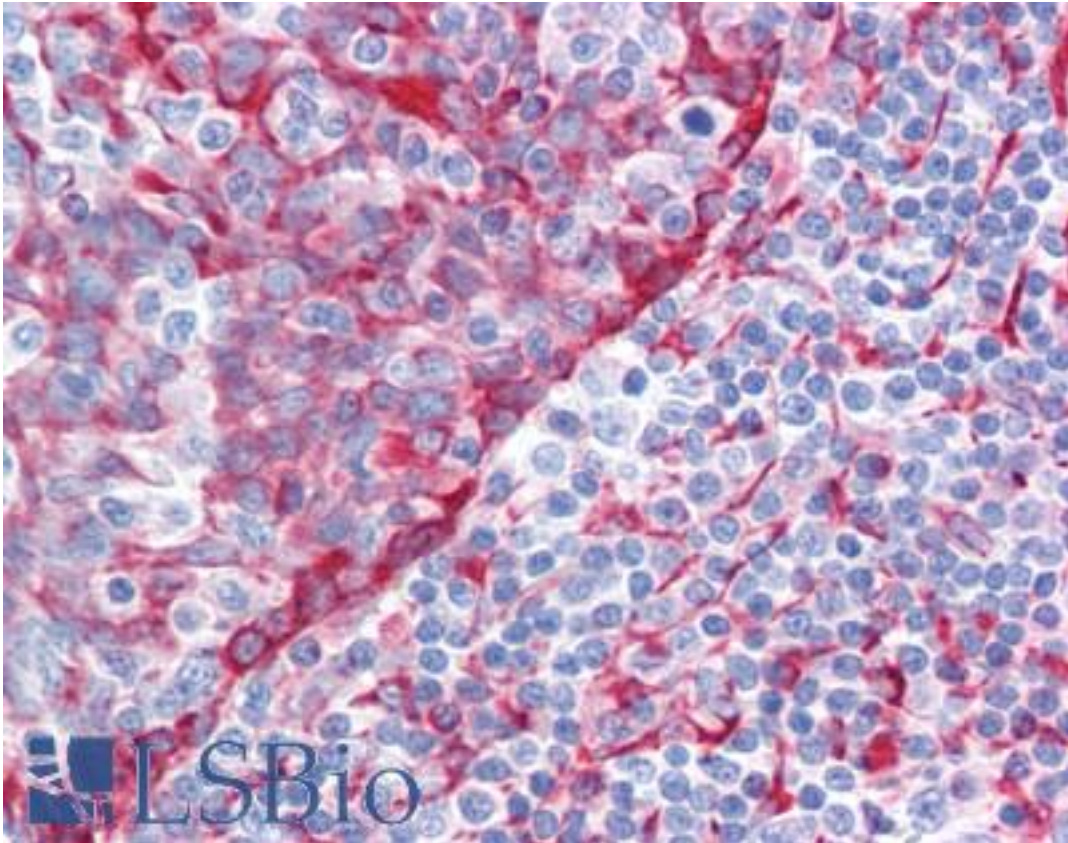


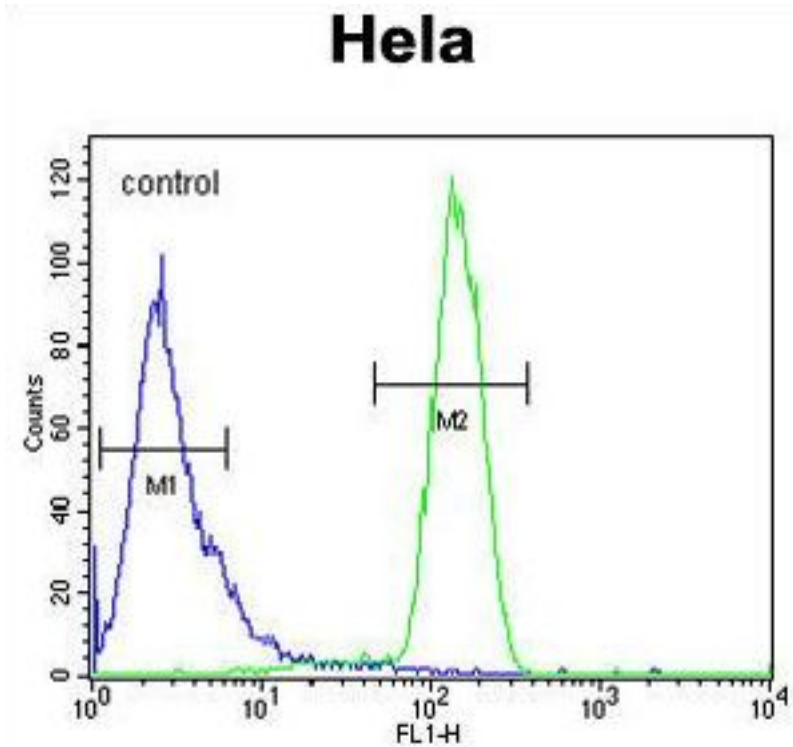
TMEM173 / STING Rabbit anti-Human Polyclonal (aa318-348) Antibody - LS-B9374 - LSBio	
CatalogID:	LS-B9374
Validation:	This antibody replaces catalog number LS-C161932. It has been validated for use in the following assays: IHC-P.
Target:	transmembrane protein 173 (TMEM173)
Synonyms:	TMEM173 Antibody, ERIS Antibody, MITA Antibody, HSTING Antibody, Transmembrane protein 173 Antibody, HMITA Antibody, Mediator of IRF3 activation Antibody, MPYS Antibody, NET23 Antibody, STING Antibody
Host	TMEM173 antibody was produced in Rabbit
Clonality:	Polyclonal
Immunogen Species:	TMEM173 / STING antibody was raised against Human
Antigen Type:	Synthetic peptide
Immunogen:	TMEM173 / STING antibody was raised against kLH-conjugated synthetic peptide from C-terminal region of human TM173.
Specificity:	Human TMEM173 / STING
Epitope:	aa318-348
Reactivity:	Human, Mouse
Purification:	Immunoaffinity purified
Presentation:	PBS, 0.09% sodium azide
Recommended Storage:	Maintain refrigerated at 2-8°C for up to 6 months. For long term storage store at -20°C.
Uses:	IHC - Paraffin (5 µg/ml), Western blot (1:1000), Flow Cytometry (1:10 - 1:50) (Optimal dilution to be determined by the researcher)
Size:	200 µl

Immunohistochemistry Image:



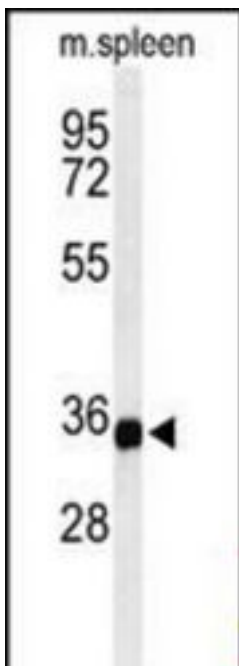
Human Tonsil: Formalin-Fixed, Paraffin-Embedded (FFPE)

Flow Cytometry Image:



TM173 Antibody (C-term) flow cytometry of HeLa cells (right histogram) compared to a negative control cell (left histogram). FITC-conjugated goat-anti-rabbit secondary antibodies were used for the analysis.

Western Blot Image:



Western blot of TM173 Antibody (C-term) in mouse spleen tissue lysates (35 ug/lane). TM173 (arrow) was detected using the purified Pab.

Requested From:	Japan
Laboratory Reagent For In Vitro Research Use Only	
Not for resale without prior written consent from LifeSpan BioSciences, Inc.	
Created on 9/24/2014	
© 2014 LifeSpan BioSciences	