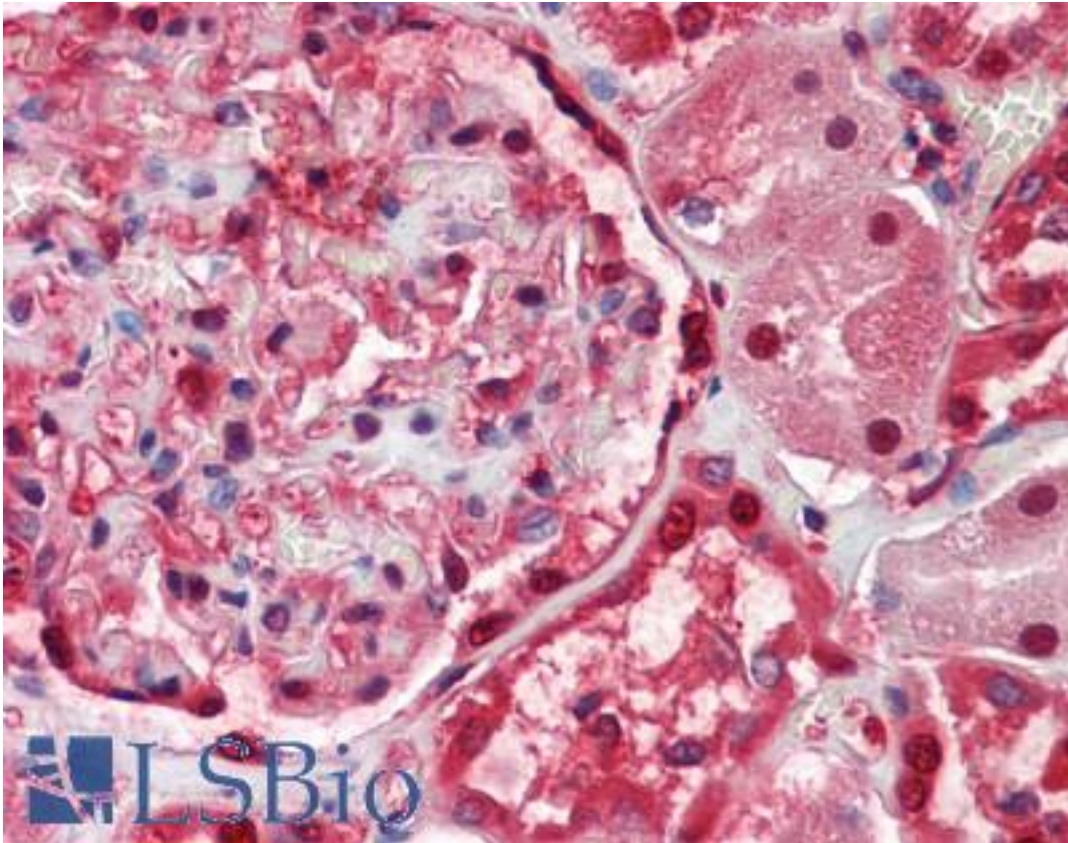


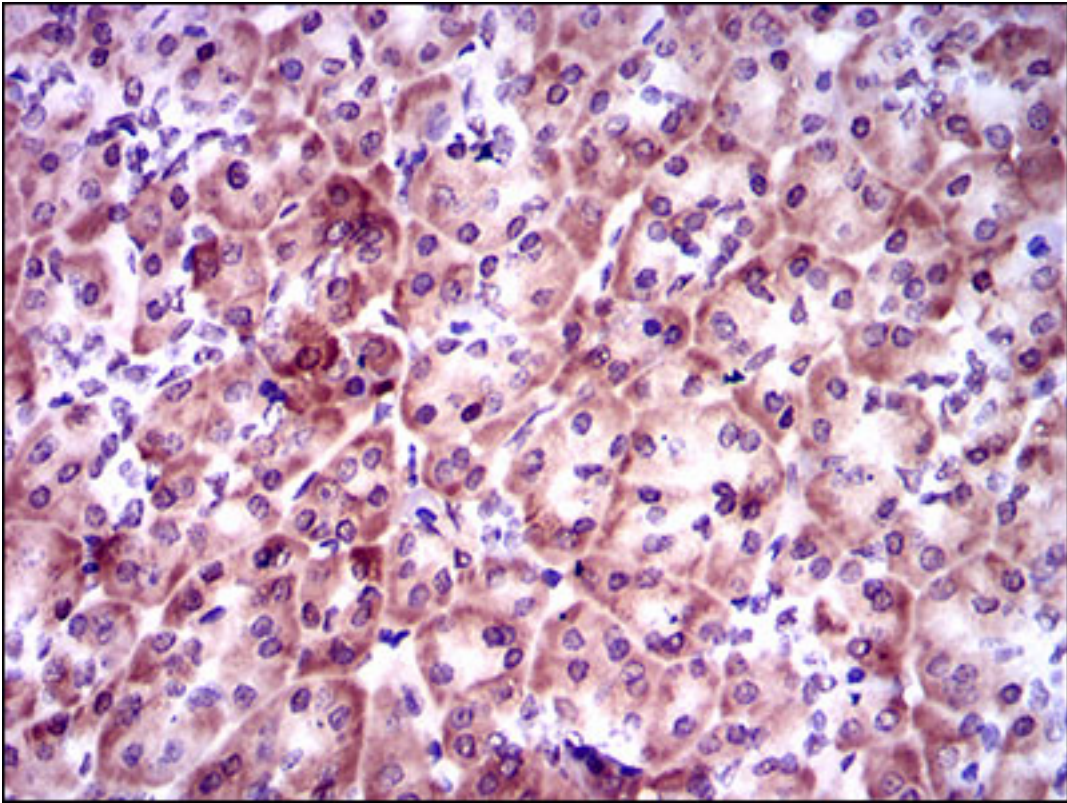
PSAP / Prosaposin Mouse anti-Human Monoclonal (4D5F4) Antibody - LS-B9363 - LSBio	
CatalogID:	LS-B9363
Validation:	This antibody replaces catalog number LS-C169156. It has been validated for use in the following assays: IHC-P.
Target:	prosaposin (PSAP)
Synonyms:	PSAP Antibody, Cerebroside sulfate activator Antibody, GLBA Antibody, Proactivator polypeptide Antibody, Prosaposin Antibody, SAP1 Antibody
Host	PSAP antibody was produced in Mouse
Clonality:	Monoclonal
Isotype:	IgG1
Clone Name:	4D5F4
Immunogen Species:	PSAP / Prosaposin antibody was raised against Human
Antigen Type:	Recombinant protein
Immunogen:	PSAP / Prosaposin antibody was raised against purified recombinant fragment of human PSAP (aa325-524) expressed in E. coli.
Specificity:	Human Prosaposin
Reactivity:	Human
Purification:	Purified
Presentation:	PBS, 0.05% sodium azide, 0.05% protein stabilizer
Recommended Storage:	Long term: -20°C; Short term: +4°C; Avoid freeze-thaw cycles.
Uses:	IHC - Paraffin (5 µg/ml), ICC (1:50 - 1:500), Immunofluorescence (1:500), Western blot (1:500 - 1:2000), Flow Cytometry (1:200 - 1:400), ELISA (1:10000) (Optimal dilution to be determined by the researcher)
Size:	50 µg
Concentration:	1 mg/ml

Immunohistochemistry Image:



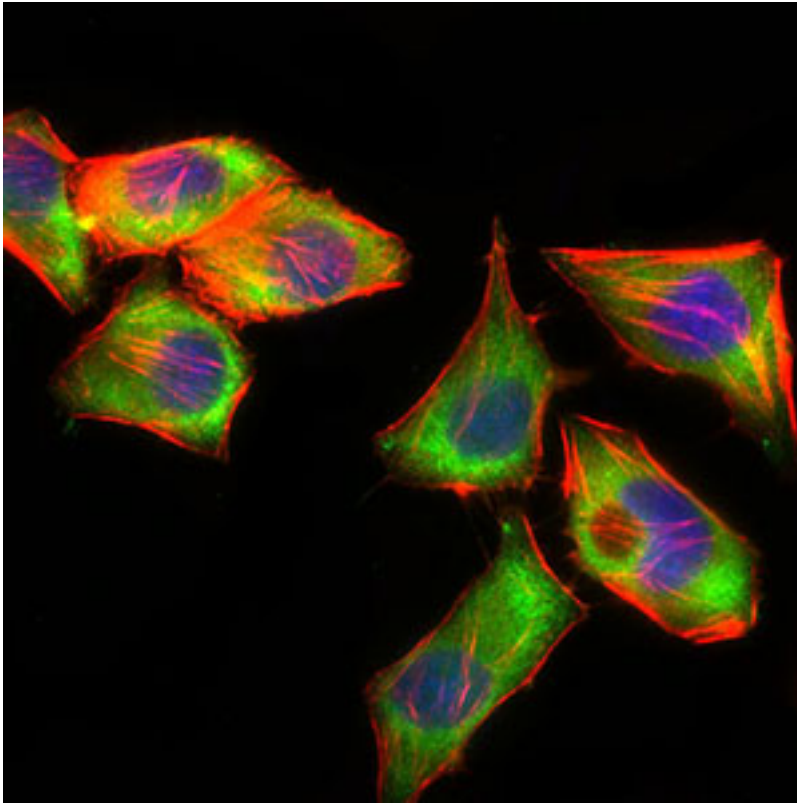
Human Kidney: Formalin-Fixed, Paraffin-Embedded (FFPE)

Immunohistochemistry Image:



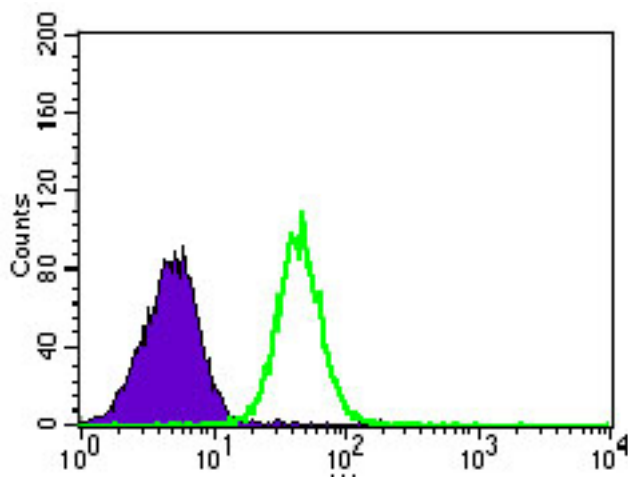
IHC of paraffin-embedded pancreas tissues using PSAP mouse mAb with DAB staining.

Immunofluorescence Image:



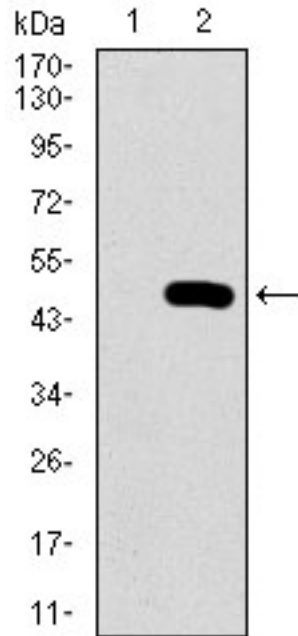
Immunofluorescence of HepG2 cells using PSAP mouse mAb (green). Blue: DRAQ5 fluorescent DNA dye. Red: Actin filaments have been labeled with Alexa Fluor-555 phalloidin.

Flow Cytometry Image:



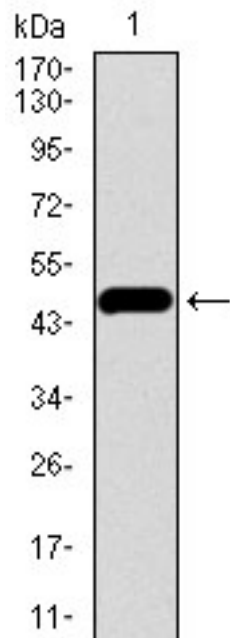
Flow cytometry of HeLa cells using PSAP mouse mAb (green) and negative control (purple).

Western Blot Image:



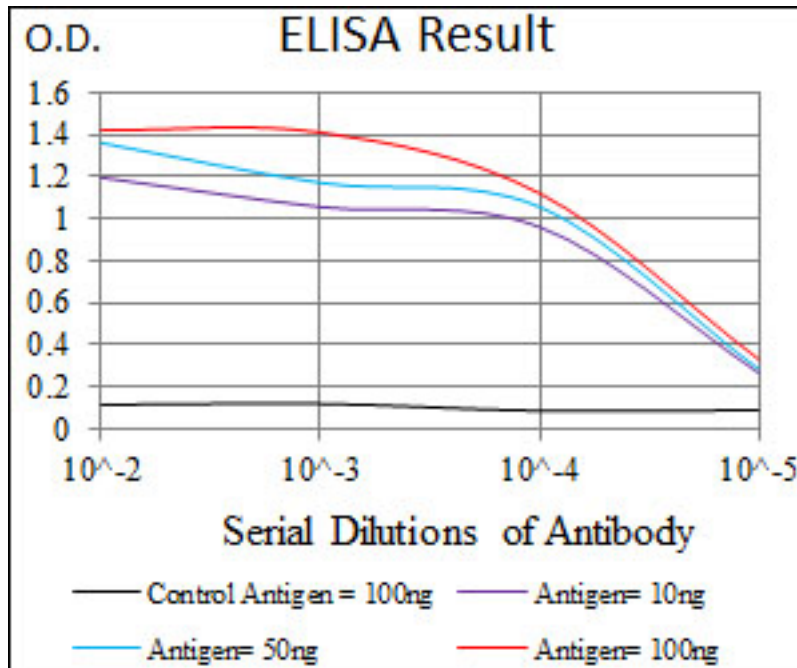
Western blot of PSAP mAb against HEK293 (1) and PSAP (AA: 325-524)-hlgGfc transfected HEK293 (2) cell lysate.

Western Blot Image:



Western blot of PSAP mAb against human PSAP recombinant protein. (Expected MW is 47.8 kDa)

ELISA Image:



Red: Control Antigen (100ng); Purple: Antigen (10ng); Green: Antigen (50ng); Blue: Antigen (100ng);

Requested From:

Japan

Laboratory Reagent For In Vitro Research Use Only

Not for resale without prior written consent from LifeSpan BioSciences, Inc.

Created on 9/24/2014

© 2014 LifeSpan BioSciences