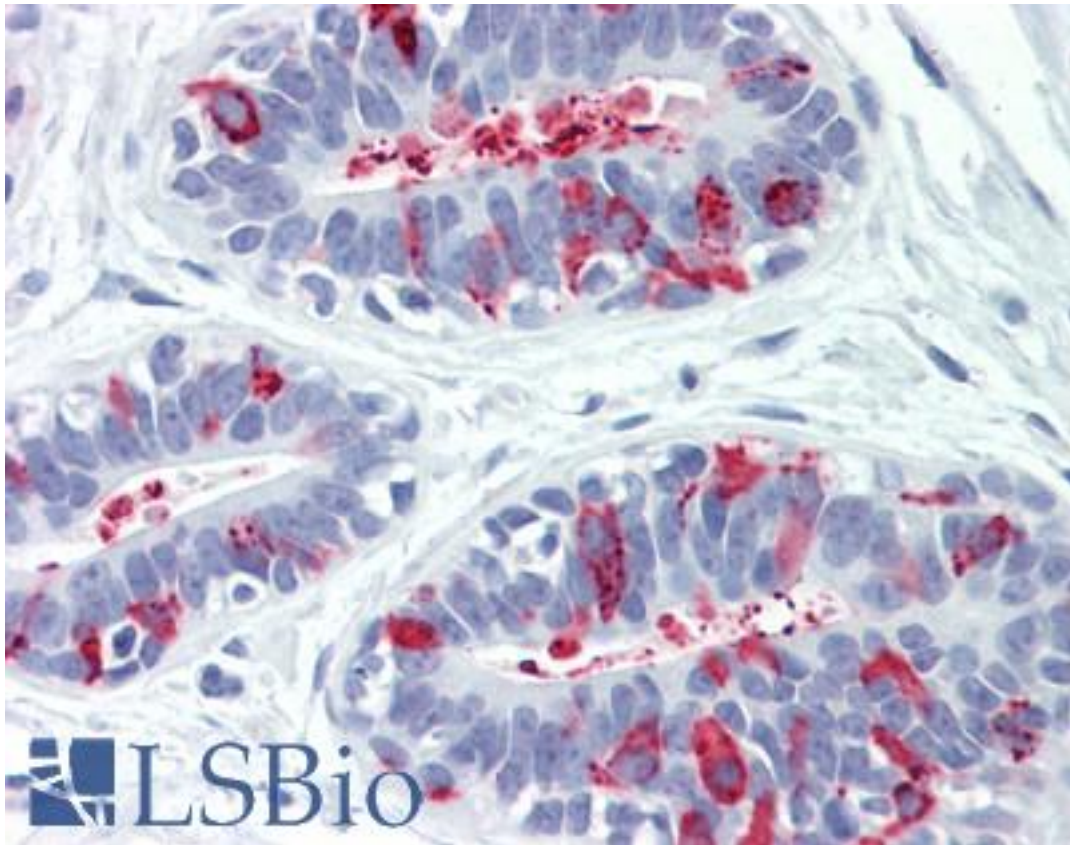


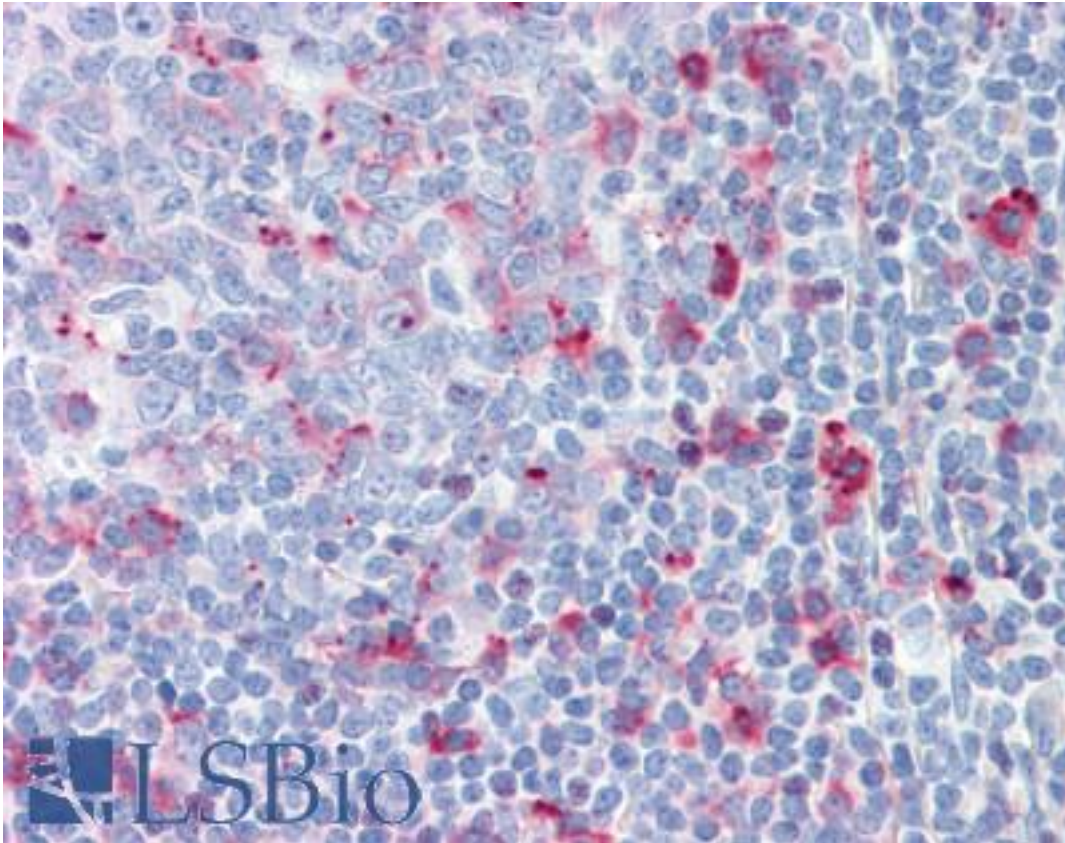
CTSC / Cathepsin C / JP Mouse anti-Human Monoclonal Antibody - LS-B9359 - LSBio	
CatalogID:	LS-B9359
Validation:	This antibody replaces catalog number LS-C137510. It has been validated for use in the following assays: IHC-P.
Target:	cathepsin C (CTSC)
Synonyms:	CTSC Antibody, Cathepsin J Antibody, Dipeptidyl peptidase 1 Antibody, Dipeptidyl peptidase I Antibody, DPP-I Antibody, Dipeptidyl transferase Antibody, Dipeptidyl-peptidase I Antibody, CPPI Antibody, DPPI Antibody, DPP1 Antibody, HMS Antibody, JP Antibody, PDON1 Antibody, PLS Antibody, JPD Antibody, Cathepsin C Antibody, PALS Antibody
Family / Subfamily:	Protease / Cysteine C1
Host	CTSC antibody was produced in Mouse
Clonality:	Monoclonal
Isotype:	IgG2b
Immunogen Species:	CTSC / Cathepsin C / JP antibody was raised against Human
Antigen Type:	Recombinant protein
Immunogen:	CTSC / Cathepsin C / JP antibody was raised against recombinant protein corresponding to full length DPPI
Specificity:	Anti-DPPI recognizes recombinant protein DPPI.
Reactivity:	Human
Purification:	Affinity purified
Presentation:	Citrate-Tris-HCl buffer, pH 7.0, 0.02% Proclin 300
Recommended Storage:	Store at -20°C for up to one year.
Usage Summary:	Western blot with recombinant protein only, not yet tested for detection of endogenous CTSC.
Uses:	IHC - Paraffin (1:50), Western blot (1:1000), ELISA (Optimal dilution to be determined by the researcher)
Size:	50 µl

Immunohistochemistry Image:



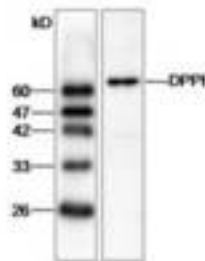
Human Breast: Formalin-Fixed, Paraffin-Embedded (FFPE)

Immunohistochemistry Image:



Human Tonsil: Formalin-Fixed, Paraffin-Embedded (FFPE)

Western Blot Image:



Requested From:

Japan

Laboratory Reagent For In Vitro Research Use Only

Not for resale without prior written consent from LifeSpan BioSciences, Inc.

Created on 9/24/2014

© 2014 LifeSpan BioSciences