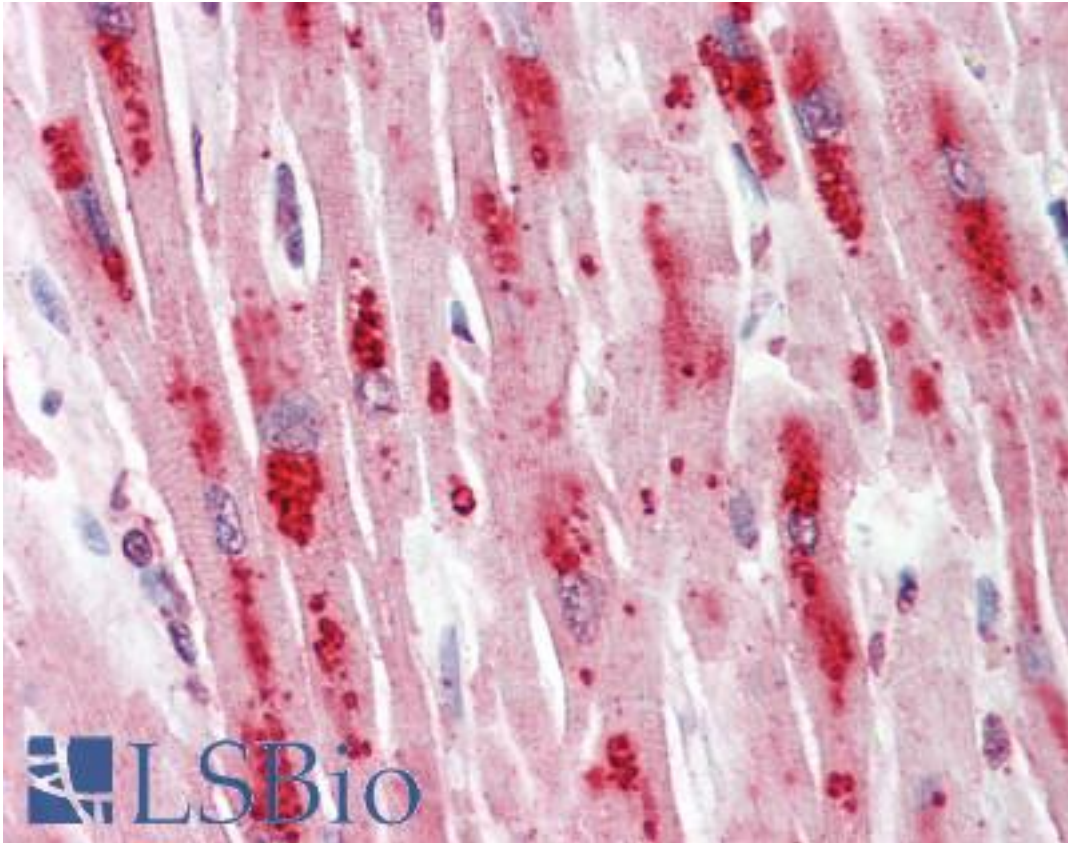


NOTCH1 Mouse anti-Human Monoclonal (A6) Antibody - LS-B9351 - LSBio

CatalogID:	LS-B9351
Validation:	This antibody replaces catalog number LS-C87707. It has been validated for use in the following assays: IHC-P.
Target:	notch 1 (NOTCH1)
Synonyms:	NOTCH1 Antibody, Notch 1 Antibody, TAN1 Antibody
Host	NOTCH1 antibody was produced in Mouse
Clonality:	Monoclonal
Isotype:	IgG2b
Clone Name:	A6
Immunogen Species:	NOTCH1 antibody was raised against Human
Immunogen:	NOTCH1 antibody was raised against recombinant protein encoding the ligand binding region of human Notch-1.
Specificity:	Ligand binding region
Reactivity:	Human, Mouse
Purification:	Protein A purified
Presentation:	10mM PBS, pH 7.4, with 0.2% BSA and 0.09% Sodium Azide
Recommended Storage:	Stable for 24 months when stored at 2-8°C.
Uses:	IHC - Paraffin (10 µg/ml), Flow Cytometry (Optimal dilution to be determined by the researcher)
Size:	250 µl
Concentration:	200 µg/ml

Immunohistochemistry Image:



Human Heart: Formalin-Fixed, Paraffin-Embedded (FFPE)

Requested From:

Japan

Laboratory Reagent For In Vitro Research Use Only

Not for resale without prior written consent from LifeSpan BioSciences, Inc.

Created on 9/24/2014

© 2014 LifeSpan BioSciences