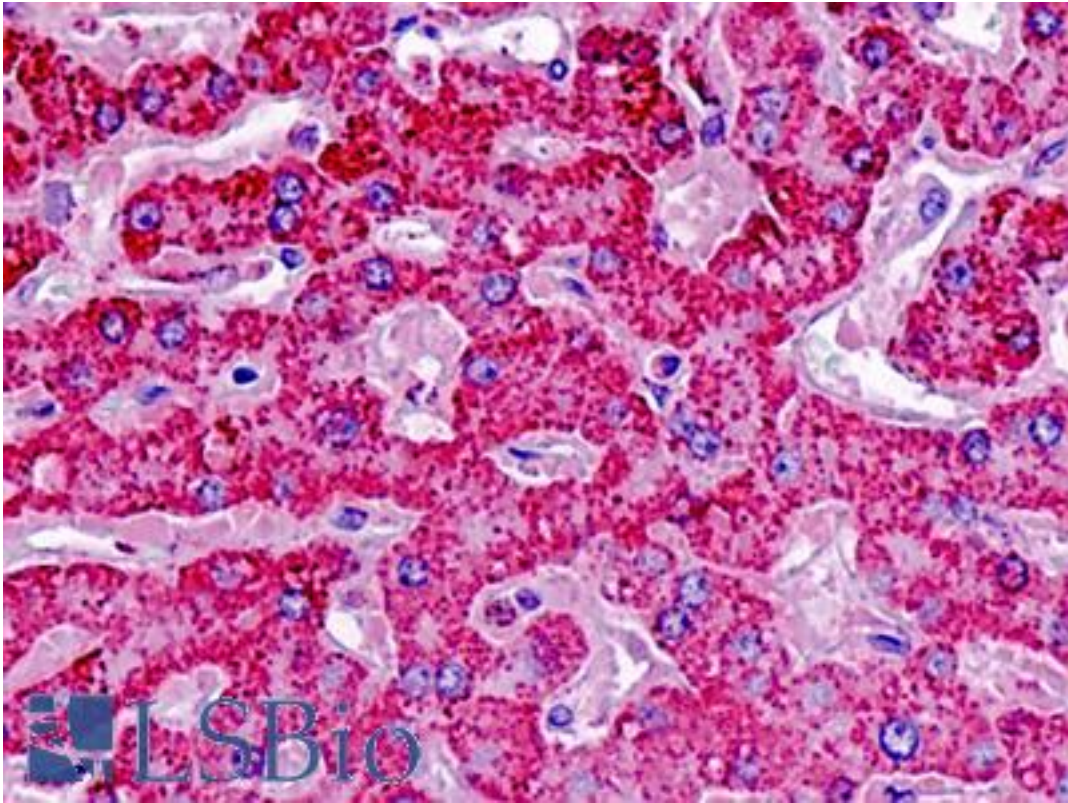


SOD1 / SOD Rabbit Polyclonal Antibody - LS-B9346 - LSBio

CatalogID:	LS-B9346
Validation:	This antibody replaces catalog number LS-C152965. It has been validated for use in the following assays: IHC-P.
Target:	superoxide dismutase 1, soluble (SOD1)
Synonyms:	SOD1 Antibody, ALS Antibody, ALS1 Antibody, Cu/Zn superoxide dismutase Antibody, HSod1 Antibody, Homodimer Antibody, IPOA Antibody, SOD, soluble Antibody, SOD Antibody, Superoxide dismutase [Cu-Zn] Antibody, Superoxide dismutase 1 Antibody, Indophenoloxidase A Antibody, Superoxide dismutase, cystolic Antibody
Host	SOD1 antibody was produced in Rabbit
Clonality:	Polyclonal
Antigen Type:	Purified protein
Immunogen:	SOD1 / SOD antibody was raised against human Cu/Zn SOD
Specificity:	detects a 23 kDa protein in human (and a 19 kDa protein in other species) on SDS-PAGE immunoblots, corresponding to the molecular mass of Cu/Zn SOD. Positive control: HeLa cell lysate.
Reactivity:	Human, Monkey, Mouse, Rat, Bovine, Dog, Hamster, Pig, Rabbit, Sheep, Xenopus
Purification:	Affinity purified
Presentation:	PBS, pH 7.0, 0.1% sodium azide, 50% glycerol.
Recommended Storage:	Long term: -20°C; Short term: +4°C. Avoid repeat freeze-thaw cycles.
Uses:	IHC - Paraffin (5 µg/ml), Western blot (0.2 µg/ml), Immunoprecipitation (10 µg/ml), ELISA (Optimal dilution to be determined by the researcher)
Size:	50 µl
Concentration:	1 mg/ml

Immunohistochemistry Image:



Human Liver: Formalin-Fixed, Paraffin-Embedded (FFPE)

Requested From:

Japan

Laboratory Reagent For In Vitro Research Use Only

Not for resale without prior written consent from LifeSpan BioSciences, Inc.

Created on 9/24/2014

© 2014 LifeSpan BioSciences