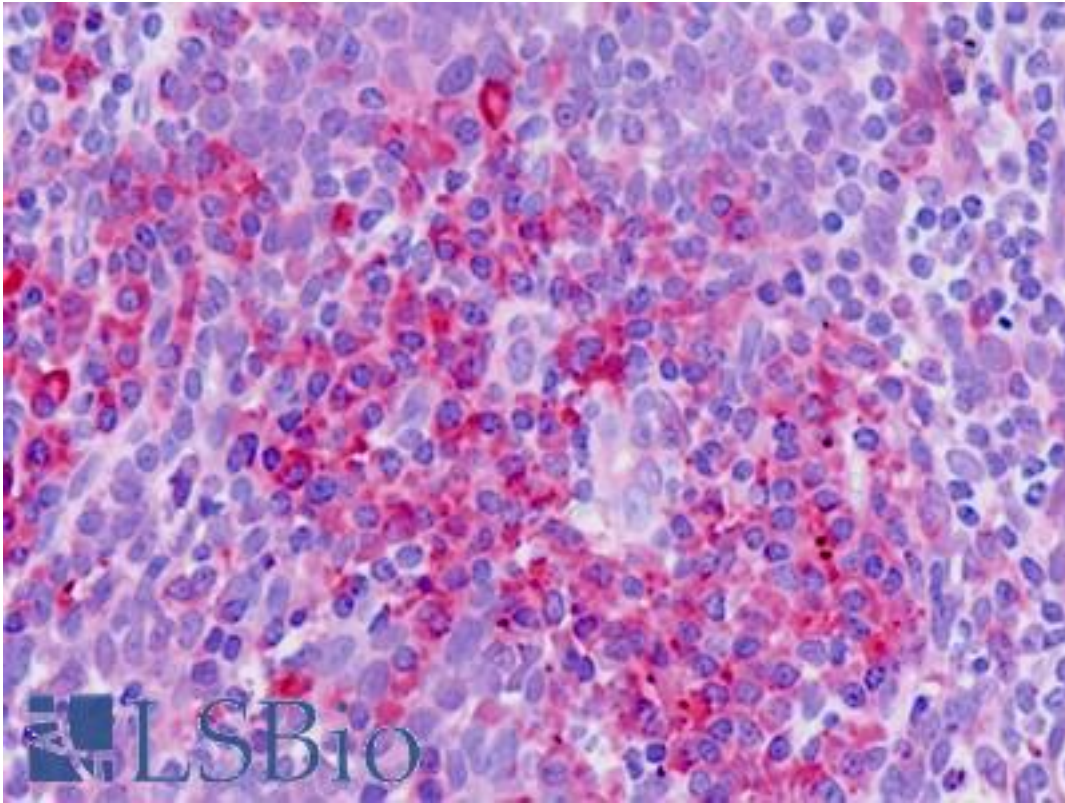


**SLC11A1 / NRAMP Rabbit anti-Human Polyclonal (aa256-285) Antibody - LS-B9344 - LSBio**

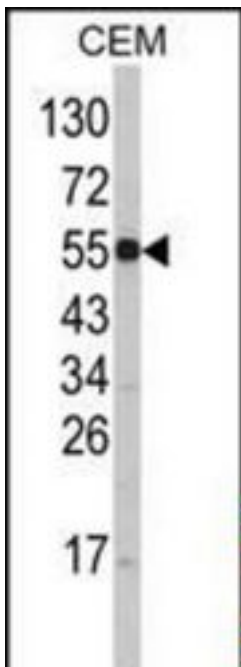
<b>CatalogID:</b>	LS-B9344
<b>Validation:</b>	This antibody replaces catalog number LS-C161123. It has been validated for use in the following assays: IHC-P.
<b>Target:</b>	solute carrier family 11 (proton-coupled divalent metal ion transporter), member 1 (SLC11A1)
<b>Synonyms:</b>	SLC11A1 Antibody, LSH Antibody, NRAMP 1 Antibody, NRAMP Antibody, NRAMP1 Antibody
<b>Family / Subfamily:</b>	Transporter / Natural resistance-associated macrophage protein (NRAMP)
<b>Host</b>	SLC11A1 antibody was produced in Rabbit
<b>Clonality:</b>	Polyclonal
<b>Immunogen Species:</b>	SLC11A1 / NRAMP antibody was raised against Human
<b>Antigen Type:</b>	Synthetic peptide
<b>Immunogen:</b>	SLC11A1 / NRAMP antibody was raised against kLH-conjugated synthetic peptide from internal region of human SLC11A1.
<b>Specificity:</b>	Human NRAMP / SLC11A1
<b>Epitope:</b>	aa256-285
<b>Reactivity:</b>	Human
<b>Purification:</b>	Immunoaffinity purified
<b>Presentation:</b>	PBS, 0.09% sodium azide
<b>Recommended Storage:</b>	Maintain refrigerated at 2-8°C for up to 6 months. For long term storage store at -20°C.
<b>Uses:</b>	IHC - Paraffin (5 µg/ml), Immunofluorescence (1:10 - 1:50), Western blot (1:1000) (Optimal dilution to be determined by the researcher)
<b>Size:</b>	200 µl

**Immunohistochemistry Image:**



Human Tonsil: Formalin-Fixed, Paraffin-Embedded (FFPE)

**Western Blot Image:**



Western blot of SLC11A1 Antibody (Center) in CEM cell line lysates (35 ug/lane). SLC11A1 (arrow) was detected using the purified Pab.

**Requested From:**

Japan

Laboratory Reagent For In Vitro Research Use Only

Not for resale without prior written consent from LifeSpan BioSciences, Inc.

Created on 9/24/2014

© 2014 LifeSpan BioSciences