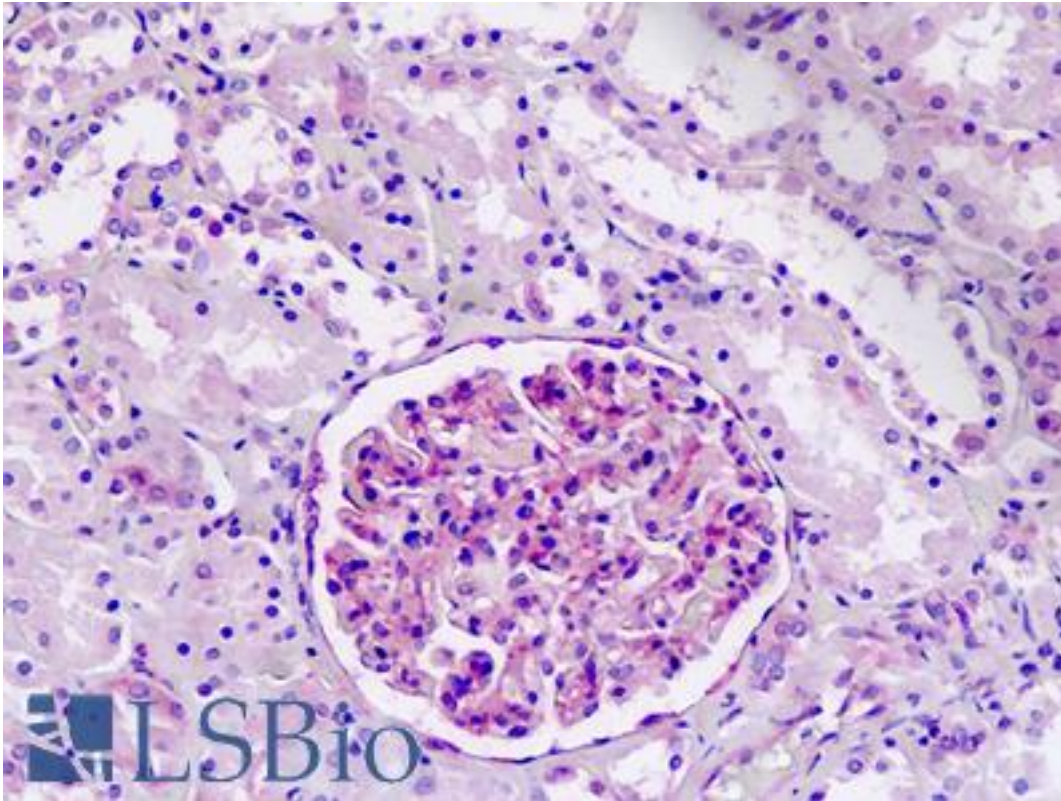


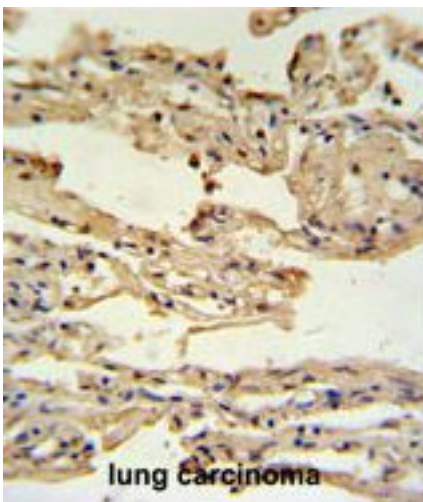
IFITM2 Rabbit anti-Human Polyclonal (aa6-35) Antibody - LS-B9342 - LSBio	
CatalogID:	LS-B9342
Validation:	This antibody replaces catalog number LS-C165127. It has been validated for use in the following assays: IHC-P.
Target:	interferon induced transmembrane protein 2 (IFITM2)
Synonyms:	IFITM2 Antibody, 1-8D Antibody, Dispanin subfamily A member 2c Antibody, DSPA2c Antibody
Host	IFITM2 antibody was produced in Rabbit
Clonality:	Polyclonal
Immunogen Species:	IFITM2 antibody was raised against Human
Antigen Type:	Synthetic peptide
Immunogen:	IFITM2 antibody was raised against kLH-conjugated synthetic peptide from N-terminal region of human IFM2.
Specificity:	Human IFITM2
Epitope:	aa6-35
Reactivity:	Human
Purification:	Immunoaffinity purified
Presentation:	PBS, 0.09% sodium azide
Recommended Storage:	Maintain refrigerated at 2-8°C for up to 6 months. For long term storage store at -20°C.
Uses:	IHC - Paraffin (5 µg/ml), Western blot (1:1000) (Optimal dilution to be determined by the researcher)
Size:	200 µl

Immunohistochemistry Image:



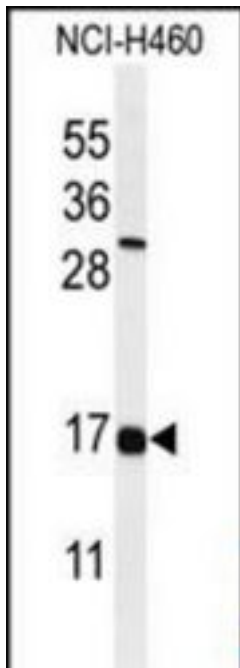
Human Kidney: Formalin-Fixed, Paraffin-Embedded (FFPE)

Immunohistochemistry Image:



IFM2 Antibody (N-term) IHC of formalin fixed and paraffin embedded lung carcinoma followed by peroxidase conjugation of the secondary antibody and DAB staining. This demonstrates the use of the IFM2 Antibody (N-term) for immunohistochemistry.

Western Blot Image:



Western blot of IFITM2 Antibody (N-term) in NCI-H460 cell line lysates (35 ug/lane). IFM2 (arrow) was detected using the purified Pab.

Requested From:

Japan

Laboratory Reagent For In Vitro Research Use Only

Not for resale without prior written consent from LifeSpan BioSciences, Inc.

Created on 9/24/2014

© 2014 LifeSpan BioSciences