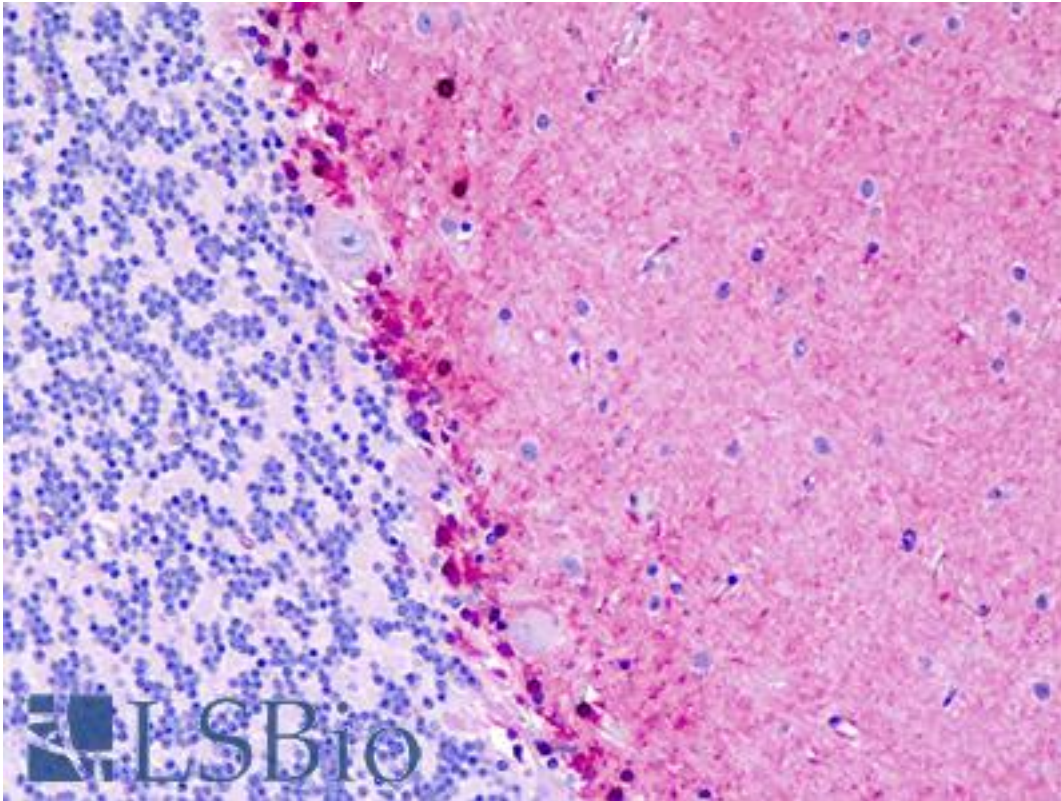


S100B / S100 Rabbit anti-Human Polyclonal (aa27-56) Antibody - LS-B9341 - LSBio

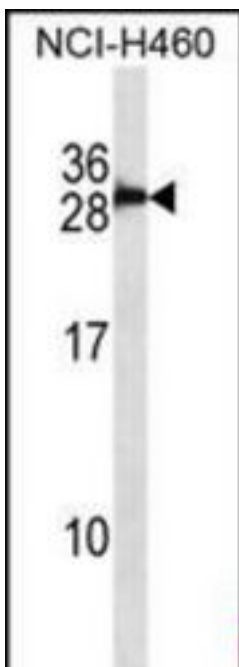
CatalogID:	LS-B9341
Validation:	This antibody replaces catalog number LS-C162832. It has been validated for use in the following assays: IHC-P.
Target:	S100 calcium binding protein B (S100B)
Synonyms:	S100B Antibody, NEF Antibody, Protein S100-B Antibody, S100 Antibody, S100 calcium binding protein B Antibody, S100 calcium-binding protein B Antibody, S100beta Antibody, S-100 protein beta chain Antibody, S-100 protein subunit beta Antibody, S100-B Antibody
Host	S100B antibody was produced in Rabbit
Clonality:	Polyclonal
Immunogen Species:	S100B / S100 antibody was raised against Human
Antigen Type:	Synthetic peptide
Immunogen:	S100B / S100 antibody was raised against kLH-conjugated synthetic peptide from internal region of human S100B/S-100.
Specificity:	Human S100B / S100
Epitope:	aa27-56
Reactivity:	Human
Purification:	Immunoaffinity purified
Presentation:	PBS, 0.09% sodium azide
Recommended Storage:	Maintain refrigerated at 2-8°C for up to 6 months. For long term storage store at -20°C.
Uses:	IHC (10 µg/ml), Western blot (1:1000) (Optimal dilution to be determined by the researcher)
Size:	200 µl

Immunohistochemistry Image:



Human Brain, Cerebellum: Formalin-Fixed, Paraffin-Embedded (FFPE)

Western Blot Image:



S100B/S-100 Antibody (Center) Western blot of NCI-H460 cell line lysates (35 ug/lane). This demonstrates the S100B/S-100 antibody detected the S100B/S-100 protein (arrow).

Requested From:

Japan

Laboratory Reagent For In Vitro Research Use Only

Not for resale without prior written consent from LifeSpan BioSciences, Inc.

Created on 9/24/2014

© 2014 LifeSpan BioSciences