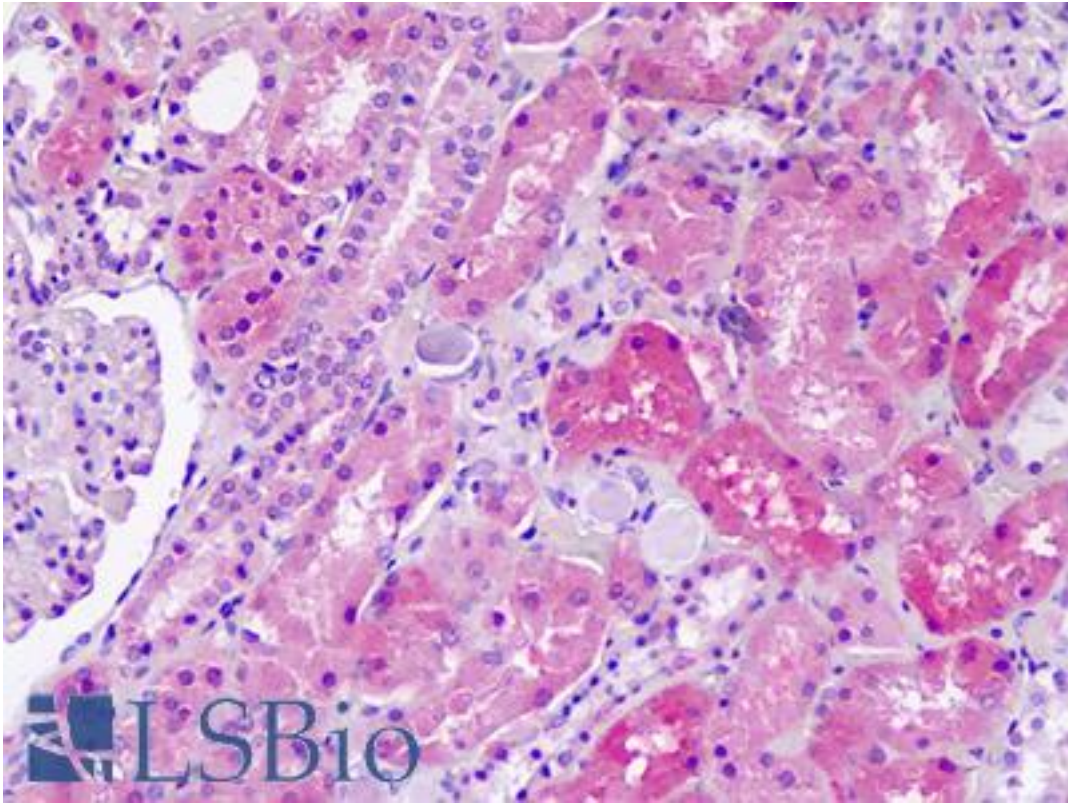


**SLC36A1 Rabbit anti-Human Polyclonal (aa1-30) Antibody - LS-B9339 - LSBio**

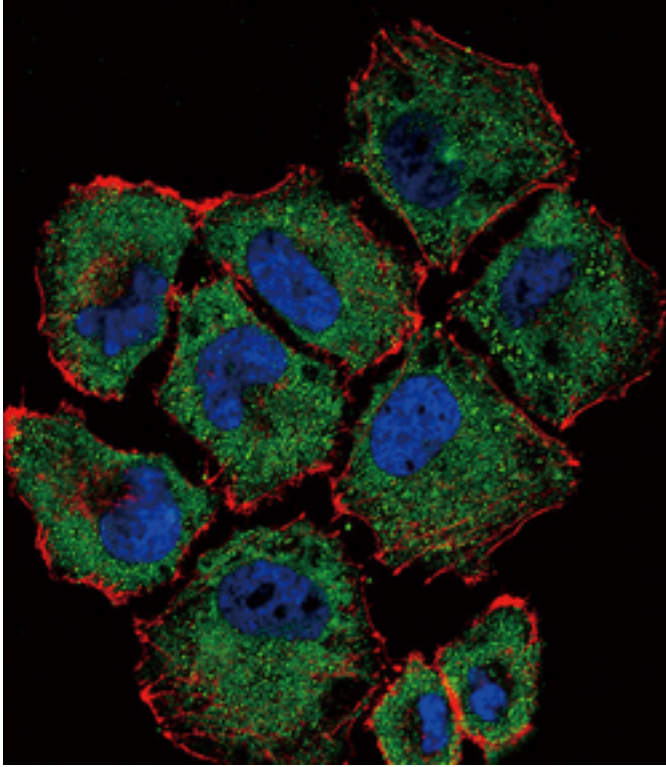
<b>CatalogID:</b>	LS-B9339
<b>Validation:</b>	This antibody replaces catalog number LS-C161228. It has been validated for use in the following assays: IHC-P.
<b>Target:</b>	solute carrier family 36 (proton/amino acid symporter), member 1 (SLC36A1)
<b>Synonyms:</b>	SLC36A1 Antibody, LYAAT-1 Antibody, LYAAT1 Antibody, TRAMD3 Antibody, DCT1 Antibody, HPAT1 Antibody, PAT1 Antibody
<b>Host</b>	SLC36A1 antibody was produced in Rabbit
<b>Clonality:</b>	Polyclonal
<b>Immunogen Species:</b>	SLC36A1 antibody was raised against Human
<b>Antigen Type:</b>	Synthetic peptide
<b>Immunogen:</b>	SLC36A1 antibody was raised against kLH-conjugated synthetic peptide from N-terminal region of human SLC36A1.
<b>Specificity:</b>	Human SLC36A1
<b>Epitope:</b>	aa1-30
<b>Reactivity:</b>	Human
<b>Purification:</b>	Immunoaffinity purified
<b>Presentation:</b>	PBS, 0.09% sodium azide
<b>Recommended Storage:</b>	Maintain refrigerated at 2-8°C for up to 6 months. For long term storage store at -20°C.
<b>Uses:</b>	IHC - Paraffin (5 µg/ml), Immunofluorescence (1:10 - 1:50), Western blot (1:1000), Flow Cytometry (1:10 - 1:50) (Optimal dilution to be determined by the researcher)
<b>Size:</b>	200 µl

**Immunohistochemistry Image:**



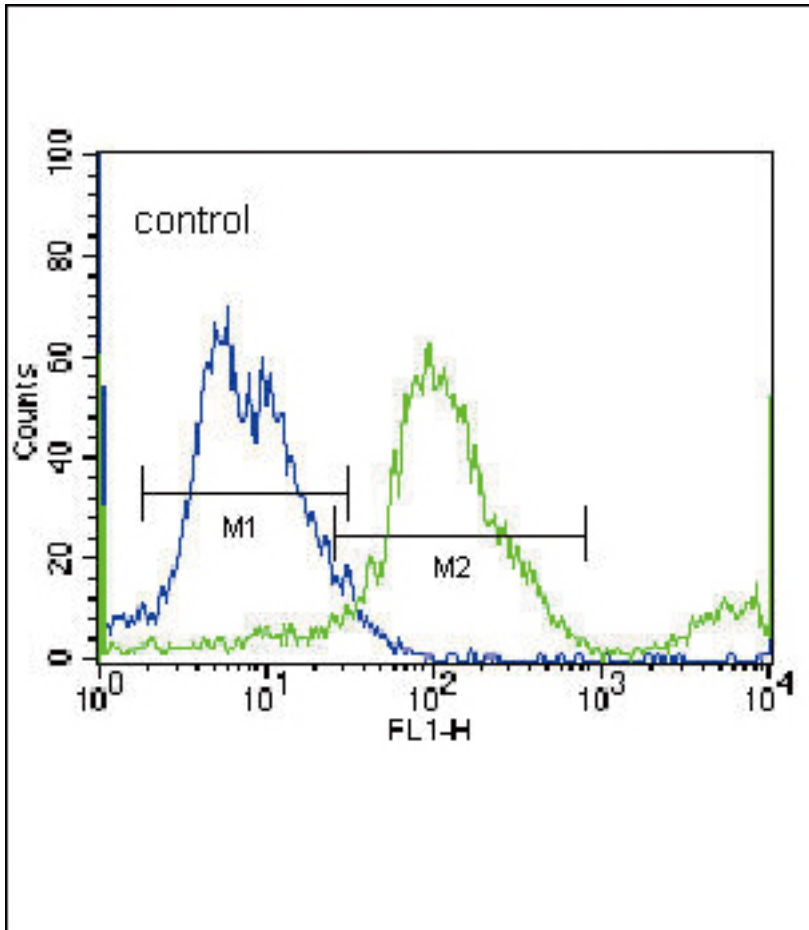
Human Kidney: Formalin-Fixed, Paraffin-Embedded (FFPE)

**Immunofluorescence Image:**



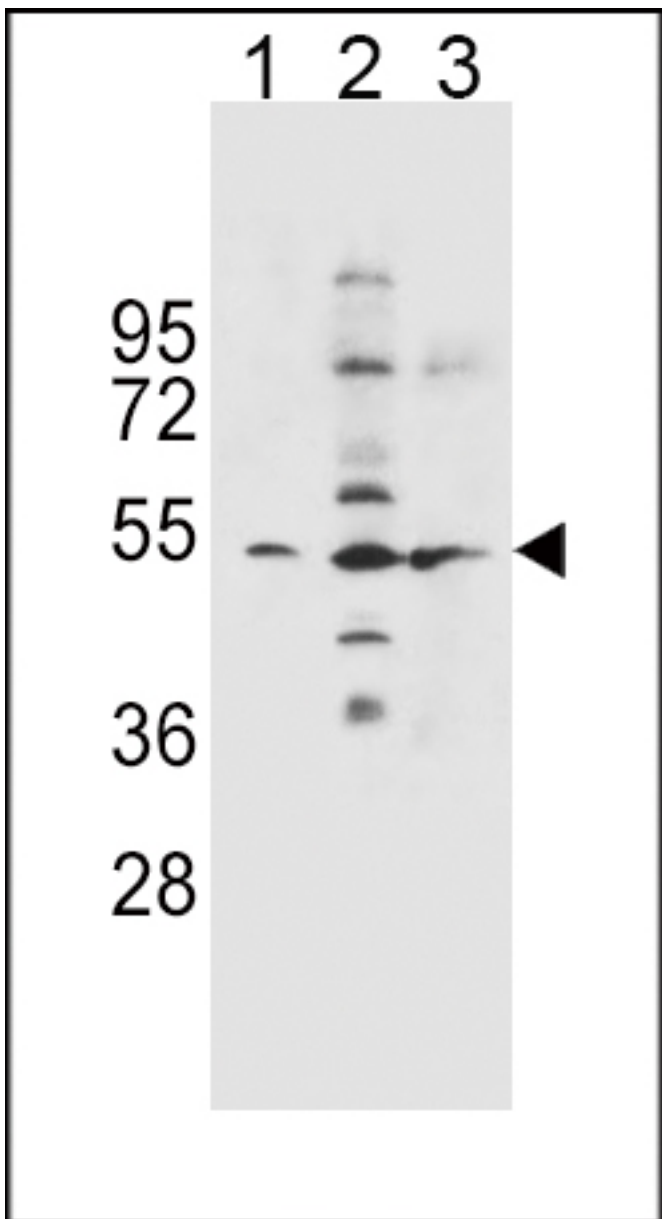
Confocal immunofluorescence of SLC36A1 Antibody (N-term) with NCI-H460 cell followed by Alexa Fluor 488-conjugated goat anti-rabbit IgG (green). Actin filaments have been labeled with Alexa Fluor 555 phalloidin (red). DAPI was used to stain the cell nuclear (blue).

Flow Cytometry Image:



SLC36A1 Antibody (N-term) flow cytometry of NCI-H460 cells (right histogram) compared to a negative control cell (left histogram). FITC-conjugated donkey-anti-rabbit secondary antibodies were used for the analysis.

Western Blot Image:



SLC36A1 Antibody (N-term) western blot analysis in NCI-H460(lane 1),K562(lane 2),A549(lane 3) cell line lysates (35ug/lane). SLC36A1 protein (arrow).

Requested From:

Japan

Laboratory Reagent For In Vitro Research Use Only

Not for resale without prior written consent from LifeSpan BioSciences, Inc.

Created on 9/24/2014

© 2014 LifeSpan BioSciences