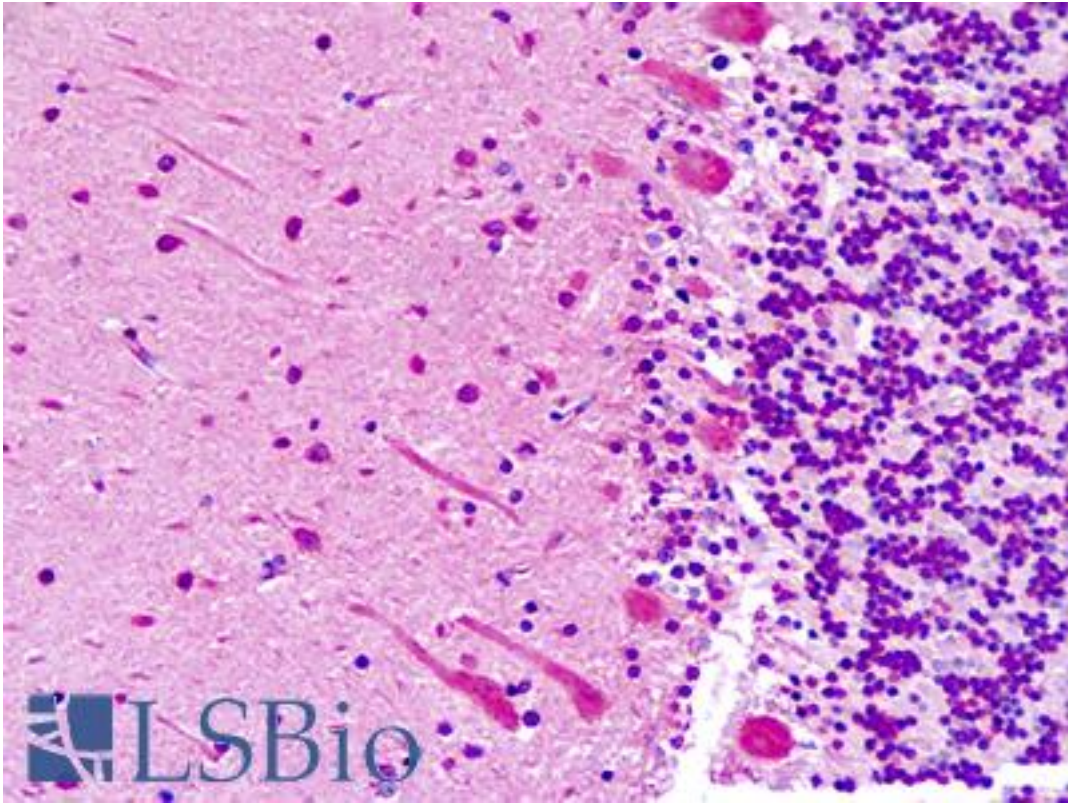


ABI1 / ABI-1 Rabbit anti-Human Polyclonal (aa87-117) Antibody - LS-B9337 - LSBio

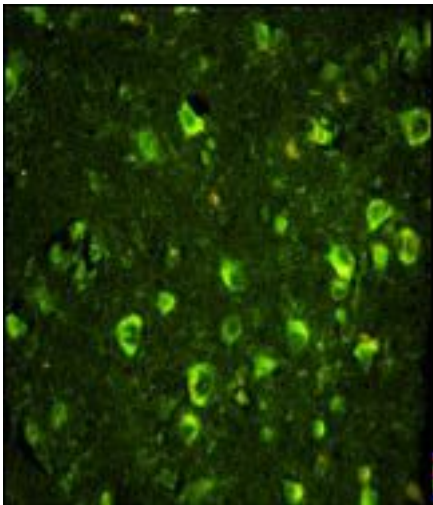
CatalogID:	LS-B9337
Validation:	This antibody replaces catalog number LS-C155884. It has been validated for use in the following assays: IHC-P.
Target:	abl-interactor 1 (ABI1)
Synonyms:	ABI1 Antibody, Abelson interactor 1 Antibody, Abl-interactor protein 1 long Antibody, ABI-1 Antibody, Abl-interactor 1 Antibody, Abl interactor 1 Antibody, Abl-binding protein 4 Antibody, ABLBP4 Antibody, NAP1BP Antibody, Nap1 binding protein Antibody, SSH3BP1 Antibody, Nap1-binding protein Antibody, E3B1 Antibody, Eps8-binding protein Antibody, Interactor protein AbIBP4 Antibody, SSH3BP Antibody
Host	ABI1 antibody was produced in Rabbit
Clonality:	Polyclonal
Immunogen Species:	ABI1 / ABI-1 antibody was raised against Human
Antigen Type:	Synthetic peptide
Immunogen:	ABI1 / ABI-1 antibody was raised against kLH-conjugated synthetic peptide from N-terminal region of human ABI1.
Specificity:	Human ABI1
Epitope:	aa87-117
Reactivity:	Human
Purification:	Immunoaffinity purified
Presentation:	PBS, 0.09% sodium azide
Recommended Storage:	Maintain refrigerated at 2-8°C for up to 6 months. For long term storage store at -20°C.
Uses:	IHC - Paraffin (5 µg/ml), Immunofluorescence (1:10 - 1:50), Western blot (1:1000), Flow Cytometry (1:10 - 1:50) (Optimal dilution to be determined by the researcher)
Size:	200 µl

Immunohistochemistry Image:



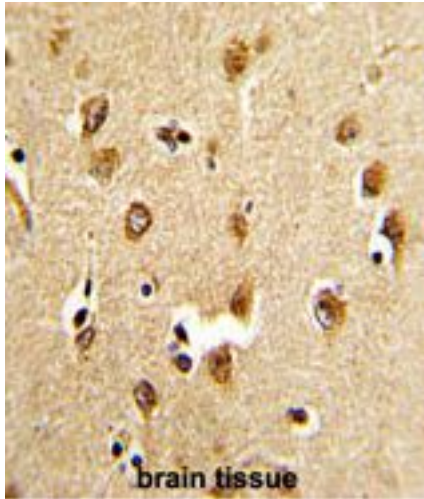
Human Brain, Cerebellum: Formalin-Fixed, Paraffin-Embedded (FFPE)

Immunohistochemistry Image:



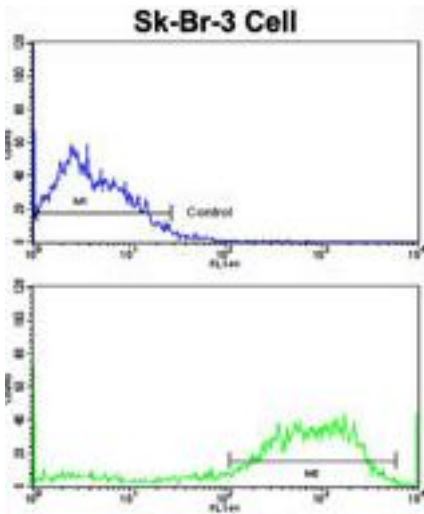
Immunofluorescence of ABI1 Antibody (N-term) with paraffin-embedded human brain tissue. 0.05 mg/ml primary antibody was followed by FITC-conjugated goat anti-rabbit IgG (whole molecule). FITC emits green fluorescence.

Immunohistochemistry Image:



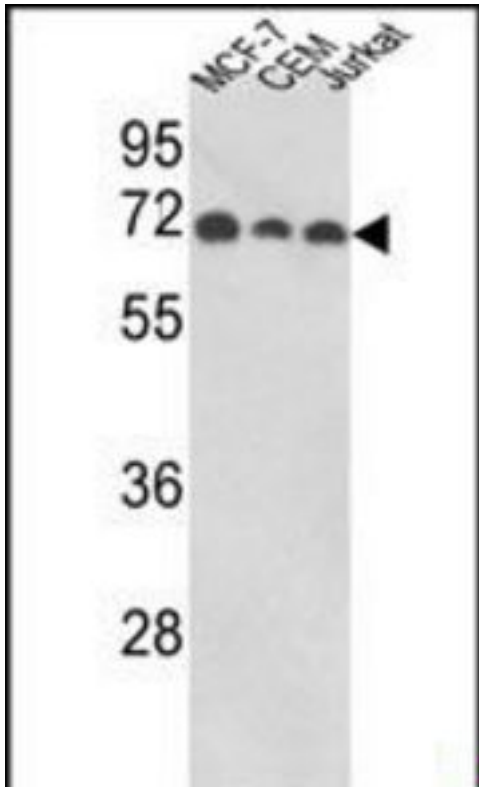
Formalin-fixed and paraffin-embedded human brain tissue reacted with ABI1 Antibody (N-term), which was peroxidase-conjugated to the secondary antibody, followed by DAB staining.

Flow Cytometry Image:



Flow cytometry of SK-Br-3 cells using ABI1 Antibody (N-term)(bottom histogram) compared to a negative control cell (top histogram). FITC-conjugated goat-anti-rabbit secondary antibodies were used for the analysis.

Western Blot Image:



Western blot of ABI1 Antibody (N-term) in MCF-7, CEM, Jurkat cell line lysates (35 ug/lane). ABI1 (arrow) was detected using the purified Pab.

Requested From:

Japan

Laboratory Reagent For In Vitro Research Use Only

Not for resale without prior written consent from LifeSpan BioSciences, Inc.

Created on 9/24/2014

© 2014 LifeSpan BioSciences