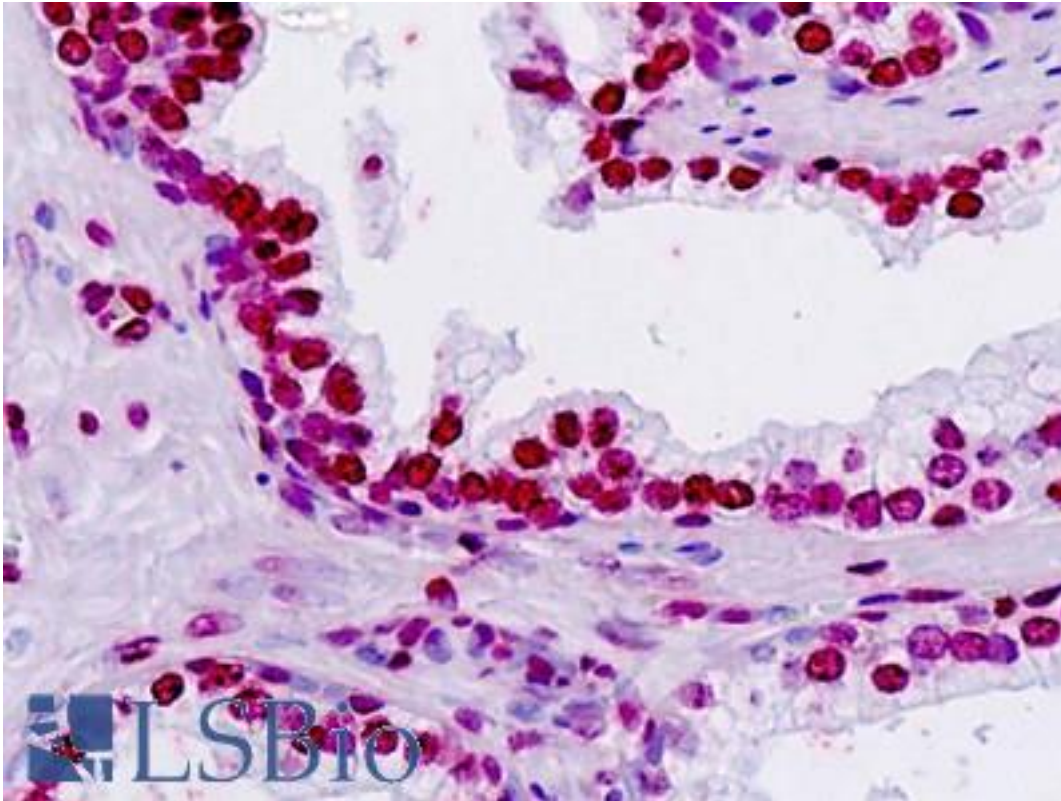


**TSHZ2 Rabbit anti-Human Polyclonal (aa470-500) Antibody - LS-B9329 - LSBio**

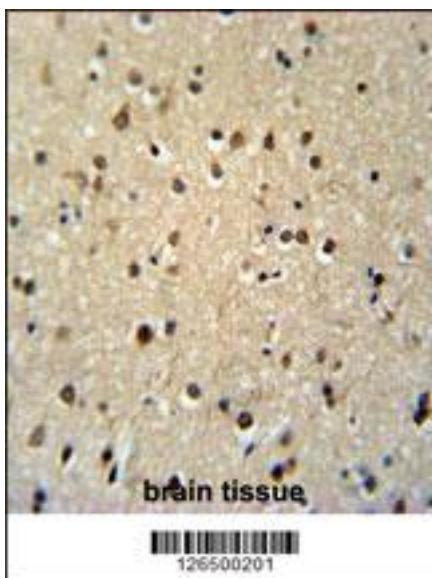
<b>CatalogID:</b>	LS-B9329
<b>Validation:</b>	This antibody replaces catalog number LS-C160251. It has been validated for use in the following assays: IHC-P.
<b>Target:</b>	teashirt zinc finger homeobox 2 (TSHZ2)
<b>Synonyms:</b>	TSHZ2 Antibody, ZABC2 Antibody, TSH2 Antibody, OVC10-2 Antibody, Zinc finger protein 218 Antibody, Teashirt homolog 2 Antibody, C20orf17 Antibody, Teashirt family zinc finger 2 Antibody, ZNF218 Antibody
<b>Host</b>	TSHZ2 antibody was produced in Rabbit
<b>Clonality:</b>	Polyclonal
<b>Immunogen Species:</b>	TSHZ2 antibody was raised against Human
<b>Antigen Type:</b>	Synthetic peptide
<b>Immunogen:</b>	TSHZ2 antibody was raised against kLH-conjugated synthetic peptide from N-terminal region of human TSH2.
<b>Specificity:</b>	Human TSHZ2
<b>Epitope:</b>	aa470-500
<b>Reactivity:</b>	Human
<b>Purification:</b>	Immunoaffinity purified
<b>Presentation:</b>	PBS, 0.09% sodium azide
<b>Recommended Storage:</b>	Maintain refrigerated at 2-8°C for up to 6 months. For long term storage store at -20°C.
<b>Uses:</b>	IHC - Paraffin (5 µg/ml), Immunofluorescence (1:10 - 1:50), Western blot (1:1000), Flow Cytometry (1:10 - 1:50) (Optimal dilution to be determined by the researcher)
<b>Size:</b>	200 µl

**Immunohistochemistry Image:**



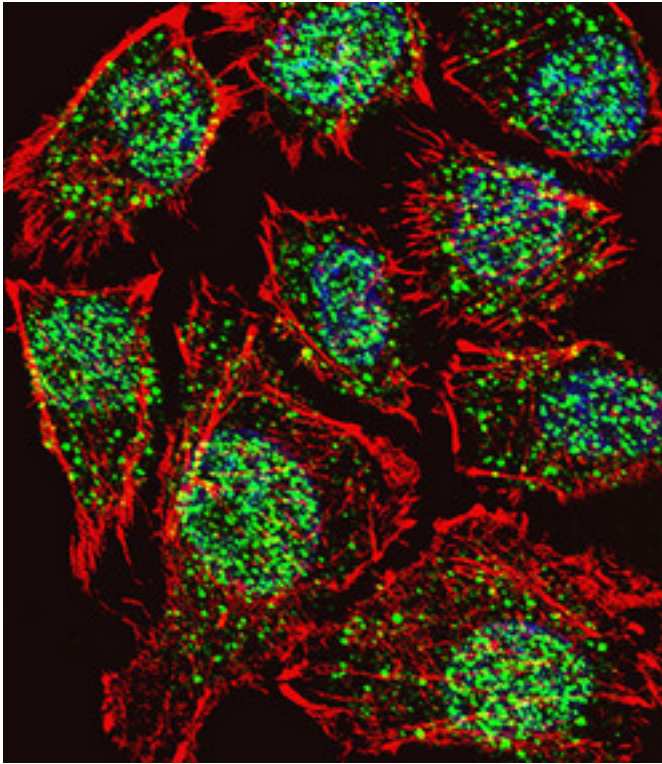
Human Prostate: Formalin-Fixed, Paraffin-Embedded (FFPE)

**Immunohistochemistry Image:**



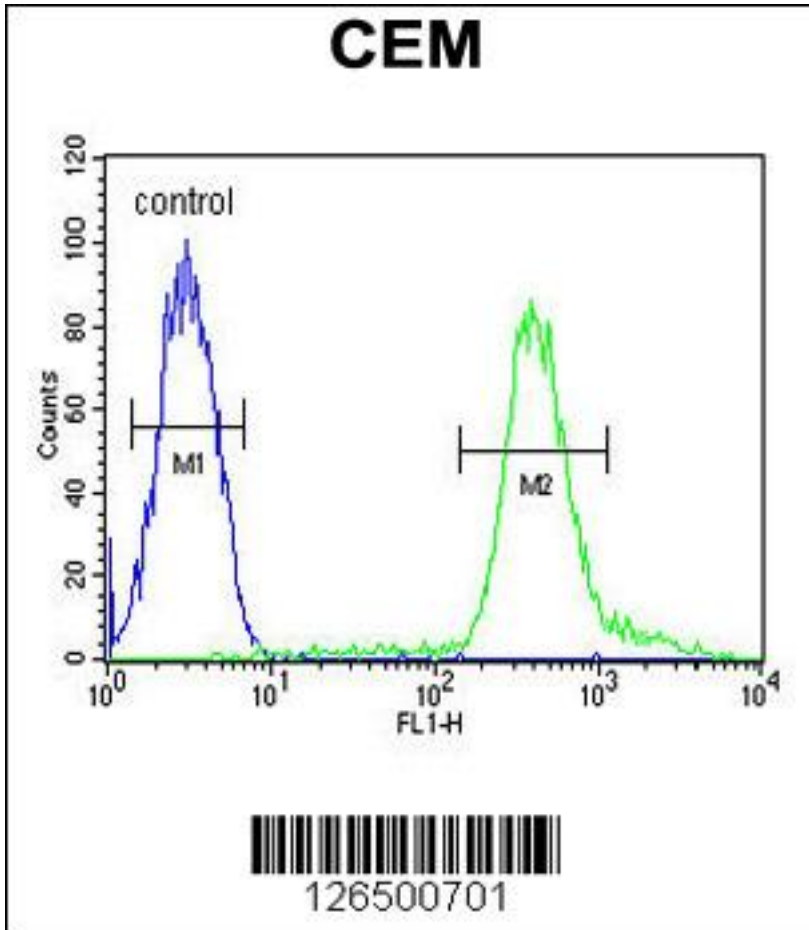
TSH2 Antibody (N-term) immunohistochemistry analysis in formalin fixed and paraffin embedded human brain tissue followed by peroxidase conjugation of the secondary antibody and DAB staining. This demonstrates the use of the TSH2 Antibody (N-term) for immunohistochemistry.

**Immunofluorescence Image:**



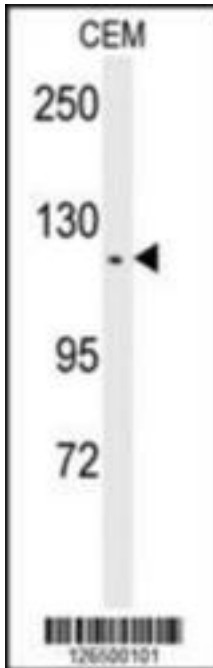
Fluorescent confocal image of U251 cell stained with TSH2 Antibody (N-term). U251 cells were fixed with 4% PFA (20 min), permeabilized with Triton X-100 (0.1%, 10 min), then incubated with TSH2 primary antibody (1:25, 1 h at 37°C). For secondary antibody, Alexa Fluor 488 conjugated donkey anti-rabbit antibody (green) was used (1:400, 50 min at 37°C). Cytoplasmic actin was counterstained with Alexa Fluor 555 (red) conjugated Phalloidin (7 units/ml, 1 h at 37°C). Nuclei were counterstained with DAPI (blue) (10 µg/ml, 10 min). TSH2 immunoreactivity is localized to Nucleus and Vesicles significantly.

Flow Cytometry Image:



TSH2 Antibody (N-term) flow cytometric analysis of CEM cells (right histogram) compared to a negative control cell (left histogram). FITC-conjugated goat-anti-rabbit secondary antibodies were used for the analysis.

**Western Blot Image:**



Western blot analysis of TSH2 Antibody (N-term) in CEM cell line lysates (35 ug/lane). TSH2 (arrow) was detected using the purified Pab.

**Requested From:**

Japan

Laboratory Reagent For In Vitro Research Use Only

Not for resale without prior written consent from LifeSpan BioSciences, Inc.

Created on 9/24/2014

© 2014 LifeSpan BioSciences