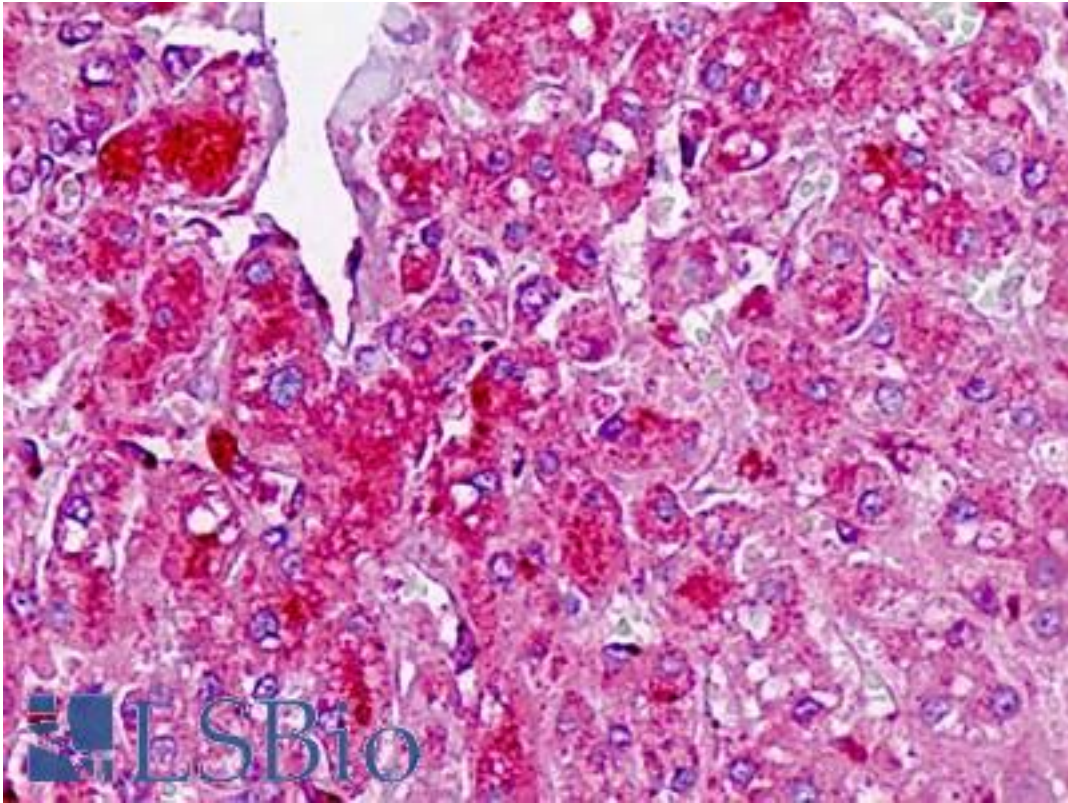


TAF4B Rabbit anti-Human Polyclonal (aa654-683) Antibody - LS-B9327 - LSBio

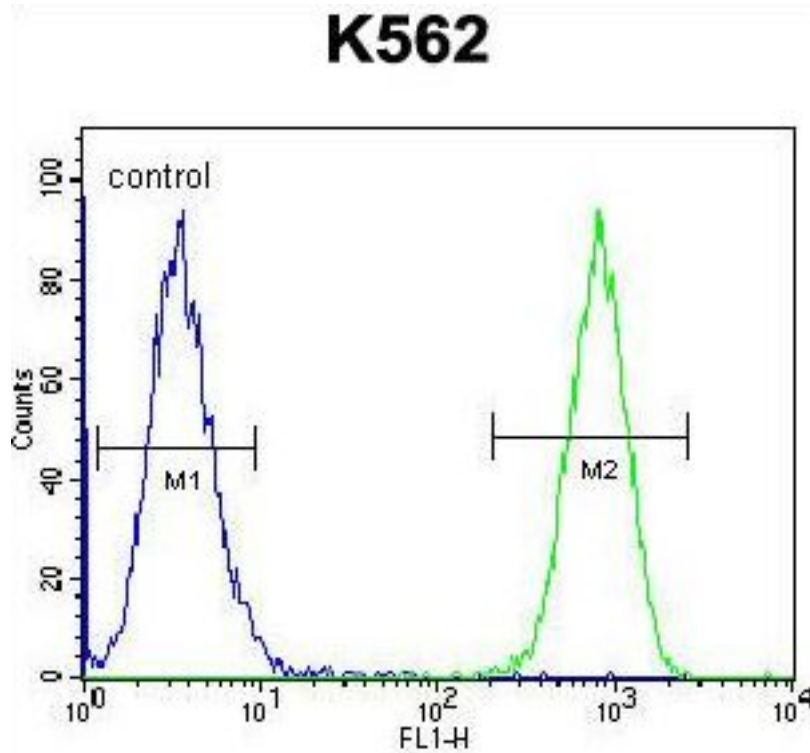
CatalogID:	LS-B9327
Validation:	This antibody replaces catalog number LS-C161690. It has been validated for use in the following assays: IHC-P.
Target:	TAF4b RNA polymerase II, TATA box binding protein (TBP)-associated factor, 105kDa
Synonyms:	TAF4B Antibody, TAF(II)105 Antibody, TAFII105 Antibody, TAF2C2 Antibody, TAFII-105 Antibody
Host	TAF4B antibody was produced in Rabbit
Clonality:	Polyclonal
Immunogen Species:	TAF4B antibody was raised against Human
Antigen Type:	Synthetic peptide
Immunogen:	TAF4B antibody was raised against kLH-conjugated synthetic peptide from C-terminal region of human TAF4B.
Specificity:	Human TAF4B
Epitope:	aa654-683
Reactivity:	Human
Purification:	Immunoaffinity purified
Presentation:	PBS, 0.09% sodium azide
Recommended Storage:	Maintain refrigerated at 2-8°C for up to 6 months. For long term storage store at -20°C.
Uses:	IHC - Paraffin (5 µg/ml), Western blot (1:1000), Flow Cytometry (1:10 - 1:50) (Optimal dilution to be determined by the researcher)
Size:	200 µl

Immunohistochemistry Image:



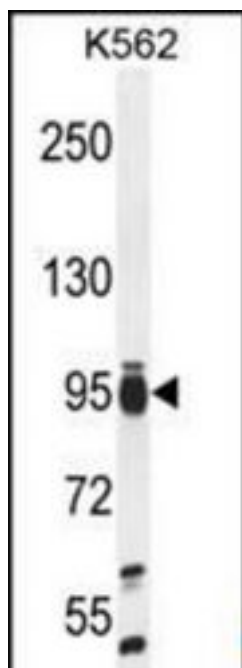
Human Liver: Formalin-Fixed, Paraffin-Embedded (FFPE)

Flow Cytometry Image:



TAF4B Antibody (C-term) flow cytometry of K562 cells (right histogram) compared to a negative control cell (left histogram). FITC-conjugated goat-anti-rabbit secondary antibodies were used for the analysis.

Western Blot Image:



TAF4B Antibody (C-term) Western blot of K562 cell line lysates (35 ug/lane). This demonstrates the TAF4B antibody detected the TAF4B protein (arrow).

Requested From:	Japan
Laboratory Reagent For In Vitro Research Use Only	
Not for resale without prior written consent from LifeSpan BioSciences, Inc.	
Created on 9/24/2014	
© 2014 LifeSpan BioSciences	