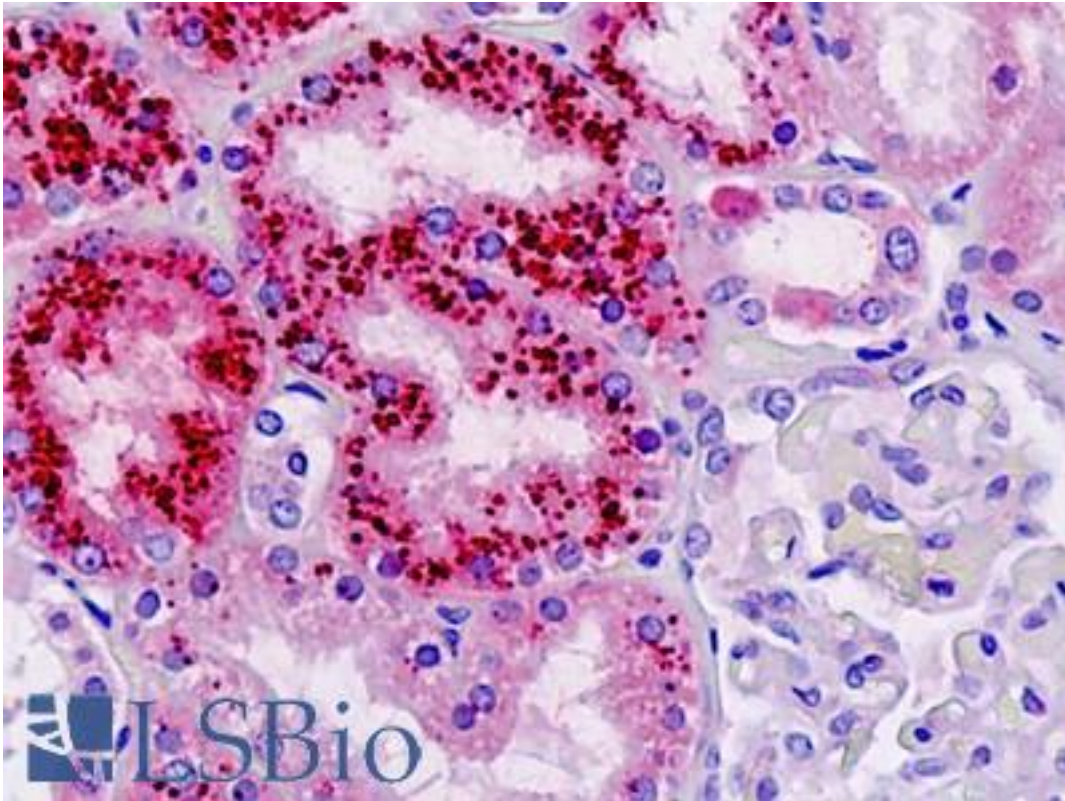


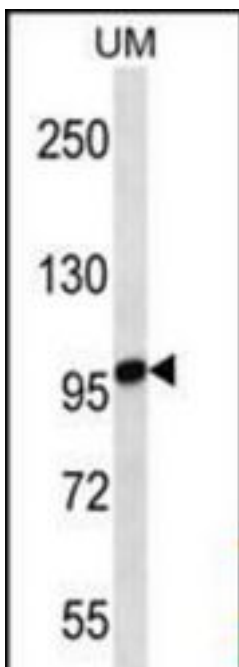
STIM2 Rabbit anti-Human Polyclonal (aa97-127) Antibody - LS-B9326 - LSBio	
CatalogID:	LS-B9326
Validation:	This antibody replaces catalog number LS-C161559. It has been validated for use in the following assays: IHC-P.
Target:	stromal interaction molecule 2 (STIM2)
Synonyms:	STIM2 Antibody, KIAA1482 Antibody, Stromal interaction molecule 2 Antibody
Host	STIM2 antibody was produced in Rabbit
Clonality:	Polyclonal
Immunogen Species:	STIM2 antibody was raised against Human
Antigen Type:	Synthetic peptide
Immunogen:	STIM2 antibody was raised against kLH-conjugated synthetic peptide from N-terminal region of human STIM2.
Specificity:	Human STIM2
Epitope:	aa97-127
Reactivity:	Human
Purification:	Immunoaffinity purified
Presentation:	PBS, 0.09% sodium azide
Recommended Storage:	Maintain refrigerated at 2-8°C for up to 6 months. For long term storage store at -20°C.
Uses:	IHC - Paraffin (5 µg/ml), Western blot (1:1000) (Optimal dilution to be determined by the researcher)
Size:	200 µl

Immunohistochemistry Image:



Human Kidney: Formalin-Fixed, Paraffin-Embedded (FFPE)

Western Blot Image:



STIM2 Antibody (N-term) Western blot of uterine tumor lysates (35 ug/lane). This demonstrates the STIM2 antibody detected the STIM2 protein (arrow).

Requested From:

Japan

Laboratory Reagent For In Vitro Research Use Only

Not for resale without prior written consent from LifeSpan BioSciences, Inc.

Created on 9/24/2014

© 2014 LifeSpan BioSciences