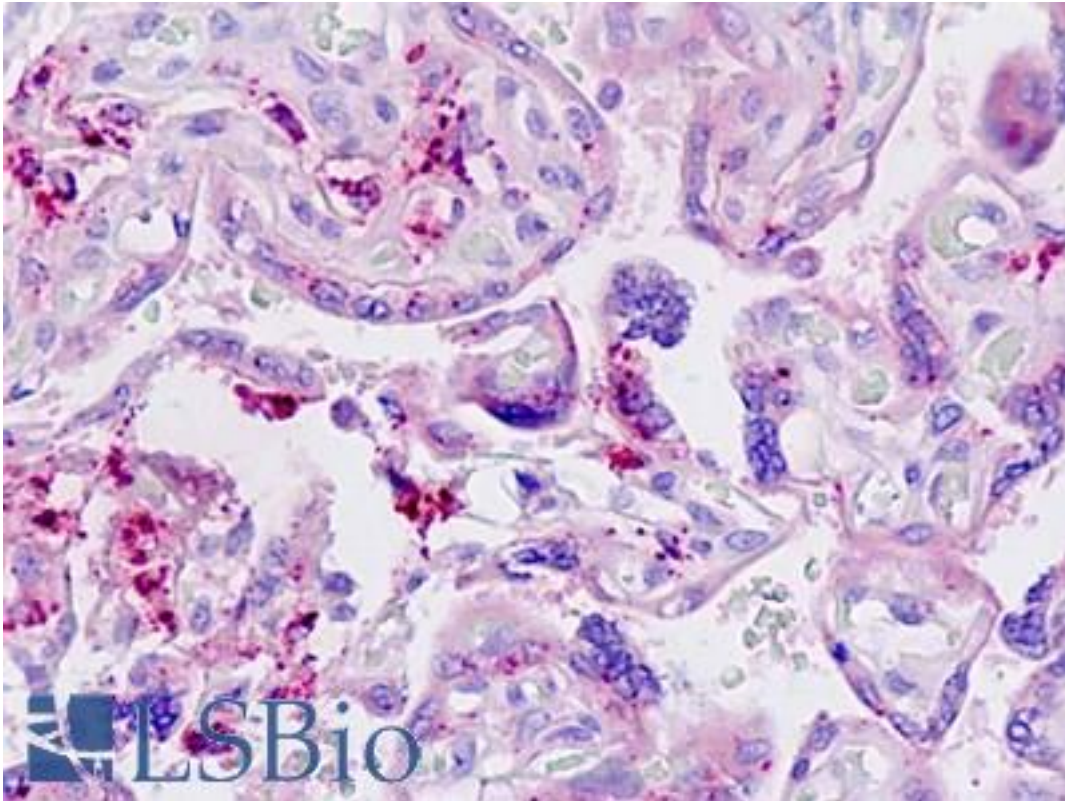


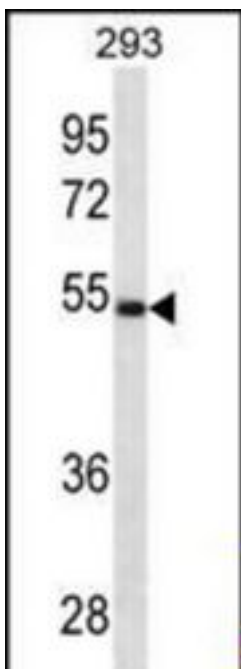
LGMN / Legumain Rabbit anti-Human Polyclonal (aa83-112) Antibody - LS-B9325 - LSBio	
<b>CatalogID:</b>	LS-B9325
<b>Validation:</b>	This antibody replaces catalog number LS-C157863. It has been validated for use in the following assays: IHC-P.
<b>Target:</b>	legumain (LGMN)
<b>Synonyms:</b>	LGMN Antibody, AEP Antibody, LGMN1 Antibody, Protease, cysteine 1 Antibody, Asparaginyl endopeptidase Antibody, Cysteine protease 1 Antibody, Legumain Antibody, PRSC1 Antibody
<b>Family / Subfamily:</b>	Protease / Cysteine C13
<b>Host</b>	LGMN antibody was produced in Rabbit
<b>Clonality:</b>	Polyclonal
<b>Immunogen Species:</b>	LGMN / Legumain antibody was raised against Human
<b>Antigen Type:</b>	Synthetic peptide
<b>Immunogen:</b>	LGMN / Legumain antibody was raised against kLH-conjugated synthetic peptide from N-terminal region of human LGMN.
<b>Specificity:</b>	Human LGMN / Legumain
<b>Epitope:</b>	aa83-112
<b>Reactivity:</b>	Human
<b>Purification:</b>	Immunoaffinity purified
<b>Presentation:</b>	PBS, 0.09% sodium azide
<b>Recommended Storage:</b>	Maintain refrigerated at 2-8°C for up to 6 months. For long term storage store at -20°C.
<b>Uses:</b>	IHC - Paraffin (5 µg/ml), Western blot (1:1000) (Optimal dilution to be determined by the researcher)
<b>Size:</b>	200 µl

**Immunohistochemistry Image:**



Human Placenta: Formalin-Fixed, Paraffin-Embedded (FFPE)

**Western Blot Image:**



LGMN Antibody (N-term) Western blot of 293 cell line lysates (35 ug/lane). This demonstrates the LGMN antibody detected the LGMN protein (arrow).

**Requested From:**

Japan

Laboratory Reagent For In Vitro Research Use Only

Not for resale without prior written consent from LifeSpan BioSciences, Inc.

Created on 9/24/2014

© 2014 LifeSpan BioSciences