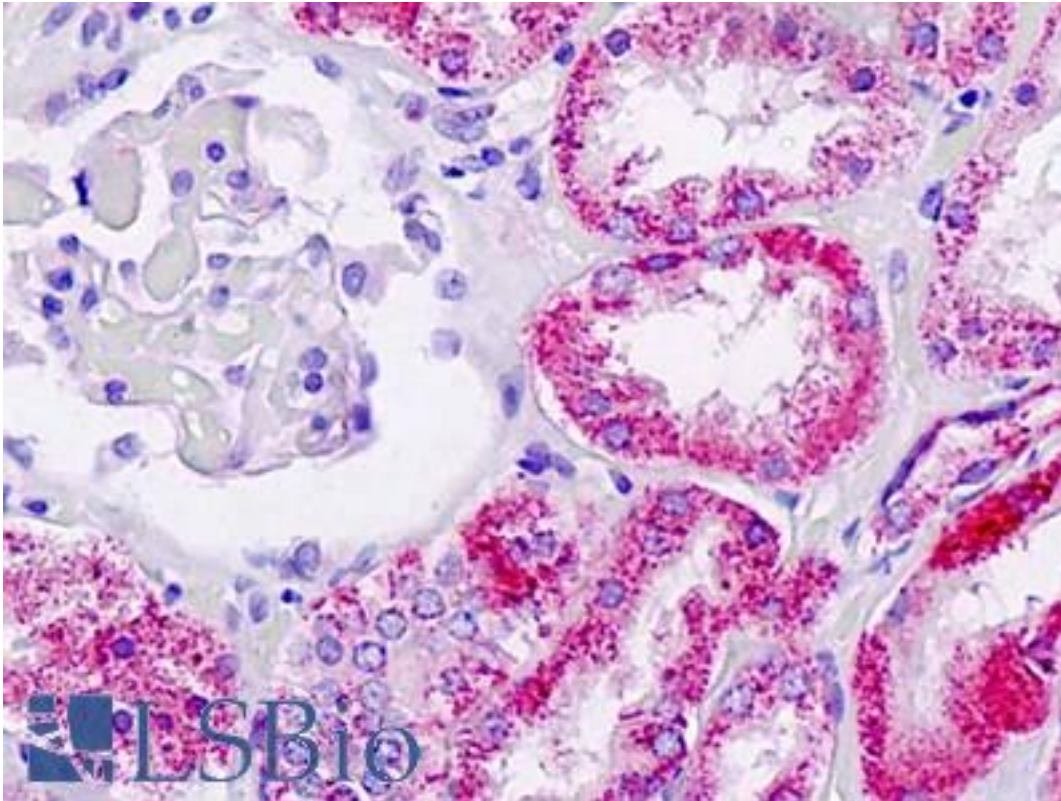


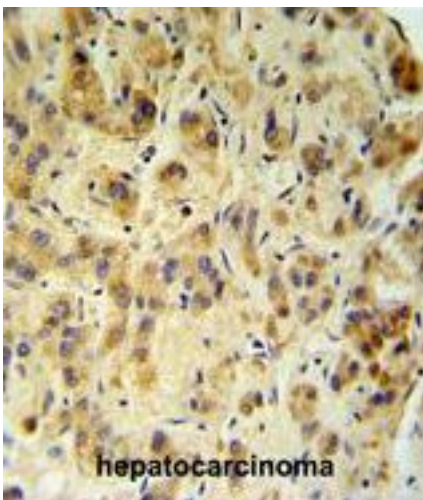
| Alpha Fucosidase / FUCA1 Rabbit anti-Human Polyclonal (aa272-302) Antibody - LS-B9324 - LSBio | |
|---|---|
| CatalogID: | LS-B9324 |
| Validation: | This antibody replaces catalog number LS-C166275. It has been validated for use in the following assays: IHC-P. |
| Target: | fucosidase, alpha-L- 1, tissue (FUCA1) |
| Synonyms: | FUCA1 Antibody, Alpha Fucosidase Antibody, Alpha-L-fucosidase 1 Antibody, Alpha-L-fucosidase I Antibody, FUCA Antibody, Fucosidase, alpha-L- 1, tissue Antibody, Tissue alpha-L-fucosidase Antibody |
| Host | FUCA1 antibody was produced in Rabbit |
| Clonality: | Polyclonal |
| Immunogen Species: | Alpha Fucosidase / FUCA1 antibody was raised against Human |
| Antigen Type: | Synthetic peptide |
| Immunogen: | Alpha Fucosidase / FUCA1 antibody was raised against kLH-conjugated synthetic peptide from internal region of human FUCA1. |
| Specificity: | Human Alpha Fucosidase / FUCA1 |
| Epitope: | aa272-302 |
| Reactivity: | Human |
| Purification: | Ammonium sulfate precipitation |
| Presentation: | PBS, 0.09% sodium azide |
| Recommended Storage: | Maintain refrigerated at 2-8°C for up to 6 months. For long term storage store at -20°C. |
| Uses: | IHC - Paraffin (5 µg/ml), Western blot (1:1000), Flow Cytometry (1:10 - 1:50) (Optimal dilution to be determined by the researcher) |
| Size: | 200 µl |

Immunohistochemistry Image:



Human Kidney: Formalin-Fixed, Paraffin-Embedded (FFPE)

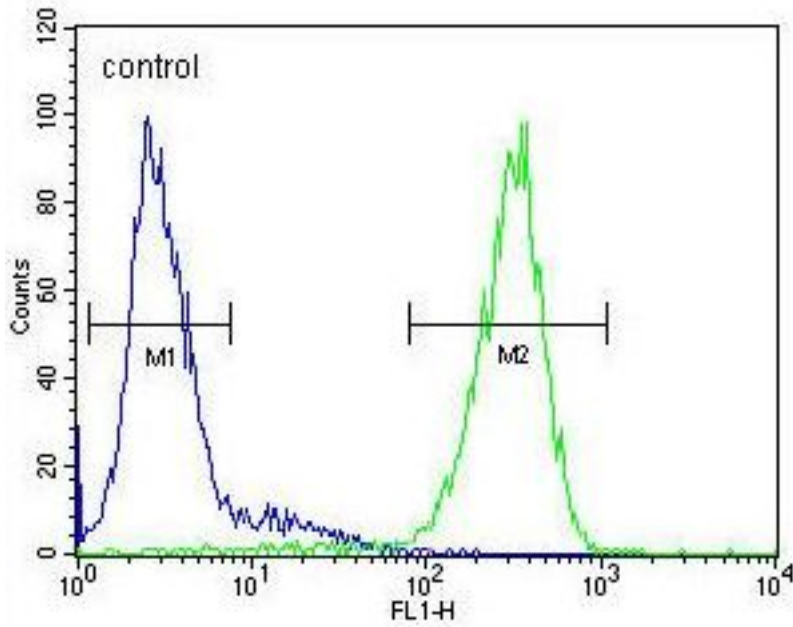
Immunohistochemistry Image:



FUCA1 Antibody (Center) IHC of formalin fixed and paraffin embedded human hepatocarcinoma followed by peroxidase conjugation of the secondary antibody and DAB staining. This demonstrates the use of the FUCA1 Antibody (Center) for immunohistochemistry.

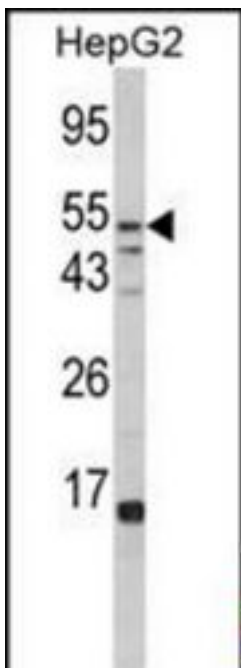
Flow Cytometry Image:

HepG2



FUCA1 Antibody (Center) flow cytometry of HepG2 cells (right histogram) compared to a negative control cell (left histogram). FITC-conjugated goat-anti-rabbit secondary antibodies were used for the analysis.

Western Blot Image:



Western blot of FUCA1 Antibody (Center) in HepG2 cell line lysates (35 ug/lane). FUCA1 (arrow) was detected using the purified Pab.

| | |
|--|-------|
| Requested From: | Japan |
| Laboratory Reagent For In Vitro Research Use Only | |
| Not for resale without prior written consent from LifeSpan BioSciences, Inc. | |
| Created on 9/24/2014 | |
| © 2014 LifeSpan BioSciences | |