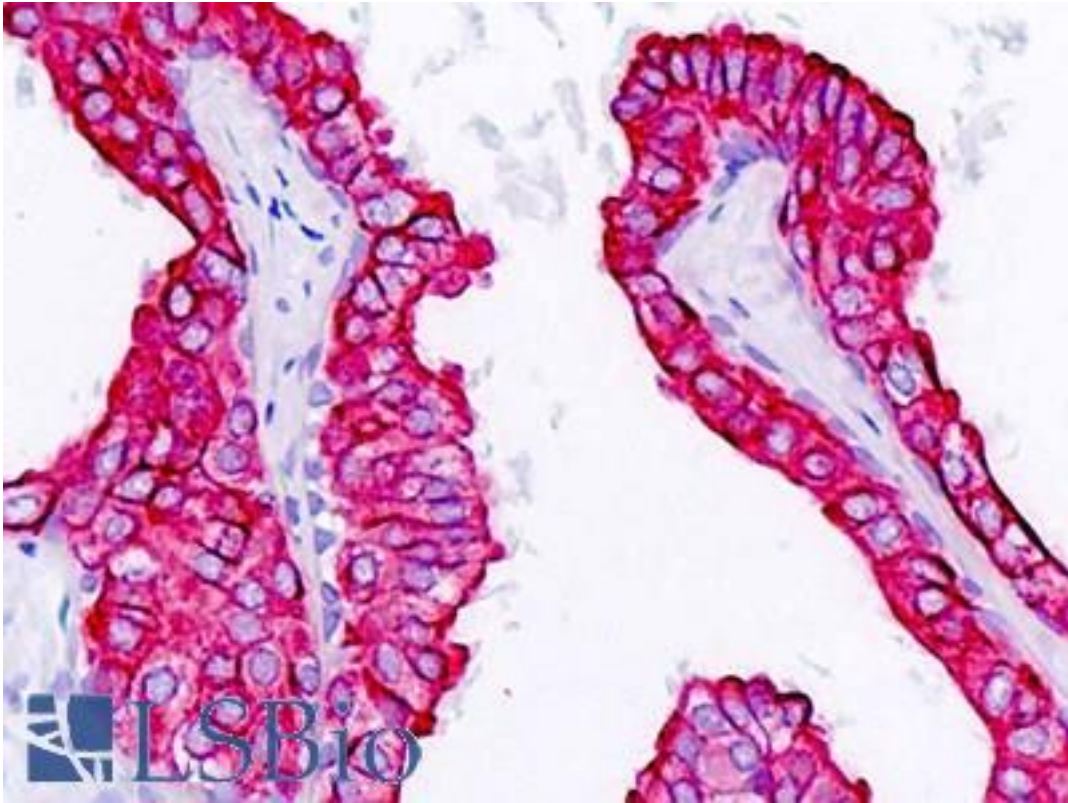


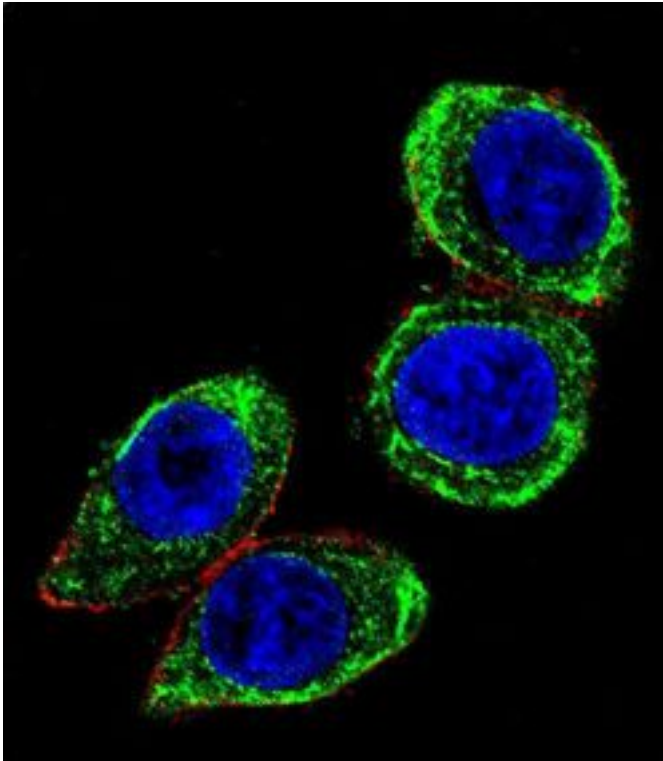
KRT18 / CK18 / Cytokeratin 18 Rabbit anti-Human Polyclonal (C-Terminus) Antibody - LS-B9323 - LSBio	
CatalogID:	LS-B9323
Validation:	This antibody replaces catalog number LS-C100561. It has been validated for use in the following assays: IHC-P.
Target:	keratin 18 (KRT18)
Synonyms:	KRT18 Antibody, CK-18 Antibody, Cytokeratin 18 Antibody, Cytokeratin-18 Antibody, K18 Antibody, Keratin 18 Antibody, CYK18 Antibody, Keratin-18 Antibody
Family / Subfamily:	Keratin / not assigned-Keratin
Host	KRT18 antibody was produced in Rabbit
Clonality:	Polyclonal
Immunogen Species:	KRT18 / CK18 / Cytokeratin 18 antibody was raised against Human
Antigen Type:	Synthetic peptide
Immunogen:	KRT18 / CK18 / Cytokeratin 18 antibody was raised against kLH conjugated synthetic peptide selected from the C-terminal region of human CYK18.
Epitope:	C-Terminus
Reactivity:	Human, Mouse
Purification:	Ammonium sulfate precipitation
Presentation:	PBS, 0.09% sodium azide
Recommended Storage:	Maintain refrigerated at 2-8°C for up to 6 months. For long term storage store at -20°C.
Uses:	IHC - Paraffin (5 µg/ml), Immunofluorescence (1:10 - 1:50), Western blot (1:1000), Flow Cytometry (1:10 - 1:50) (Optimal dilution to be determined by the researcher)
Size:	200 µl

Immunohistochemistry Image:



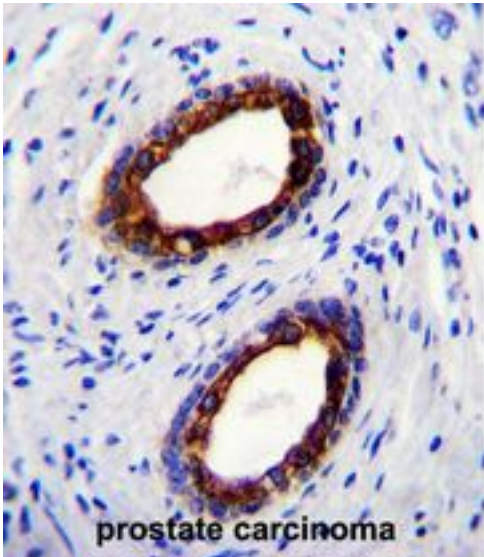
Human Prostate, Epithelium: Formalin-Fixed, Paraffin-Embedded (FFPE)

Immunofluorescence Image:



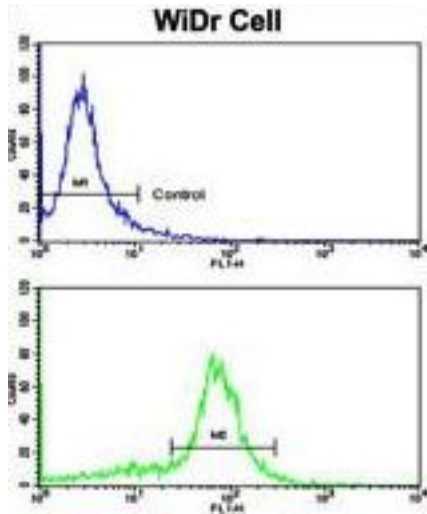
Confocal immunofluorescent analysis of CYK18 Antibody (C-term) with HeLa cell followed by Alexa Fluor 488-conjugated goat anti-rabbit IgG (green). Actin filaments have been labeled with Alexa Fluor 555 phalloidin (red). DAPI was used to stain the cell nuclear (blue).

Immunofluorescence Image:



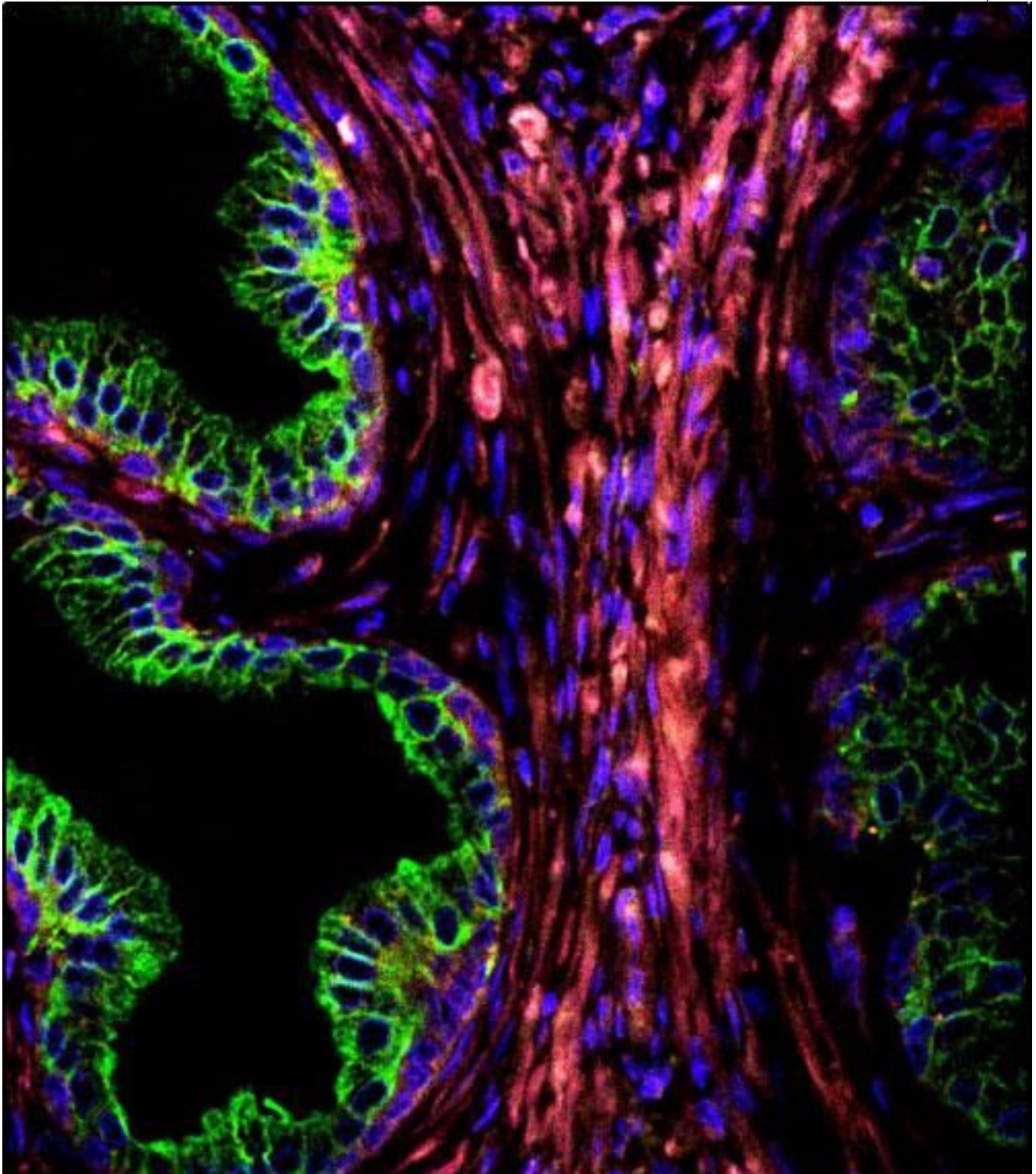
Confocal immunofluorescence of CYK18 Antibody (C-term) LS-B9323 with prostate carcinoma followed by Alexa Fluor 488-conjugated goat anti-rabbit IgG (green). DAPI was used to stain the cell nuclear (blue).

Flow Cytometry Image:



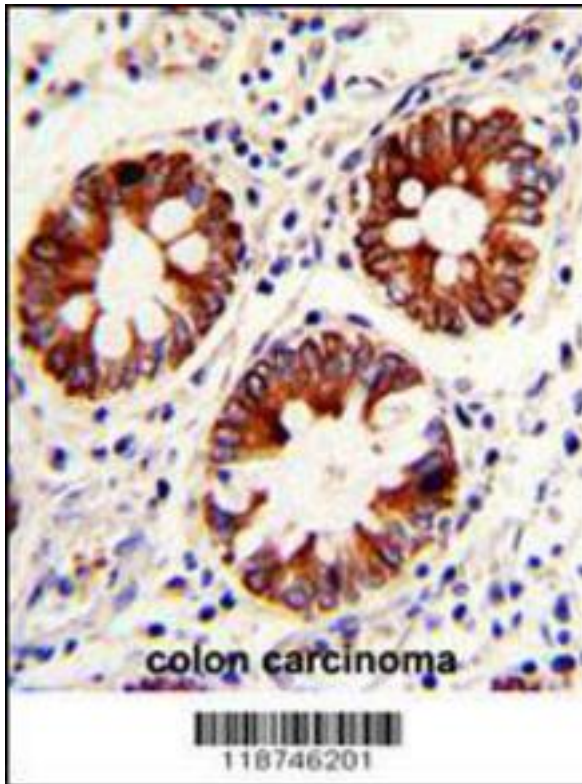
Formalin-fixed and paraffin-embedded human colon carcinoma with CYK18 Antibody (C-term), which was peroxidase-conjugated to the secondary antibody, followed by DAB staining.

Flow Cytometry Image:



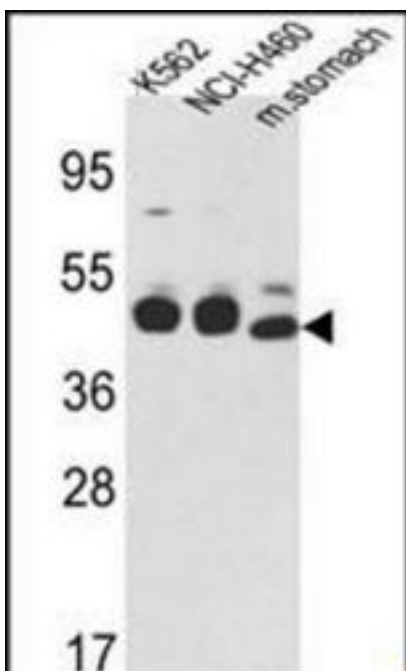
Flow cytometry of WiDr cells using CYK18 Antibody (C-term)(bottom histogram) compared to a negative control cell (top histogram). FITC-conjugated goat-anti-rabbit secondary antibodies were used for the analysis.

Western Blot Image:



Western blot of CYK18 Antibody (C-term) LS-B9323 in K562, NCI-H460 cell line lysates and mouse stomach tissues lysates(35 ug/lane). CYK18(arrow) was detected using the purified Pab.

Western Blot Image:



CYK18 Antibody (C-term) LS-B9323 Western blot of A431 cell line lysates (35 ug/lane). This demonstrates the CYK18 antibody detected the CYK18 protein (arrow) (Kindly offered by Dr. Li).

Requested From:	Japan
Laboratory Reagent For In Vitro Research Use Only	
Not for resale without prior written consent from LifeSpan BioSciences, Inc.	
Created on 9/24/2014	
© 2014 LifeSpan BioSciences	