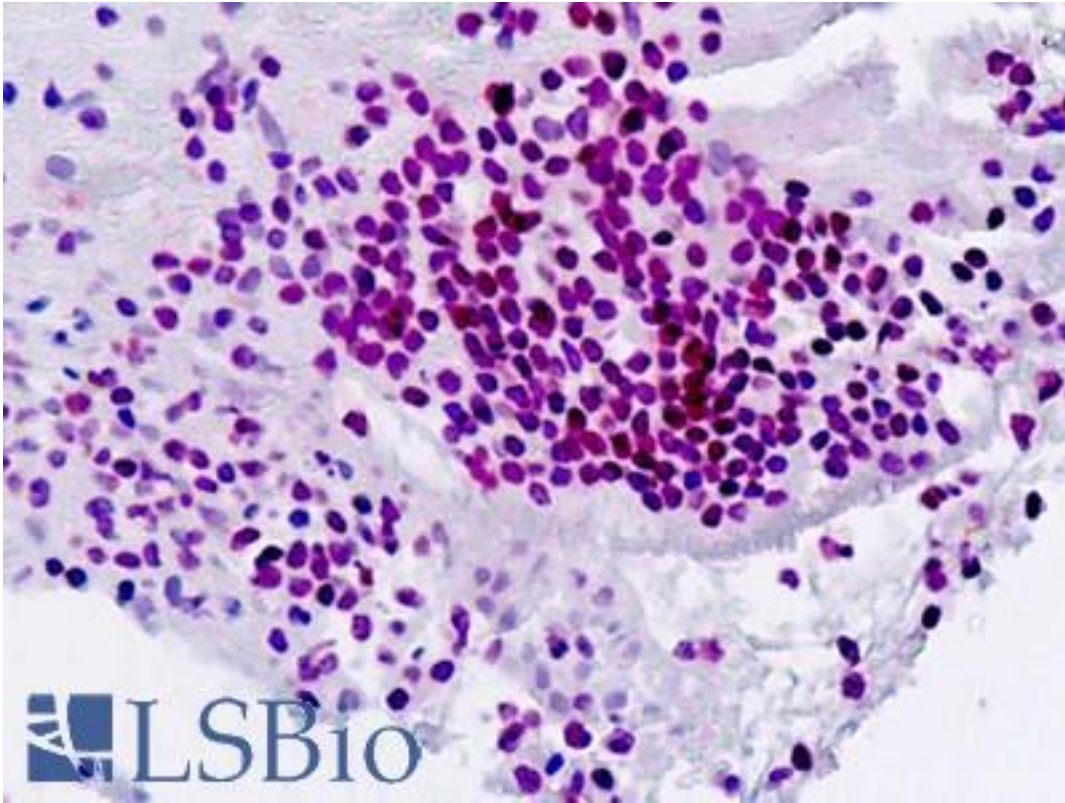


SPI1 / PU.1 Rabbit anti-Human Polyclonal (aa216-246) Antibody - LS-B9322 - LSBio

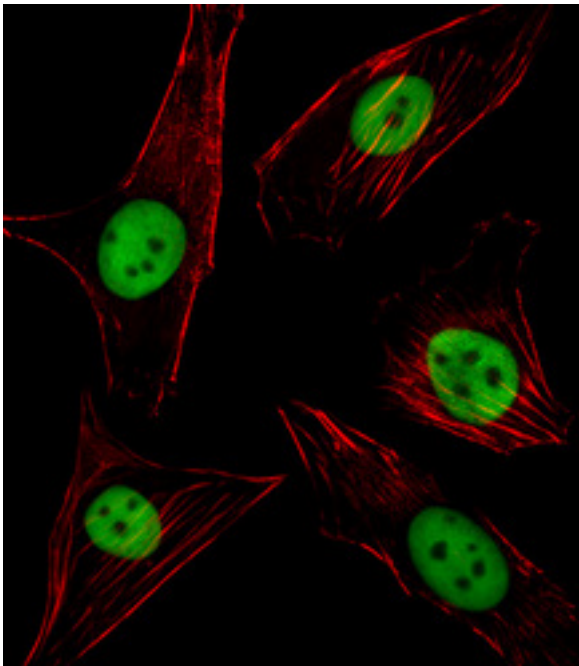
CatalogID:	LS-B9322
Validation:	This antibody replaces catalog number LS-C161449. It has been validated for use in the following assays: IHC-P.
Target:	spleen focus forming virus (SFFV) proviral integration oncogene (SPI1)
Synonyms:	SPI1 Antibody, 31 kDa-transforming protein Antibody, 31 kDa transforming protein Antibody, PU.1 Antibody, SFPI1 Antibody, SPI-1 Antibody, SPI-1 proto-oncogene Antibody, SPI-A Antibody, Transcription factor PU.1 Antibody
Host	SPI1 antibody was produced in Rabbit
Clonality:	Polyclonal
Immunogen Species:	SPI1 / PU.1 antibody was raised against Human
Antigen Type:	Synthetic peptide
Immunogen:	SPI1 / PU.1 antibody was raised against kLH-conjugated synthetic peptide from C-terminal region of human SPI1.
Specificity:	Human PU.1
Epitope:	aa216-246
Reactivity:	Human
Purification:	Immunoaffinity purified
Presentation:	PBS, 0.09% sodium azide
Recommended Storage:	Maintain refrigerated at 2-8°C for up to 6 months. For long term storage store at -20°C.
Uses:	IHC - Paraffin (5 µg/ml), Immunofluorescence (1:10 - 1:50), Western blot (1:1000) (Optimal dilution to be determined by the researcher)
Size:	200 µl

Immunohistochemistry Image:



Human Spleen: Formalin-Fixed, Paraffin-Embedded (FFPE)

Western Blot Image:



SPI1 Antibody (C-term) Western blot of WiDr cell line lysates (35 ug/lane). This demonstrates the SPI1 antibody detected the SPI1 protein (arrow).

Requested From:

Japan

Laboratory Reagent For In Vitro Research Use Only

Not for resale without prior written consent from LifeSpan BioSciences, Inc.

Created on 9/24/2014

© 2014 LifeSpan BioSciences