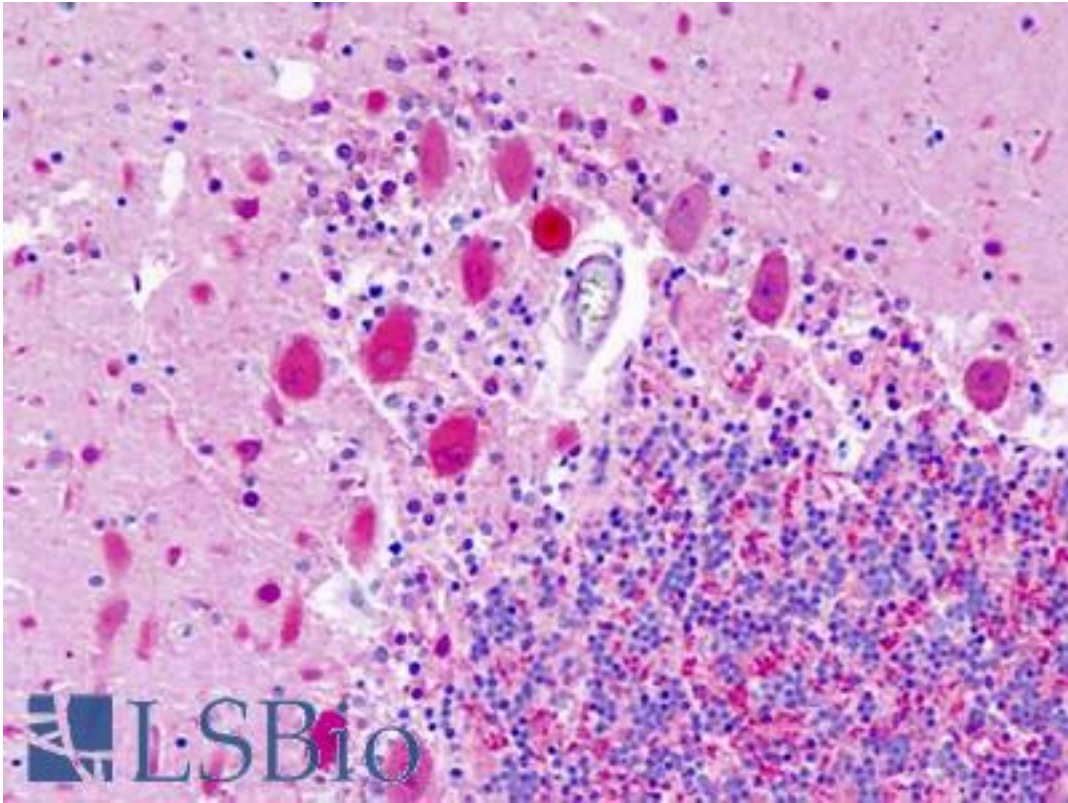


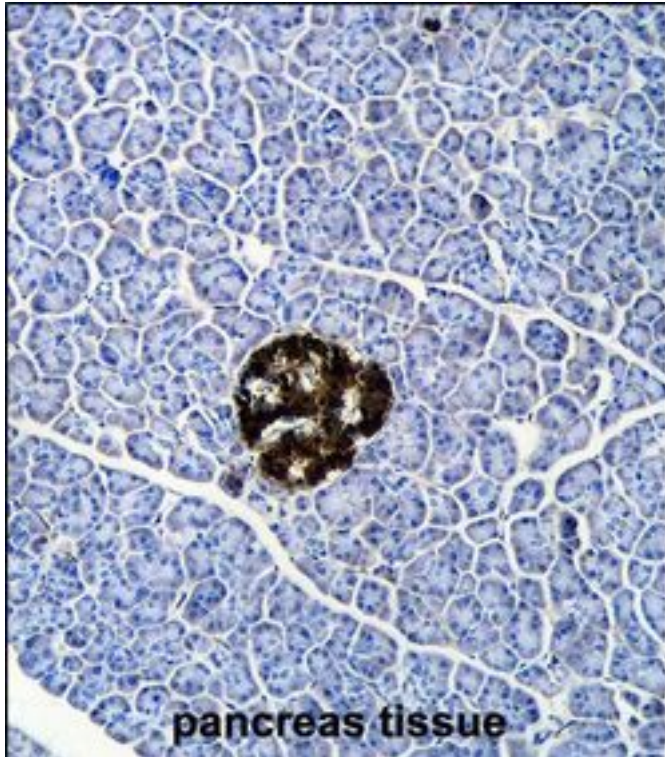
UCHL1 / PGP9.5 Rabbit anti-Human Polyclonal (aa193-223) Antibody - LS-B9320 - LSBio	
<b>CatalogID:</b>	LS-B9320
<b>Validation:</b>	This antibody replaces catalog number LS-C160410. It has been validated for use in the following assays: IHC-P.
<b>Target:</b>	ubiquitin carboxyl-terminal esterase L1 (ubiquitin thiolesterase) (UCHL1)
<b>Synonyms:</b>	UCHL1 Antibody, Ubiquitin C-terminal hydrolase Antibody, PARK5 Antibody, PGP9.5 Antibody, PGP95 Antibody, Ubiquitin thioesterase L1 Antibody, Neuron cytoplasmic protein 9.5 Antibody, PGP 9.5 Antibody, Uch-L1 Antibody
<b>Family / Subfamily:</b>	Protease / Cysteine C12
<b>Host</b>	UCHL1 antibody was produced in Rabbit
<b>Clonality:</b>	Polyclonal
<b>Immunogen Species:</b>	UCHL1 / PGP9.5 antibody was raised against Human
<b>Antigen Type:</b>	Synthetic peptide
<b>Immunogen:</b>	UCHL1 / PGP9.5 antibody was raised against kLH-conjugated synthetic peptide from C-terminal region of human UCHL1.
<b>Specificity:</b>	Human UCHL1 / PGP9.5
<b>Epitope:</b>	aa193-223
<b>Reactivity:</b>	Human, Mouse
<b>Purification:</b>	Immunoaffinity purified
<b>Presentation:</b>	PBS, 0.09% sodium azide
<b>Recommended Storage:</b>	Maintain refrigerated at 2-8°C for up to 6 months. For long term storage store at -20°C.
<b>Uses:</b>	IHC - Paraffin (5 µg/ml), Immunofluorescence (1:10 - 1:50), Western blot (1:1000) (Optimal dilution to be determined by the researcher)
<b>Size:</b>	200 µl

**Immunohistochemistry Image:**



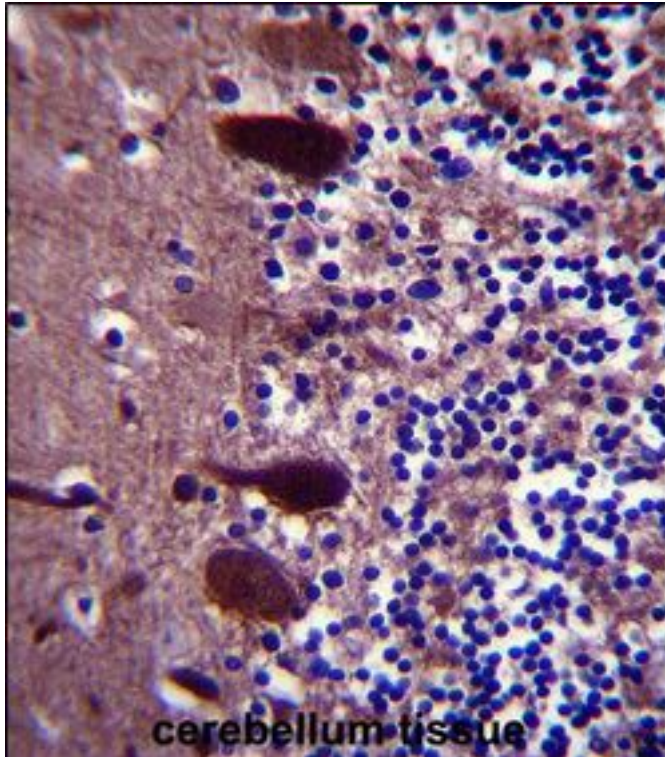
Human Brain, Cerebellum: Formalin-Fixed, Paraffin-Embedded (FFPE)

**Immunohistochemistry Image:**



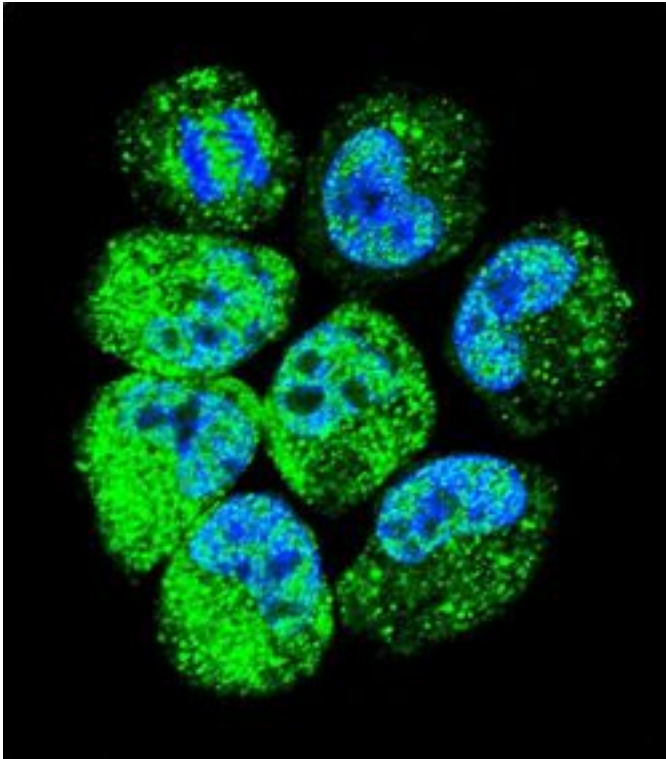
UCHL1 Antibody (C-term) IHC of formalin fixed and paraffin embedded human pancreas tissue followed by peroxidase conjugation of the secondary antibody and DAB staining. This demonstrates the use of UCHL1 Antibody (C-term) for immunohistochemistry.

**Immunohistochemistry Image:**



UCHL1 Antibody (C-term) IHC of formalin fixed and paraffin embedded human cerebellum tissue followed by peroxidase conjugation of the secondary antibody and DAB staining. This demonstrates the use of UCHL1 Antibody (C-term) for immunohistochemistry.

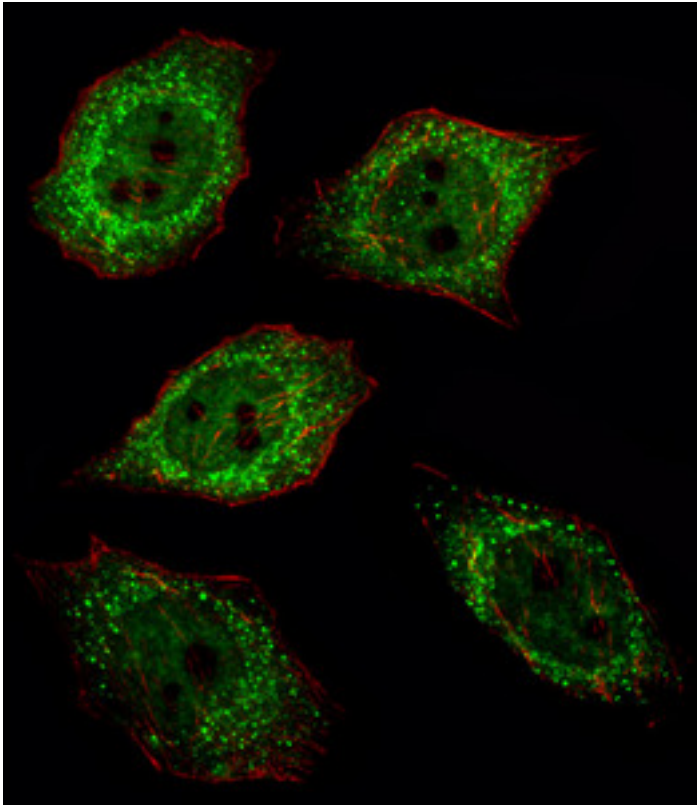
**Immunofluorescence Image:**



Confocal immunofluorescence of UCHL1 Antibody (C-term)with NCI-H460 cell followed by Alexa Fluor 488-conjugated goat anti-rabbit IgG (green).DAPI was used to stain the cell nuclear (blue).



**Western Blot Image:**



Western blot of UCHL1 Antibody (C-term) in Ramos, NCI-H460 cell line and mouse brain tissue lysates (35 ug/lane). UCHL1 (arrow) was detected using the purified Pab.

**Western Blot Image:**

ERROR: Infinite table loop