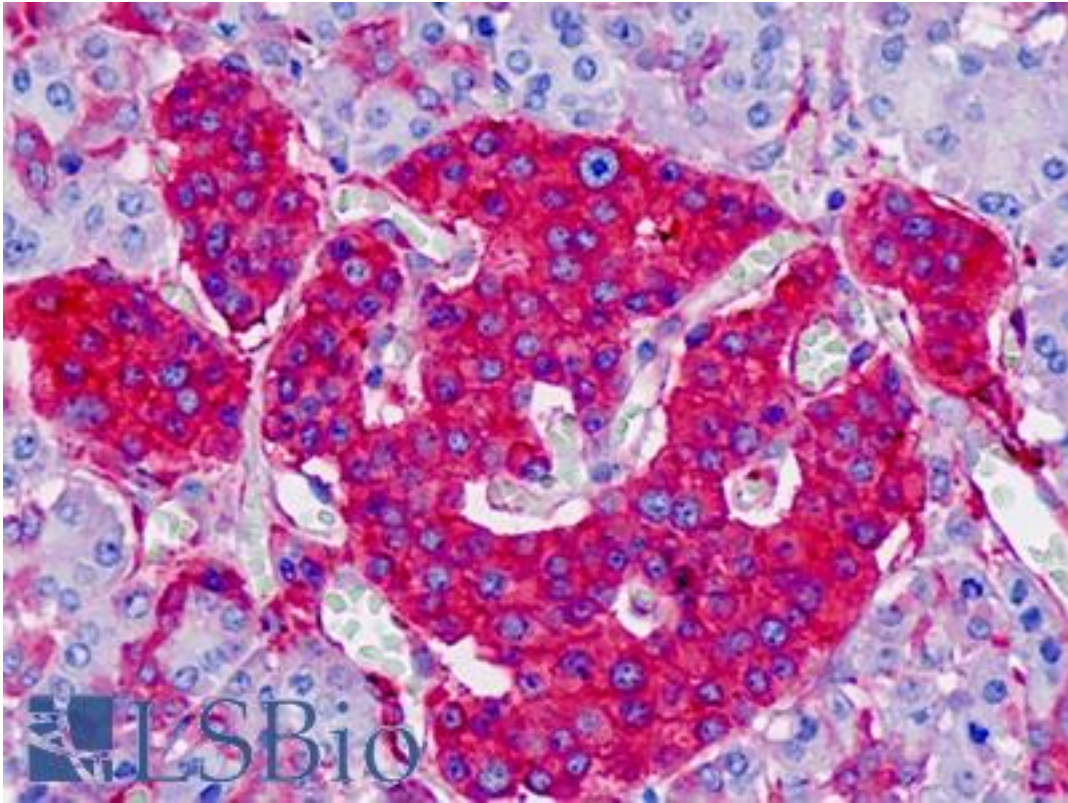


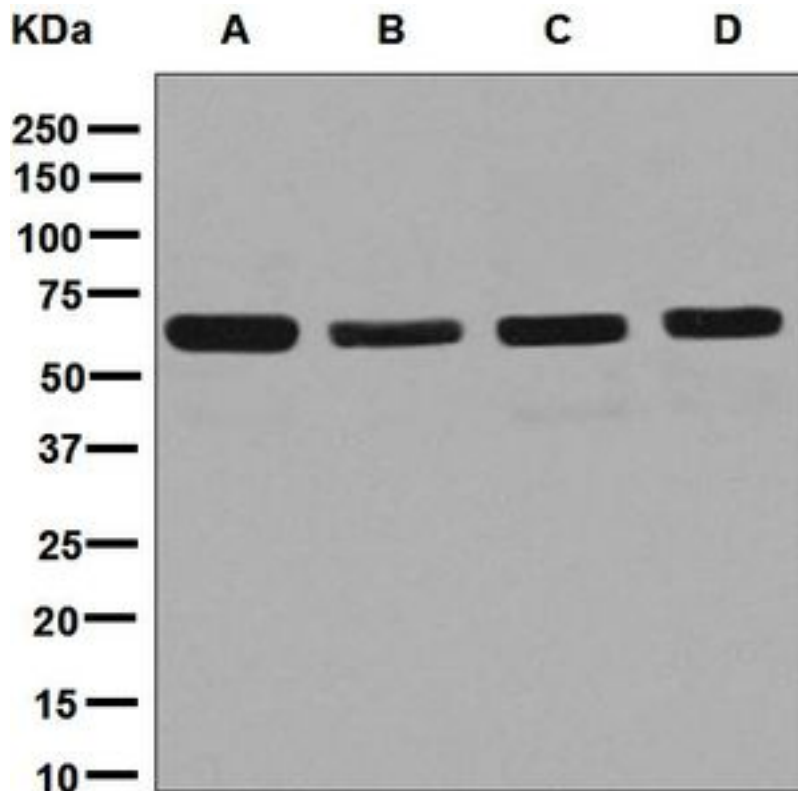
DPYSL2 / CRMP2 Rabbit anti-Human Monoclonal (C-Terminus) (EPR7792) Antibody - LS-B9303 - LSBio	
CatalogID:	LS-B9303
Validation:	This antibody replaces catalog number LS-C154410. It has been validated for use in the following assays: IHC-P.
Target:	dihydropyrimidinase-like 2 (DPYSL2)
Synonyms:	DPYSL2 Antibody, CRMP2 Antibody, CRMP-2 Antibody, DHPRP2 Antibody, Dihydropyrimidinase-like 2 Antibody, DRP-2 Antibody, N2A3 Antibody, ULIP2 Antibody, ULIP-2 Antibody, Unc-33-like phosphoprotein 2 Antibody
Host	DPYSL2 antibody was produced in Rabbit
Clonality:	Monoclonal
Isotype:	IgG
Clone Name:	EPR7792
Immunogen Species:	DPYSL2 / CRMP2 antibody was raised against Human
Antigen Type:	Synthetic peptide
Immunogen:	DPYSL2 / CRMP2 antibody was raised against a synthetic peptide corresponding to residues near the C-terminus of human CRMP-2 was used as an immunogen.
Specificity:	Human CRMP-2. Species cross-reactivity is based on WB analysis.
Epitope:	C-Terminus
Reactivity:	Human, Mouse, Rat
Purification:	Tissue culture supernatant
Presentation:	Tris-Glycine-NaCl or PBS, pH 7.2-7.4, 40-50% Glycerol, 0.01% sodium azide, 0.05% BSA
Recommended Storage:	Store at -20°C.
Uses:	IHC - Paraffin (1:50), ICC (1:50 - 1:100), Western blot (1:10000 - 1:50000), Immunoprecipitation (1:10 - 1:100), Flow Cytometry (1:10 - 1:100) (Optimal dilution to be determined by the researcher)
Size:	50 µl

Immunohistochemistry Image:



Human Pancreas, Islet of Langerhans: Formalin-Fixed, Paraffin-Embedded (FFPE)

Western Blot Image:



Western blot analysis on (A) PC-12, (B) Jurkat, (C) U87-MG, and (D) NIH/3T3 cell lysates using anti-CRMP-2 antibody.

Requested From:

Japan

Laboratory Reagent For In Vitro Research Use Only

Not for resale without prior written consent from LifeSpan BioSciences, Inc.

Created on 9/24/2014

© 2014 LifeSpan BioSciences