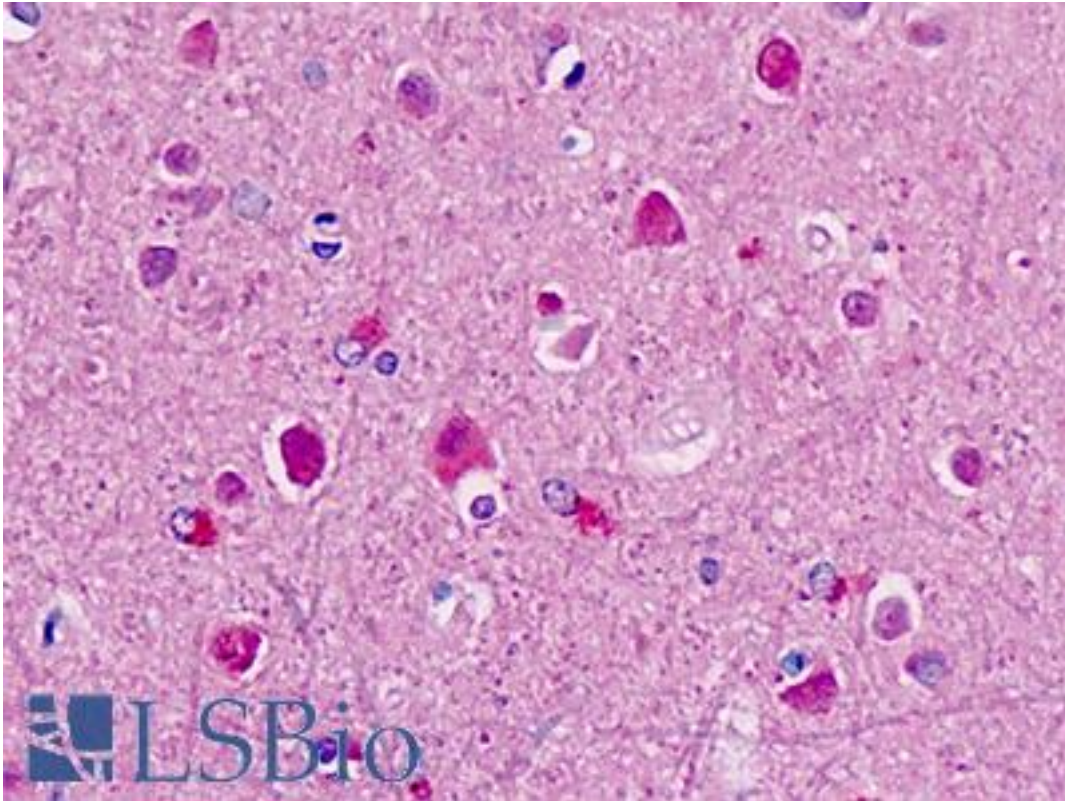


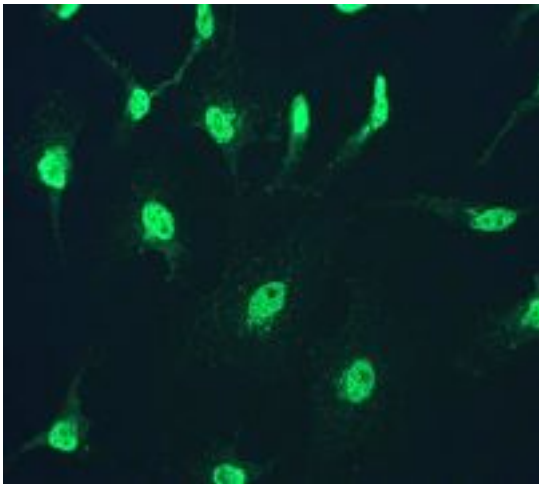
Cullin 1 / CUL1 Rabbit anti-Human Monoclonal (Internal) (EPR3102Y) Antibody - LS-B9302 - LSBio	
CatalogID:	LS-B9302
Validation:	This antibody replaces catalog number LS-C105392. It has been validated for use in the following assays: IHC-P.
Target:	cullin 1 (CUL1)
Synonyms:	CUL1 Antibody, Cullin 1 Antibody, Cullin-1 Antibody, CUL-1 Antibody
Host	CUL1 antibody was produced in Rabbit
Clonality:	Monoclonal
Isotype:	IgG
Clone Name:	EPR3102Y
Immunogen Species:	Cullin 1 / CUL1 antibody was raised against Human
Antigen Type:	Synthetic peptide
Immunogen:	Cullin 1 / CUL1 antibody was raised against a synthetic peptide corresponding to residues in human CUL1 was used as an immunogen.
Epitope:	Internal
Reactivity:	Human, Mouse, Rat
Purification:	Tissue culture supernatant
Presentation:	Tris-Glycine-NaCl or PBS, pH 7.2-7.4, 40-50% Glycerol, 0.01% sodium azide, 0.05% BSA
Recommended Storage:	Store at -20°C.
Uses:	IHC - Paraffin (1:50), ICC (1:100 - 1:250), Immunofluorescence, Western blot (1:1000 - 1:2000), Flow Cytometry (1:80) (Optimal dilution to be determined by the researcher)
Size:	50 µl

Immunohistochemistry Image:



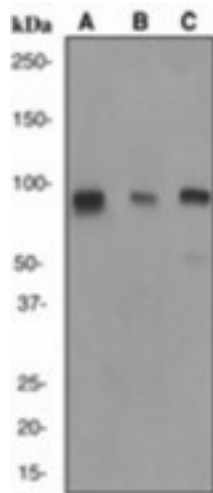
Human Brain, Neurons: Formalin-Fixed, Paraffin-Embedded (FFPE)

Immunofluorescence Image:



Immunofluorescent staining of HeLa cells using anti-CUL1 antibody.

Western Blot Image:



Western blot analysis on (A) 293T, (B) A549 and (C) T47D cell lysates using anti-CUL1 antibody, dilution 1:2000.

Requested From:

Japan

Laboratory Reagent For In Vitro Research Use Only

Not for resale without prior written consent from LifeSpan BioSciences, Inc.

Created on 9/24/2014

© 2014 LifeSpan BioSciences