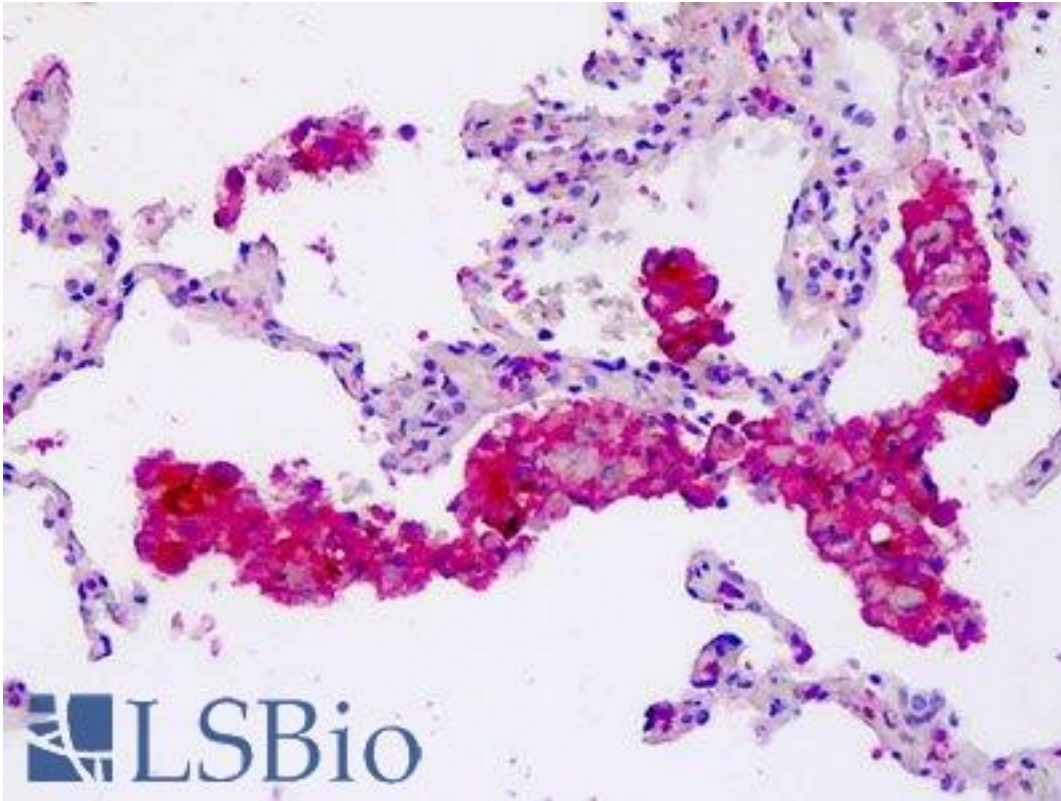


CORO6 Rabbit anti-Human Polyclonal (aa344-373) Antibody - LS-B9286 - LSBio

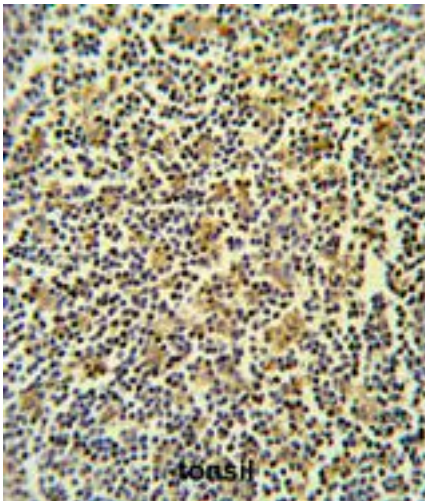
CatalogID:	LS-B9286
Validation:	This antibody replaces catalog number LS-C166956. It has been validated for use in the following assays: IHC-P.
Target:	Coronin 6 (CORO6)
Synonyms:	CORO6 Antibody, Clipin-E Antibody, Coronin-6 Antibody, Coronin 6 Antibody, Coronin-like protein E Antibody
Host	CORO6 antibody was produced in Rabbit
Clonality:	Polyclonal
Immunogen Species:	CORO6 antibody was raised against Human
Antigen Type:	Synthetic peptide
Immunogen:	CORO6 antibody was raised against kLH-conjugated synthetic peptide from C-terminal region of human CORO6.
Specificity:	Human CORO6
Epitope:	aa344-373
Reactivity:	Human, Mouse
Purification:	Immunoaffinity purified
Presentation:	PBS, 0.09% sodium azide
Recommended Storage:	Maintain refrigerated at 2-8°C for up to 6 months. For long term storage store at -20°C.
Uses:	IHC - Paraffin (5 µg/ml), Western blot (1:1000) (Optimal dilution to be determined by the researcher)
Size:	200 µl

Immunohistochemistry Image:



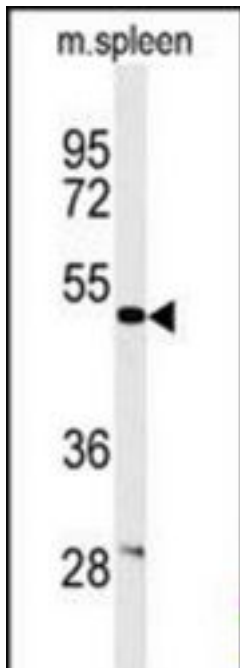
Human Lung, Macrophages: Formalin-Fixed, Paraffin-Embedded (FFPE)

Immunohistochemistry Image:



CORO6 Antibody (C-term) IHC of formalin fixed and paraffin embedded lymph carcinoma followed by peroxidase conjugation of the secondary antibody and DAB staining. This demonstrates the use of the CORO6 Antibody (C-term) for immunohistochemistry.

Western Blot Image:



Western blot of CORO6 Antibody (C-term) in mouse spleen tissue lysates (35 ug/lane). CORO6 (arrow) was detected using the purified Pab.

Requested From:

Japan

Laboratory Reagent For In Vitro Research Use Only

Not for resale without prior written consent from LifeSpan BioSciences, Inc.

Created on 9/24/2014

© 2014 LifeSpan BioSciences