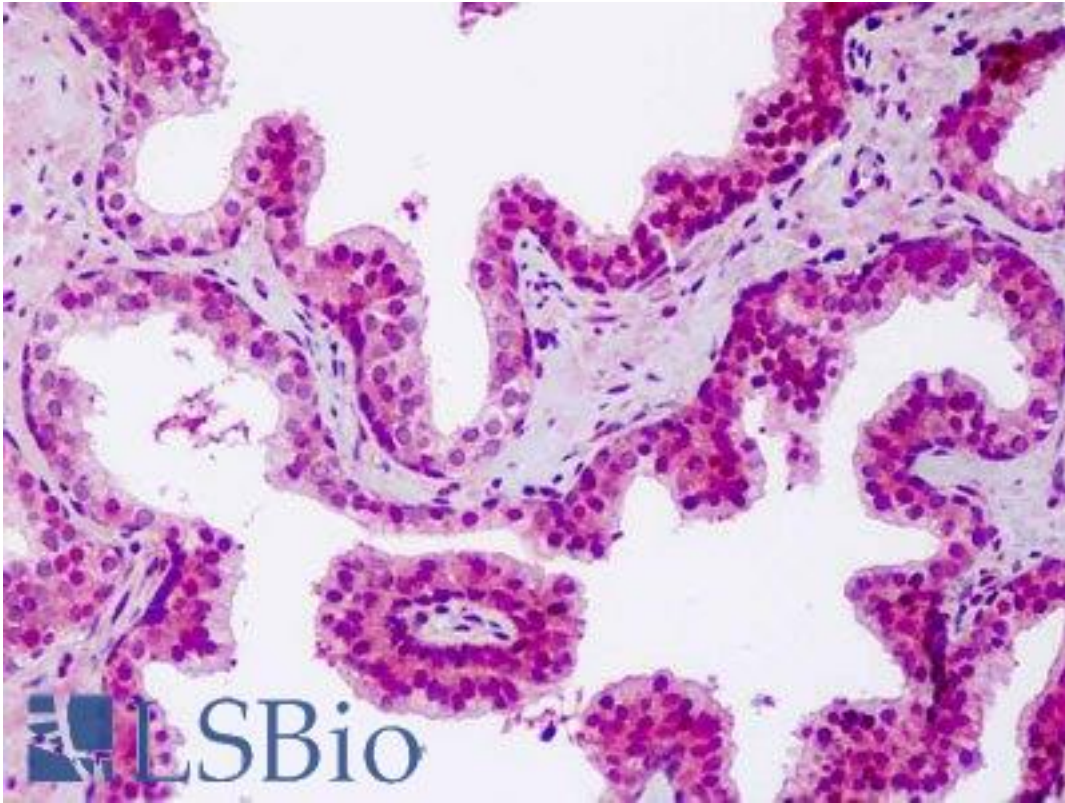


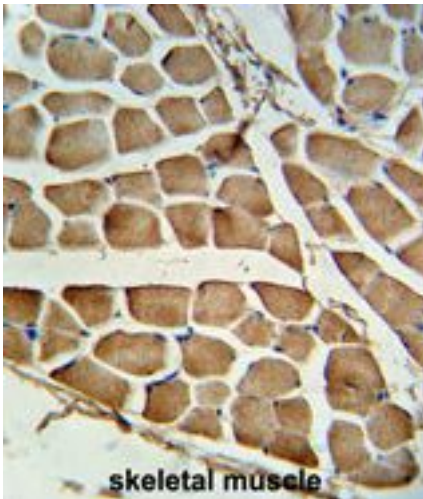
NOD1 Rabbit anti-Human Polyclonal (aa924-953) Antibody - LS-B9283 - LSBio	
CatalogID:	LS-B9283
Validation:	This antibody replaces catalog number LS-C168312. It has been validated for use in the following assays: IHC-P.
Target:	nucleotide-binding oligomerization domain containing 1 (NOD1)
Synonyms:	NOD1 Antibody, CARD4 Antibody, CLR7.1 Antibody, NLRC1 Antibody
Host	NOD1 antibody was produced in Rabbit
Clonality:	Polyclonal
Immunogen Species:	NOD1 antibody was raised against Human
Antigen Type:	Synthetic peptide
Immunogen:	NOD1 antibody was raised against kLH-conjugated synthetic peptide from C-terminal region of human CARD4.
Specificity:	Human NOD1
Epitope:	aa924-953
Reactivity:	Human
Purification:	Immunoaffinity purified
Presentation:	PBS, 0.09% sodium azide
Recommended Storage:	Maintain refrigerated at 2-8°C for up to 6 months. For long term storage store at -20°C.
Uses:	IHC - Paraffin (5 µg/ml), Western blot (1:1000), Flow Cytometry (1:10 - 1:50) (Optimal dilution to be determined by the researcher)
Size:	200 µl

Immunohistochemistry Image:



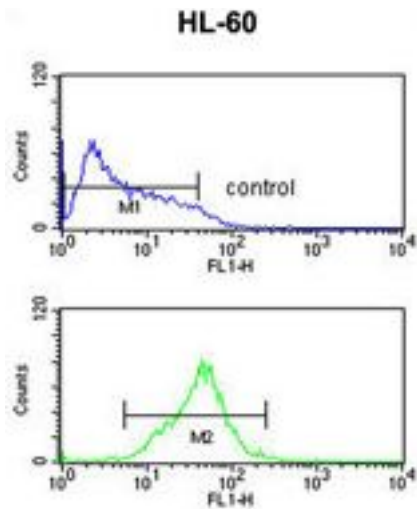
Human Prostate: Formalin-Fixed, Paraffin-Embedded (FFPE)

Immunohistochemistry Image:



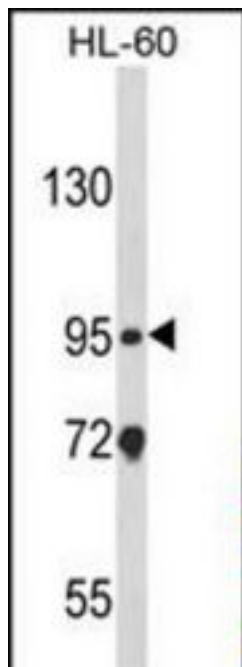
Formalin-fixed and paraffin-embedded human skeletal muscle tissue reacted with CARD4 Antibody (C-term), which was peroxidase-conjugated to the secondary antibody, followed by DAB staining.

Flow Cytometry Image:



NOD1 Antibody (C-term) flow cytometry of HL-60 cells (bottom histogram) compared to a negative control cell (top histogram). FITC-conjugated goat-anti-rabbit secondary antibodies were used for the analysis.

Western Blot Image:



Western blot of NOD1 Antibody (C-term) in HL-60 cell line lysates (35 ug/lane). NOD1 (arrow) was detected using the purified Pab.

Requested From:

Japan

Laboratory Reagent For In Vitro Research Use Only

Not for resale without prior written consent from LifeSpan BioSciences, Inc.

Created on 9/24/2014

© 2014 LifeSpan BioSciences