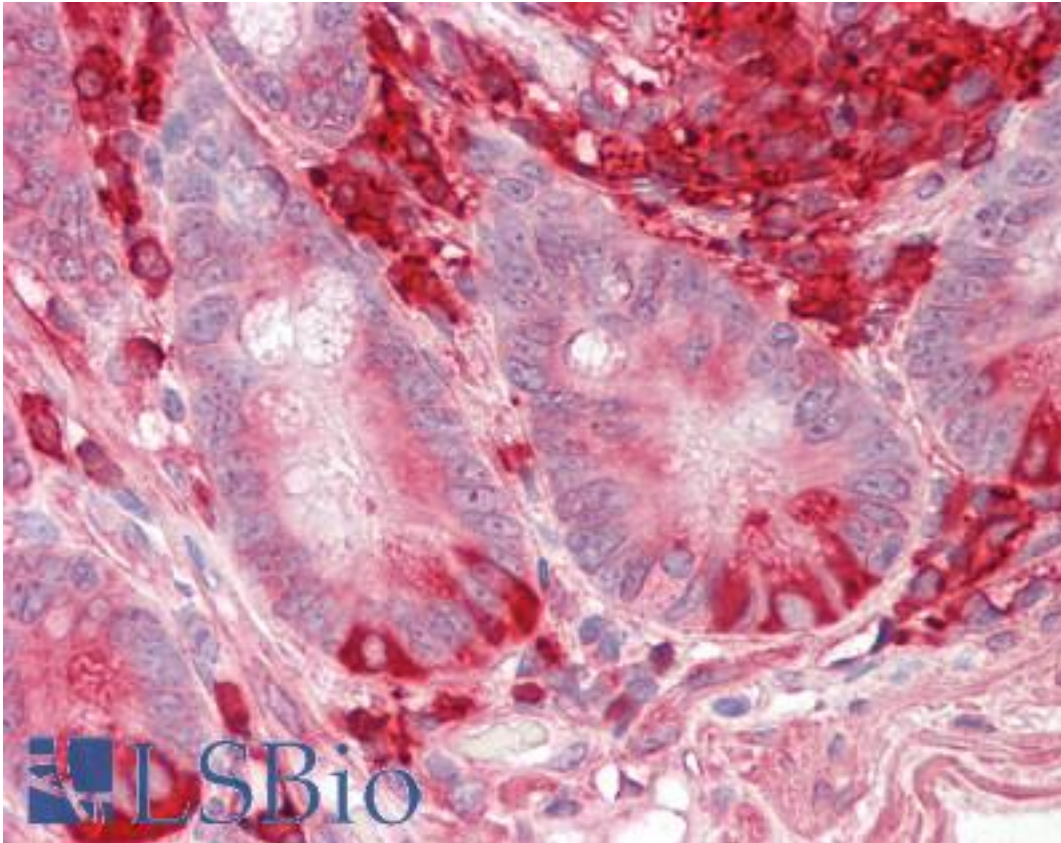


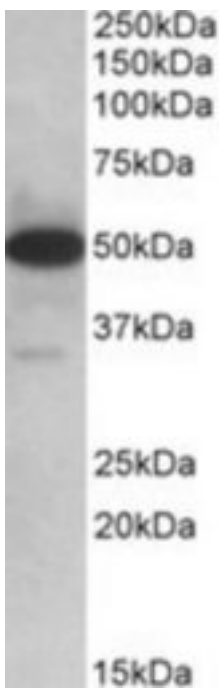
TXNDC5 / ERP46 Goat anti-Human Polyclonal (Internal) Antibody - LS-B9233 - LSBio	
<b>CatalogID:</b>	LS-B9233
<b>Validation:</b>	This antibody replaces catalog number LS-C139794. It has been validated for use in the following assays: IHC-P.
<b>Target:</b>	thioredoxin domain containing 5 (endoplasmic reticulum) (TXNDC5)
<b>Synonyms:</b>	TXNDC5 Antibody, ENDOPDI Antibody, ER protein 46 Antibody, ERP46 Antibody, PDIA15 Antibody, STRF8 Antibody, TLP46 Antibody, UNQ364 Antibody, HCC-2 Antibody, Thioredoxin related protein Antibody, Thioredoxin-like protein p46 Antibody
<b>Host</b>	TXNDC5 antibody was produced in Goat
<b>Clonality:</b>	Polyclonal
<b>Immunogen Species:</b>	TXNDC5 / ERP46 antibody was raised against Human
<b>Antigen Type:</b>	Synthetic peptide
<b>Immunogen:</b>	TXNDC5 / ERP46 antibody was raised against synthetic peptide C-RDLESLREYVESQLQ from an internal region of human TXNDC5 (NP_110437.2; NP_001139021.1). Percent identity by BLAST analysis: Human, Gorilla, Marmoset, Elephant, Panda (100%); Gibbon, Monkey, Dog (93%); Mouse, Rat, Hamster, Bat, Bovine, Rabbit, Horse (87%); Pig, Opossum (80%).
<b>Specificity:</b>	Human TXNDC5. This antibody is expected to recognize both reported isoforms (NP_110437.2; NP_001139021.1).
<b>Epitope:</b>	Internal
<b>Reactivity:</b>	Human, Gorilla, Mouse
<b>Predicted Reactivity:</b>	Gibbon, Monkey, Dog
<b>Purification:</b>	Immunoaffinity purified
<b>Presentation:</b>	Tris-buffered saline, pH 7.3, 0.5% BSA, 0.02% sodium azide
<b>Recommended Storage:</b>	Store at -20°C. Minimize freezing and thawing.
<b>Usage Summary:</b>	Peptide ELISA: antibody detection limit dilution 1:16000. Western blot: Approx 50kD plus faint 35kD bands observed in Human Lymph Nodes lysates (calculated MW of 47.6kD according to NP_110437.2) and of 36.2kD according to NP_001139021.1. Recommended concentration: 0.1-0.3 ug/ml.
<b>Uses:</b>	IHC - Paraffin (3.75 µg/ml), Western blot (0.1 - 0.3 µg/ml), ELISA (1:16000) (Optimal dilution to be determined by the researcher)
<b>Size:</b>	50 µg
<b>Concentration:</b>	0.5 mg/ml

**Immunohistochemistry Image:**



Human Small Intestine: Formalin-Fixed, Paraffin-Embedded (FFPE)

**Western Blot Image:**



TXNDC5 antibody (0.1 ug/ml) staining of Human Lymph Nodes lysate (35 ug protein/ml in RIPA buffer). Primary incubation was 1 hour. Detected by chemiluminescence.

<b>Requested From:</b>	Japan
Laboratory Reagent For In Vitro Research Use Only	
Not for resale without prior written consent from LifeSpan BioSciences, Inc.	
Created on 9/24/2014	
© 2014 LifeSpan BioSciences	