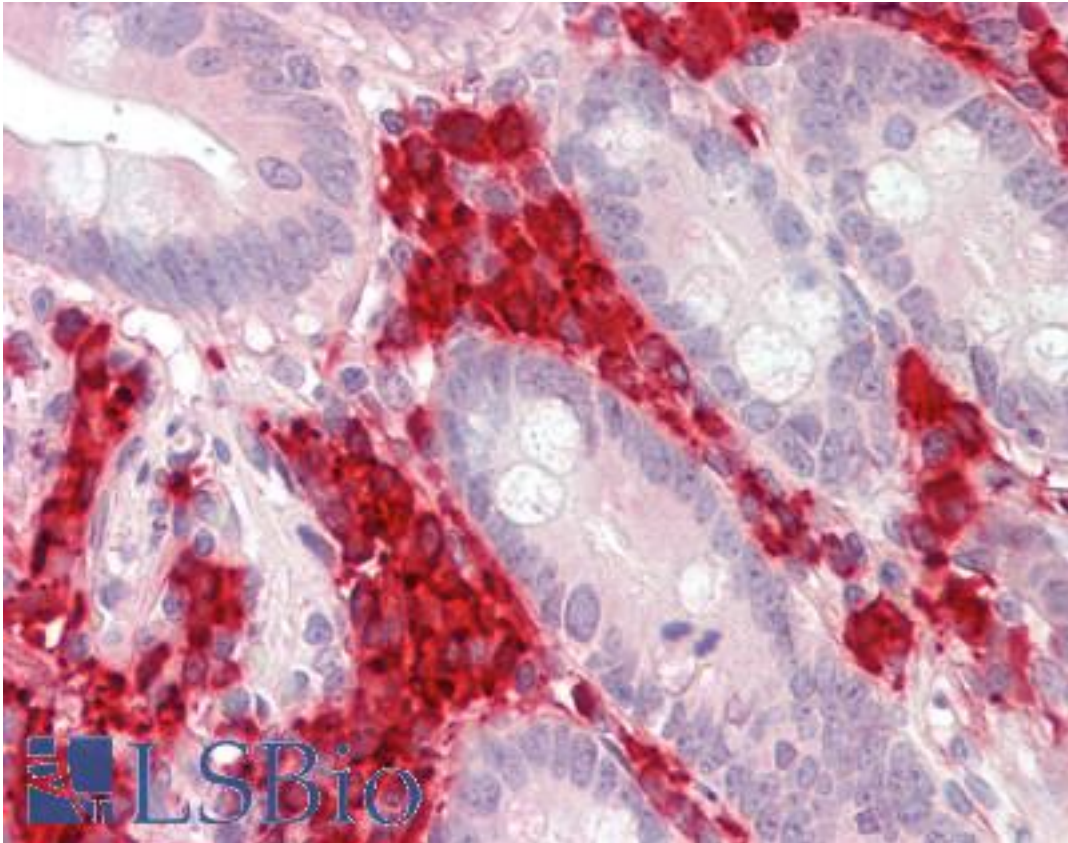


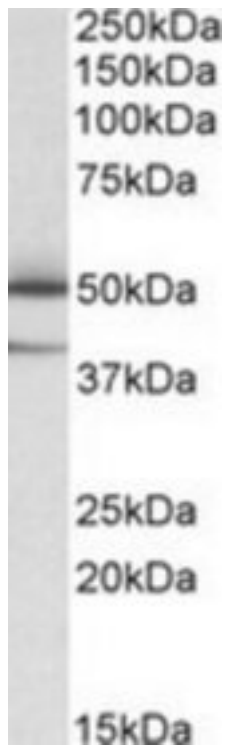
TXNDC5 / ERP46 Goat anti-Human Polyclonal (Internal) Antibody - LS-B9232 - LSBio	
CatalogID:	LS-B9232
Validation:	This antibody replaces catalog number LS-C139775. It has been validated for use in the following assays: IHC-P.
Target:	thioredoxin domain containing 5 (endoplasmic reticulum) (TXNDC5)
Synonyms:	TXNDC5 Antibody, ENDOPDI Antibody, ER protein 46 Antibody, ERP46 Antibody, PDIA15 Antibody, STRF8 Antibody, TLP46 Antibody, UNQ364 Antibody, HCC-2 Antibody, Thioredoxin related protein Antibody, Thioredoxin-like protein p46 Antibody
Host	TXNDC5 antibody was produced in Goat
Clonality:	Polyclonal
Immunogen Species:	TXNDC5 / ERP46 antibody was raised against Human
Antigen Type:	Synthetic peptide
Immunogen:	TXNDC5 / ERP46 antibody was raised against synthetic peptide C-RDGKKVDQYKGKRD from an internal region of human TXNDC5 (NP_110437.2; NP_001139021.1). Percent identity by BLAST analysis: Human, Gorilla, Gibbon, Monkey, Mouse, Rat, Hamster, Bovine, Rabbit (100%); Marmoset, Bat, Horse (93%); Panda, Dog, Xenopus (86%).
Specificity:	Human TXNDC5. This antibody is expected to recognize both reported isoforms (NP_110437.2; NP_001139021.1).
Epitope:	Internal
Reactivity:	Human, Gorilla, Gibbon, Mouse, Rat, Bovine, Hamster, Rabbit
Predicted Reactivity:	Monkey, Bat, Horse
Purification:	Immunoaffinity purified
Presentation:	Tris-buffered saline, pH 7.3, 0.5% BSA, 0.02% sodium azide
Recommended Storage:	Store at -20°C. Minimize freezing and thawing.
Usage Summary:	Peptide ELISA: antibody detection limit dilution 1:64000. Western blot: Approx 50+38kD bands observed in Human Lymph Nodes lysates (calculated MW of 47.6kD according to NP_110437.2 and of 36.2kD according to NP_001139021.1). Recommended concentration: 0.03-0.1 ug/ml.
Uses:	IHC - Paraffin (3.75 µg/ml), Western blot (0.03 - 0.1 µg/ml), ELISA (1:64000) (Optimal dilution to be determined by the researcher)
Size:	50 µg
Concentration:	0.5 mg/ml

Immunohistochemistry Image:



Human Small Intestine: Formalin-Fixed, Paraffin-Embedded (FFPE)

Western Blot Image:



TXNDC5 antibody (0.05 ug/ml) staining of Human Lymph Nodes lysate (35 ug protein/ml in RIPA buffer). Primary incubation was 1 hour. Detected by chemiluminescence.

Requested From:

Japan

Laboratory Reagent For In Vitro Research Use Only

Not for resale without prior written consent from LifeSpan BioSciences, Inc.

Created on 9/24/2014

© 2014 LifeSpan BioSciences