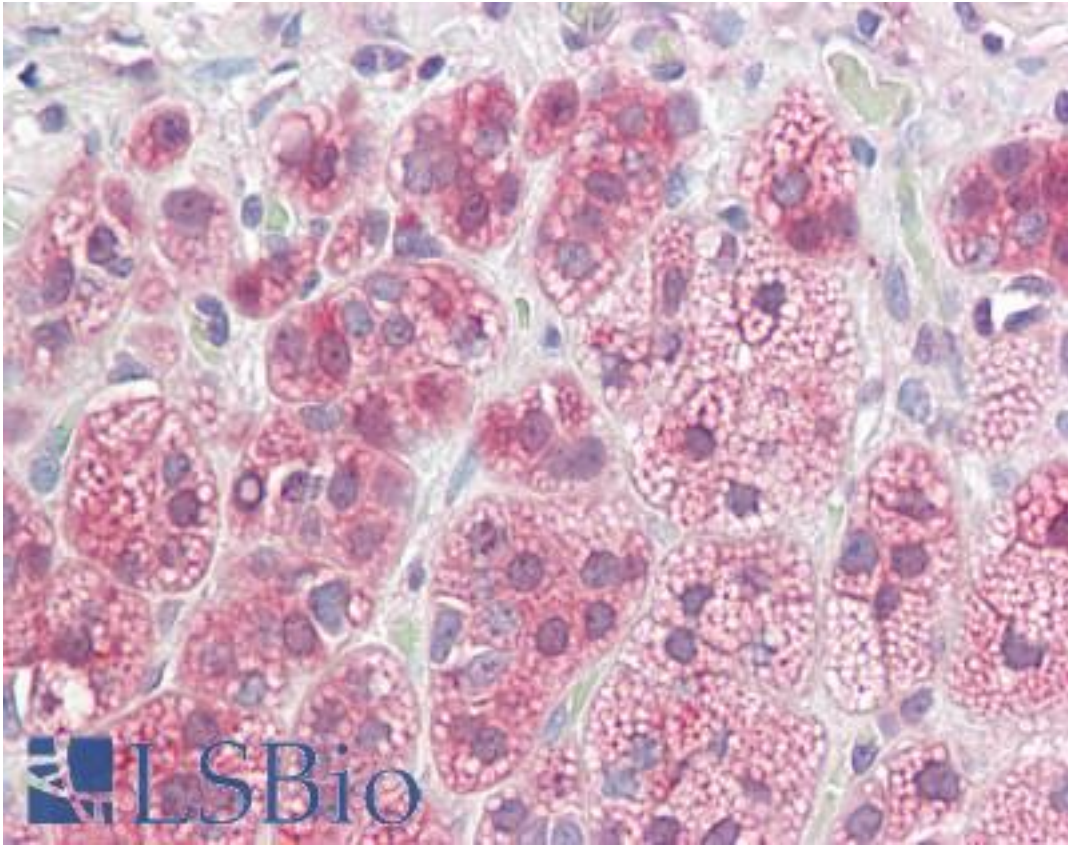


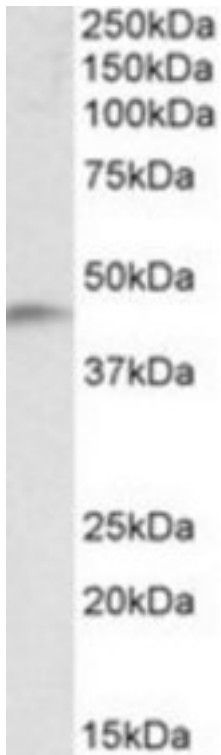
NDRG2 Goat anti-Human Polyclonal (N-Terminus) Antibody - LS-B9230 - LSBio	
CatalogID:	LS-B9230
Validation:	This antibody replaces catalog number LS-C139688. It has been validated for use in the following assays: IHC-P.
Target:	NDRG family member 2 (NDRG2)
Synonyms:	NDRG2 Antibody, KIAA1248 Antibody, N-myc downstream regulator 2 Antibody, NDRG family member 2 Antibody, SYLD Antibody, NDR1-related protein NDR2 Antibody, Protein Syld709613 Antibody, Syld709613 protein Antibody, Cytoplasmic protein Ndr1 Antibody, Protein NDRG2 Antibody
Host	NDRG2 antibody was produced in Goat
Clonality:	Polyclonal
Immunogen Species:	NDRG2 antibody was raised against Human
Antigen Type:	Synthetic peptide
Immunogen:	NDRG2 antibody was raised against synthetic peptide KEAELAARILLDQQG-C from the N-terminus (near) of human NDRG2 (NP_963293.1). Percent identity by BLAST analysis: Human, Gorilla, Orangutan, Gibbon, Marmoset, Mouse, Rat, Hamster, Horse, Rabbit, Platypus (100%); Monkey, Panda, Bat, Stickleback, Pufferfish (93%); Zebrafish (87%); Opossum (80%).
Specificity:	Human NDRG2. This antibody is expected to recognize reported isoform a (NP_963293.1) only. Reported variants represent identical protein: NP_963831.1, NP_963293.1, NP_963834.1, NP_963833.1.
Epitope:	N-Terminus
Reactivity:	Human, Gorilla, Orangutan, Gibbon, Mouse, Rat, Hamster, Horse, Rabbit
Predicted Reactivity:	Monkey, Bat
Purification:	Immunoaffinity purified
Presentation:	Tris-buffered saline, pH 7.3, 0.5% BSA, 0.02% sodium azide
Recommended Storage:	Store at -20°C. Minimize freezing and thawing.
Usage Summary:	Peptide ELISA: antibody detection limit dilution 1:16000. Western blot: Approx 45kD band observed in Human Brain (Temporal Cortex), Mouse and Rat Brain lysates (calculated MW of 40.8kD according to NP_963293.1). Recommended concentration: 0.1-0.3 ug/ml.
Uses:	IHC - Paraffin (3.75 µg/ml), Western blot (0.1 - 0.3 µg/ml), ELISA (1:16000) (Optimal dilution to be determined by the researcher)
Size:	50 µg
Concentration:	0.5 mg/ml

Immunohistochemistry Image:



Human Adrenal: Formalin-Fixed, Paraffin-Embedded (FFPE)

Western Blot Image:



NDRG2 antibody (0.1 ug/ml) staining of Human Temporal Cortex lysate (35 ug protein/ml in RIPA buffer). Primary incubation was 1 hour. Detected by chemiluminescence.

Requested From:

Japan

Laboratory Reagent For In Vitro Research Use Only

Not for resale without prior written consent from LifeSpan BioSciences, Inc.

Created on 9/24/2014

© 2014 LifeSpan BioSciences